

LCS-R Net International Research Network for Low Carbon Societies

International Research Network for Low Carbon Societies

LCS-RNet

Stakeholders Dialogue on Low Carbon Societies
at ISAP 2009
26 June
Shuzo Nishioka

International Research Network for Low Carbon Societies

LCS-R Net International Research Network for Low Carbon Societies

Background

At G8 Environment Ministers Meeting, May 2008, Kobe, Japan Strong support to set-up a Low Carbon Society International Research Network (LCS-RNet) was expressed.

[To realize such long-term goals towards LCS], it is **necessary to change the current socio-economic structures** and transition to low-carbon societies. In so doing, there was general recognition of the importance of **all the countries to have a clear vision of their own low-carbon societies.** *[Kobe EMM Chair's Summary]*

International Research Network for Low Carbon Societies

2

International Research Network for Low Carbon Societies

LCS-RNet

Objectives of LCS-RNet

- Promote information exchange and research cooperation that covers various issues relating to low carbon societies (LCS).
- Promote understanding of LCS dialogues between researchers and various stakeholders including policy-makers, businesses, citizens, and others to share national and sub-national visions on low carbon societies.
- Contribute to international policy-making processes on climate change such as G8 and other high level policy processes by providing research outcomes and recommendations.

3

International Research Network for Low Carbon Societies

International Research Network for Low Carbon Societies

LCS-RNet

Why Networking?

LCS Research is:

- relatively new research field -
- a number of issues require research collaboration among researchers with different disciplines.

That require;

- Integration of science and technology, society, and policy,
- Have the overview of the state of LCS research
- Better understanding of LCS among various stakeholders, and
- Linkage between LCS research and policy-making processes to provide science based information

Nature of LCS-RNet

- Platform for research on low carbon society.
- Non-binding network

- Lessons to be learned from each other for common approaches.
- Various definitions, different pathways to achieve LCS

International Research Network for Low Carbon Societies

International Research Network for Low Carbon Societies

LCS-RNet

2009 – under Italian G8 presidency

Researchers Meeting in Trieste, 1-2 April

- Hosted by the Government of Italy
- 23 participants from 8 countries
- Research areas/themes identified
- Discussed the strategic planning of its activities for the next 5 years.

LCS Session at G8 High Level Forum In Trieste, 5 April

- Officially announce the launch of the LCS-RNet

The G8 Ministers and senior officials supported the innovative nature of the LCS-RNet, and requested to report back its outcomes periodically.

G8 EMM in Siracusa, 22-24 April

1st Annual Meeting in Bologna, 12-13 October & 1st Steering Group Meeting

- Bologna, Italy
- 12-13 October 2009
- Hosted by Italy with the support of Ministry of Environment, Land and Sea

2010 – under Canadian G8 presidency Meeting on LCS in Germany - TBD

Stakeholder Dialogue on LCS at ISAP organised by IGES Workshops in Asia by IGES, etc

5

International Research Network for Low Carbon Societies

International Research Network for Low Carbon Societies

LCS-RNet

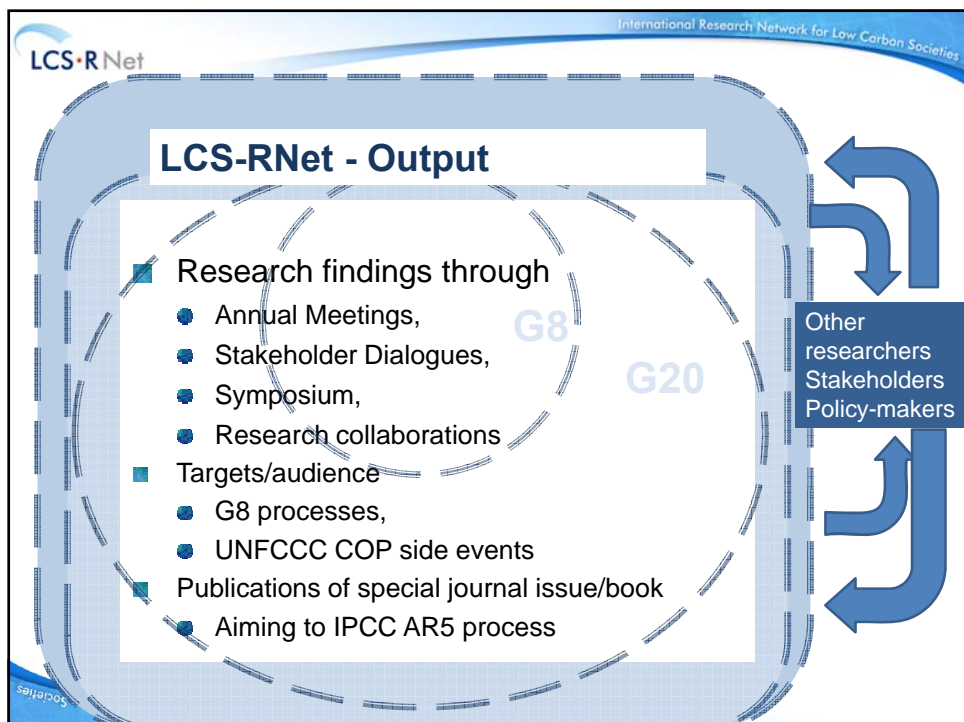
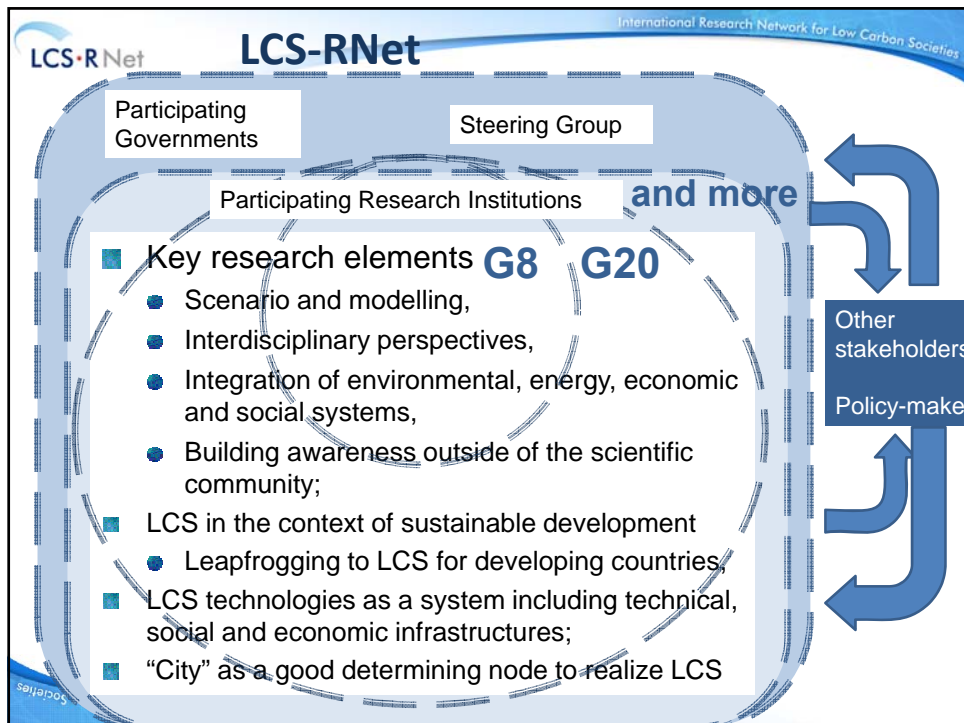
Participating Institutions with Government Contact Points

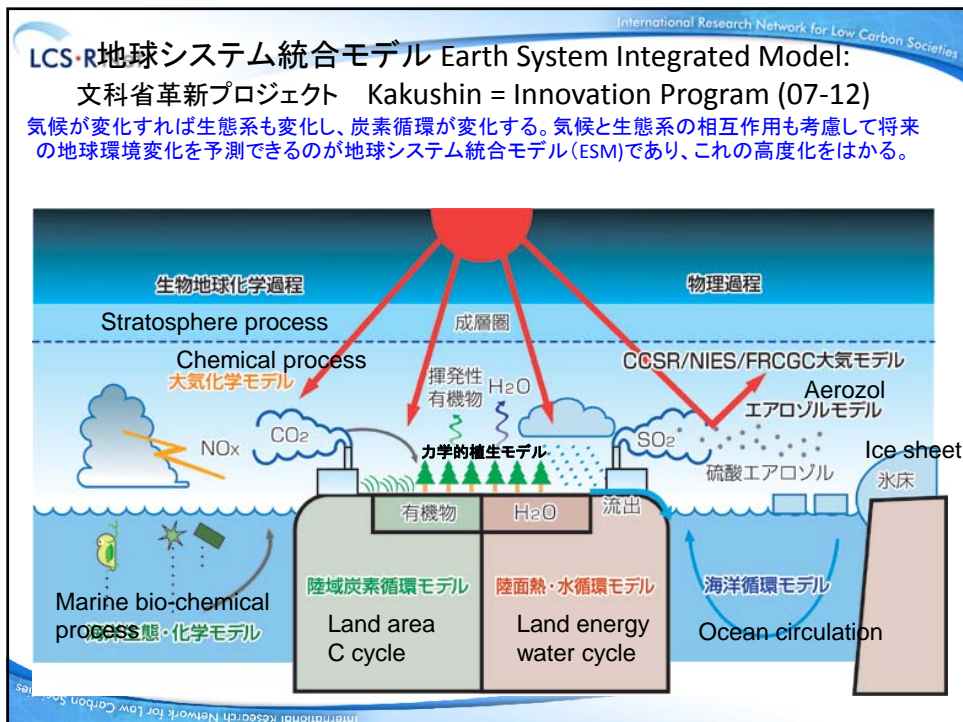
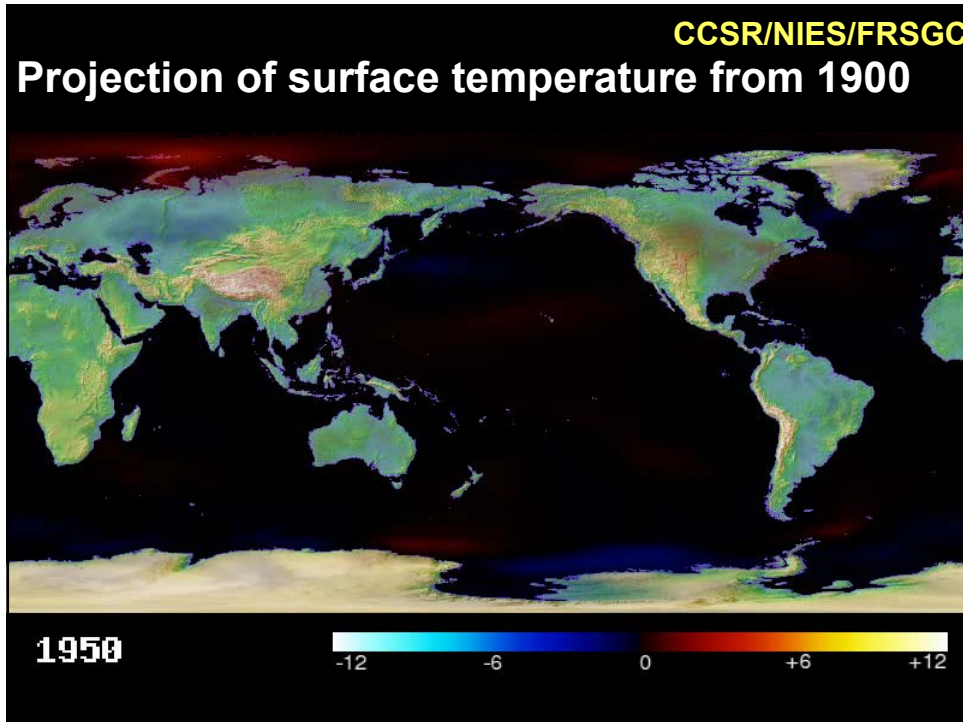
(as of A May 2009)

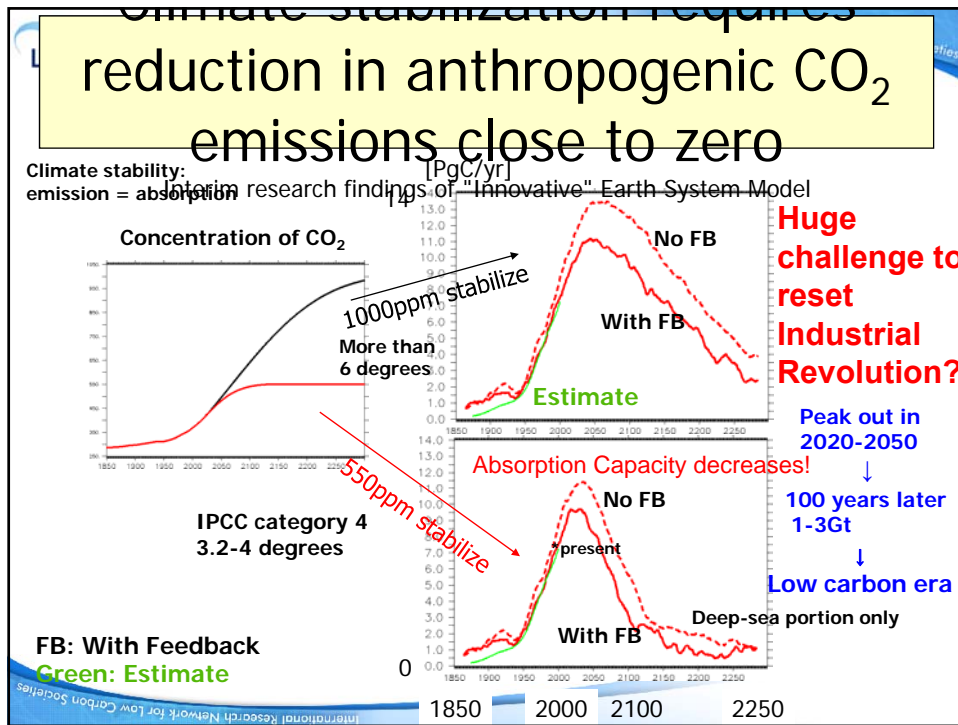
Academy of Technology		France
French Environment and Energy Management Agency	ADEME	
Institute for Sustainable Development and International Relations	IDDR	
Wuppertal Institute for Climate, Environment and Energy		Germany
Euro-Mediterranean Center on Climate Change	CMCC	Italy
Italian National Agency for New Technologies, Energy and the Environment	ENEA	
Institute for Global Environmental Strategies	IGES	Japan
National Institute for Environmental Studies	NIES	
National Institute of Environmental Research	NIER	Korea
UK Energy Research Centre	UKERC	UK

6

International Research Network for Low Carbon Societies







International Research Network for Low Carbon Societies

Sharing innovative nature of approach to LCS

LCS-R Net 2050 Low Carbon Society, Japan

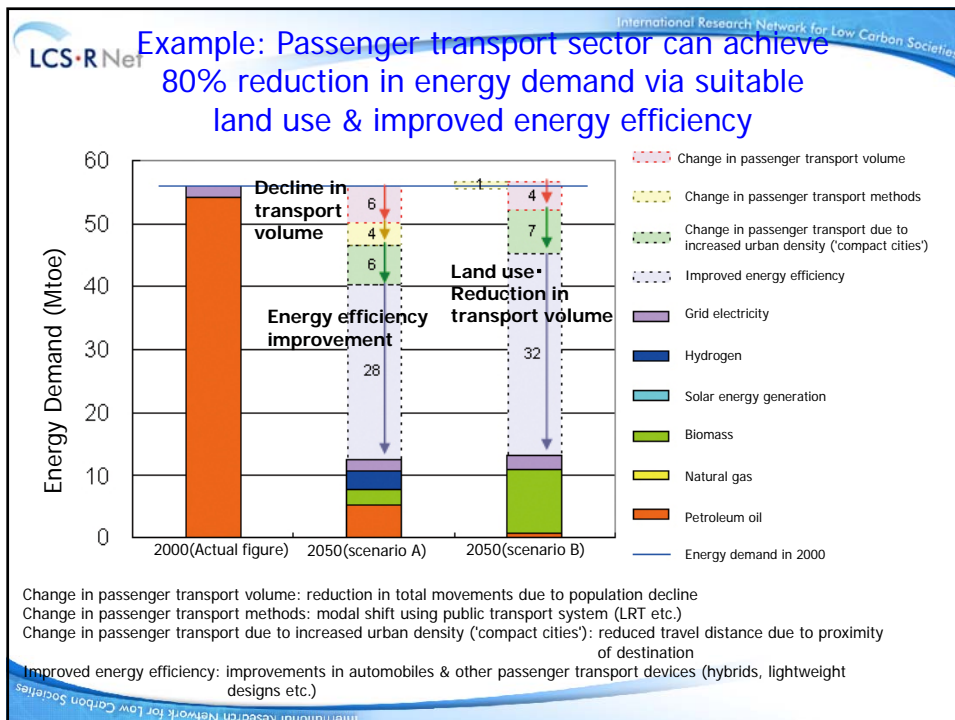
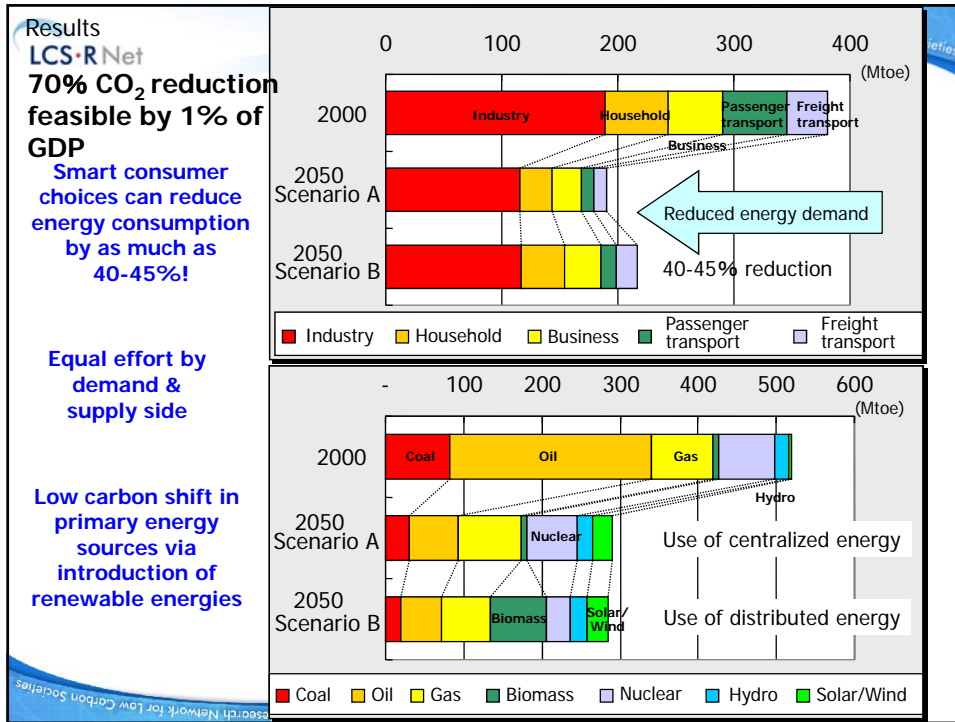
A research result to endorse Japanese policy of 60-80% reduction in 2050

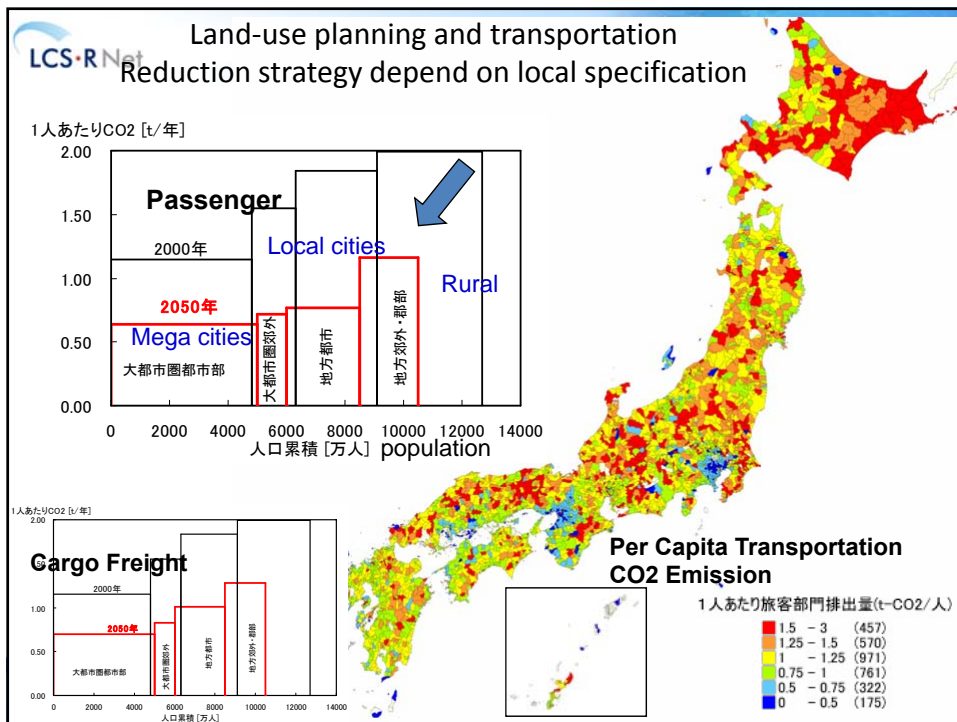
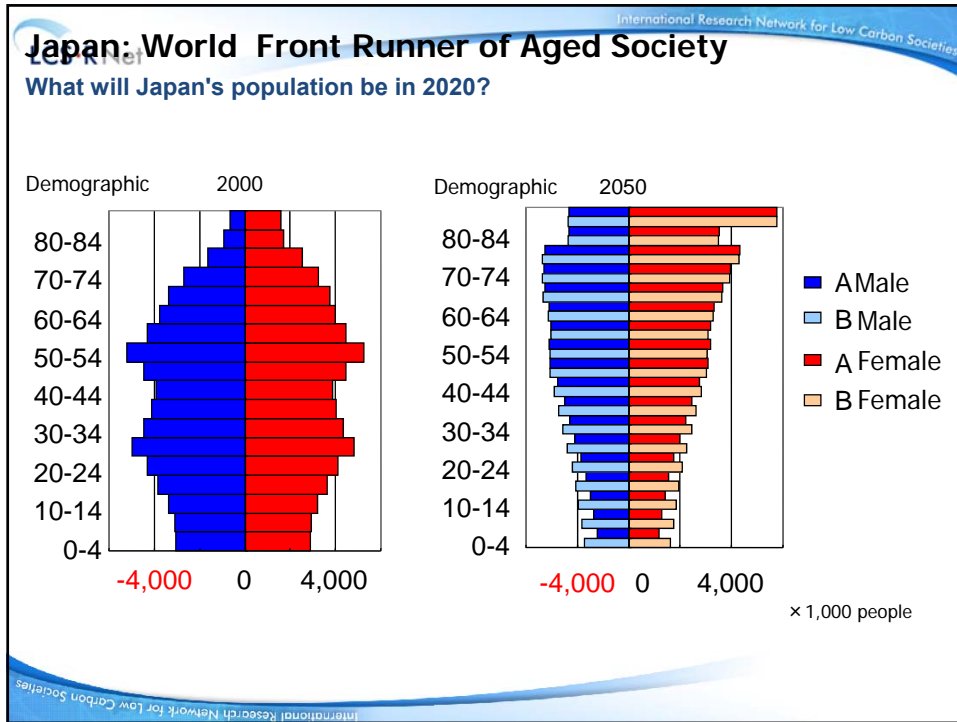
Key conclusion:
Japan has the technological potential to reduce its CO₂ emission by 70% compared to the 1990 level, while satisfying the expected demand for energy services in 2050.

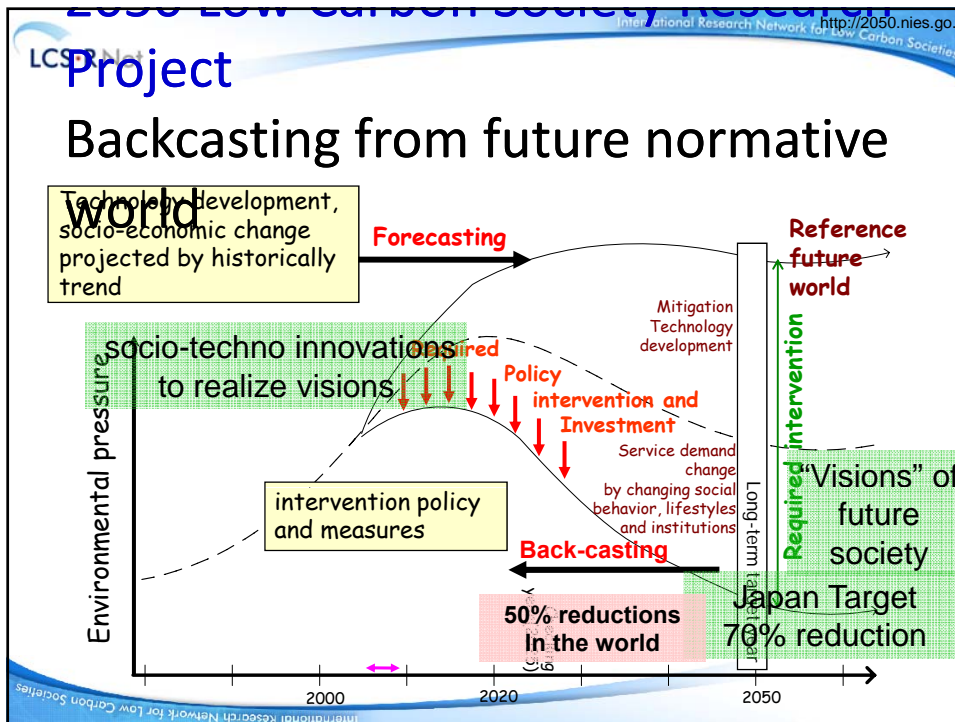
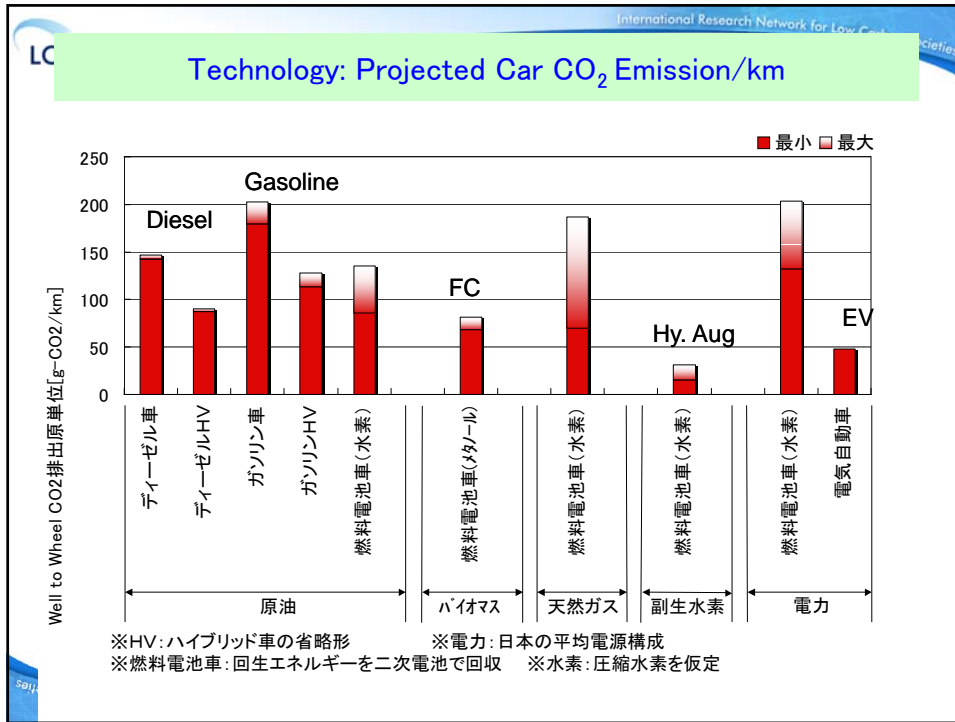
Innovation necessary in technological/industrial/social infrastructure policy

Prime Minister Fukuda in Congress (Jan. 2008) "...maximize Japanese environmental power, lead world transition towards Low Carbon Society..."
(May 18) Japanese long-term target 60-80% reduction until 2050,

International Research Network for Low Carbon Societies


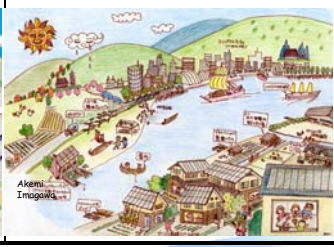








Two different but likely future societies

Vision A "Doraemon"	Vision B "Satsuki and Mei"
Vivid, Technology-driven	Slow, Natural-oriented
Urban/Personal	Decentralized/Community
Technology breakthrough Centralized production /recycle	Self-sufficient Produce locally, consume locally
Comfortable and Convenient	Social and Cultural Values
2%/Cap/year GDP growth	1%/Cap/year GDP growth

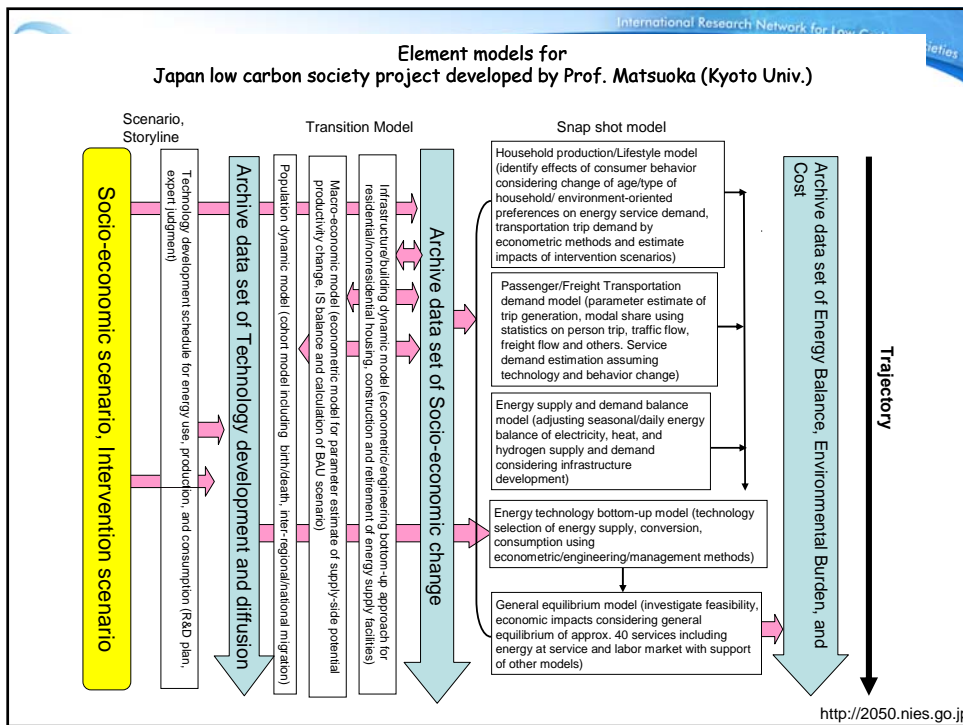


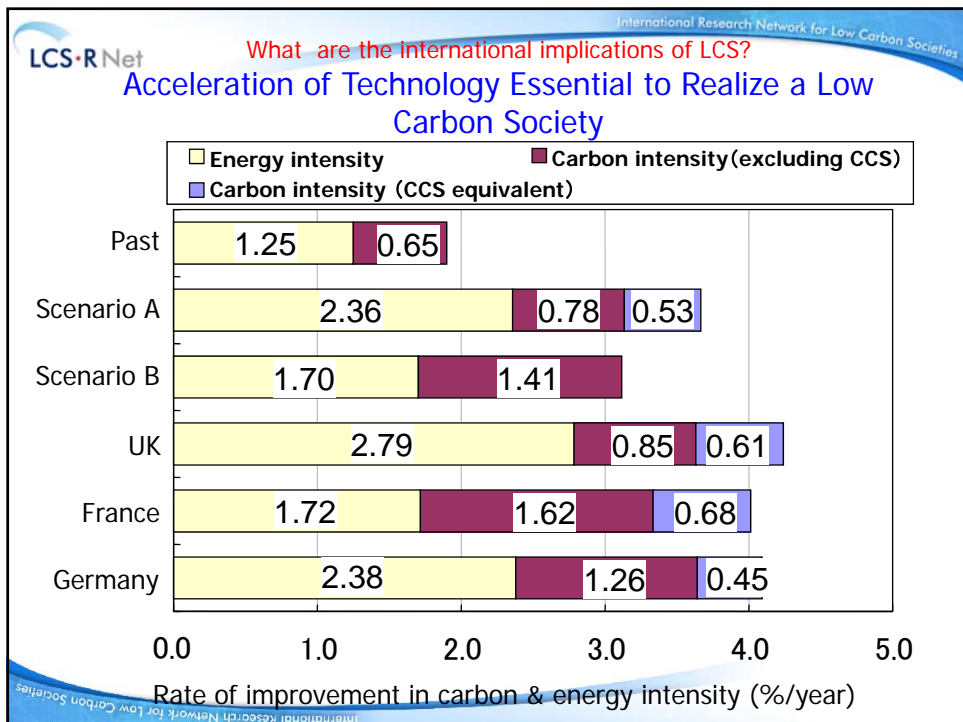
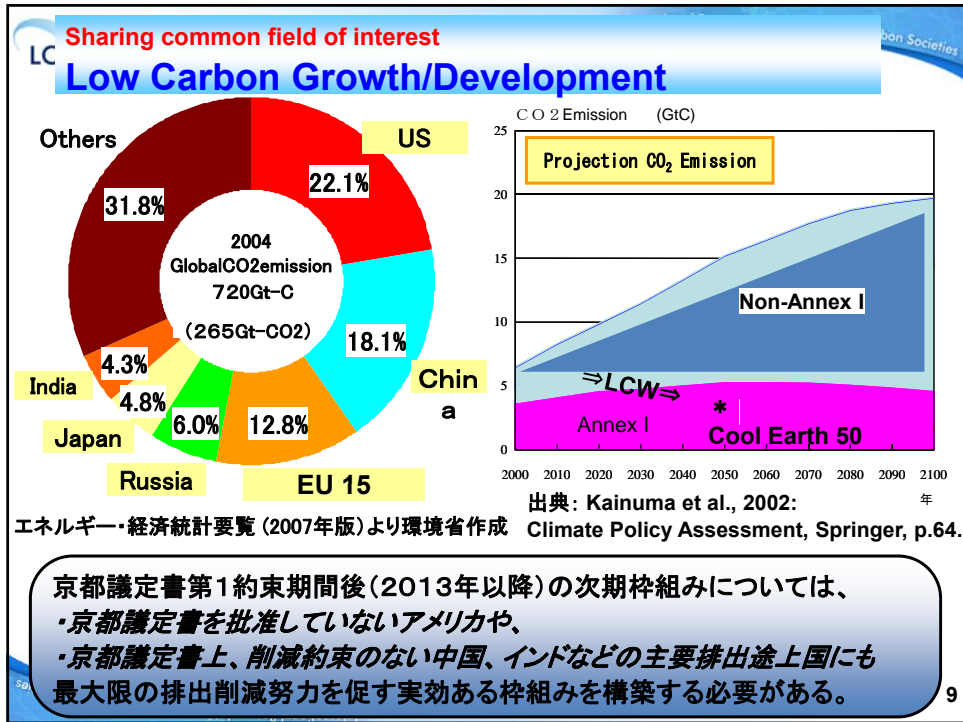
Doraemon is a Japanese comic series created by Fujiko F. Fujio. The series is about a robotic cat named Doraemon, who travels back in time from the 22nd century. He has a pocket, which connects to the fourth dimension and acts like a wormhole.

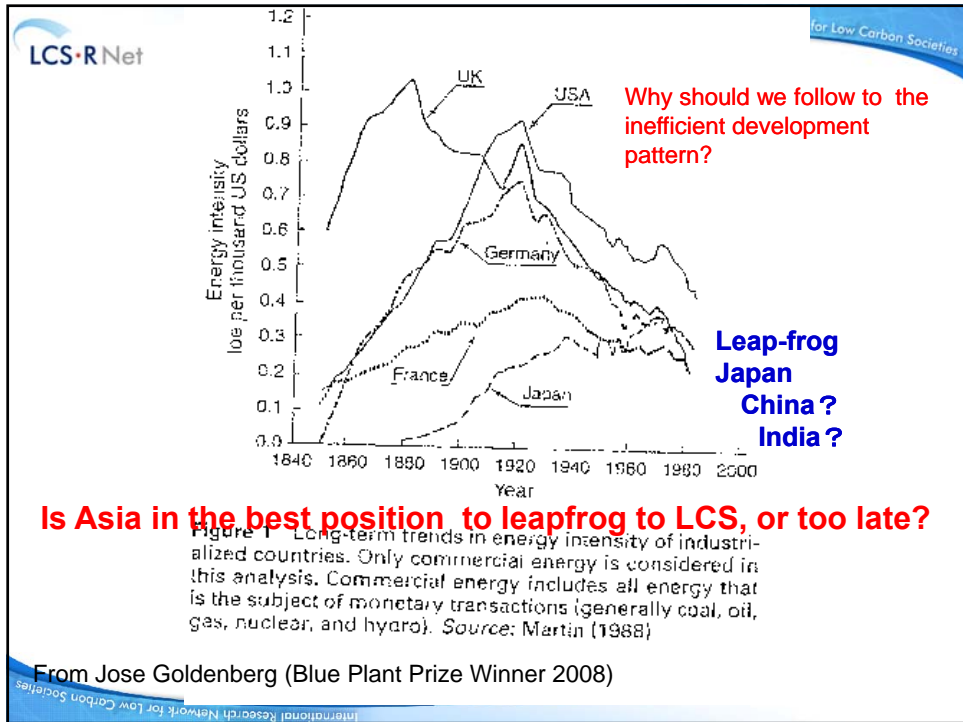
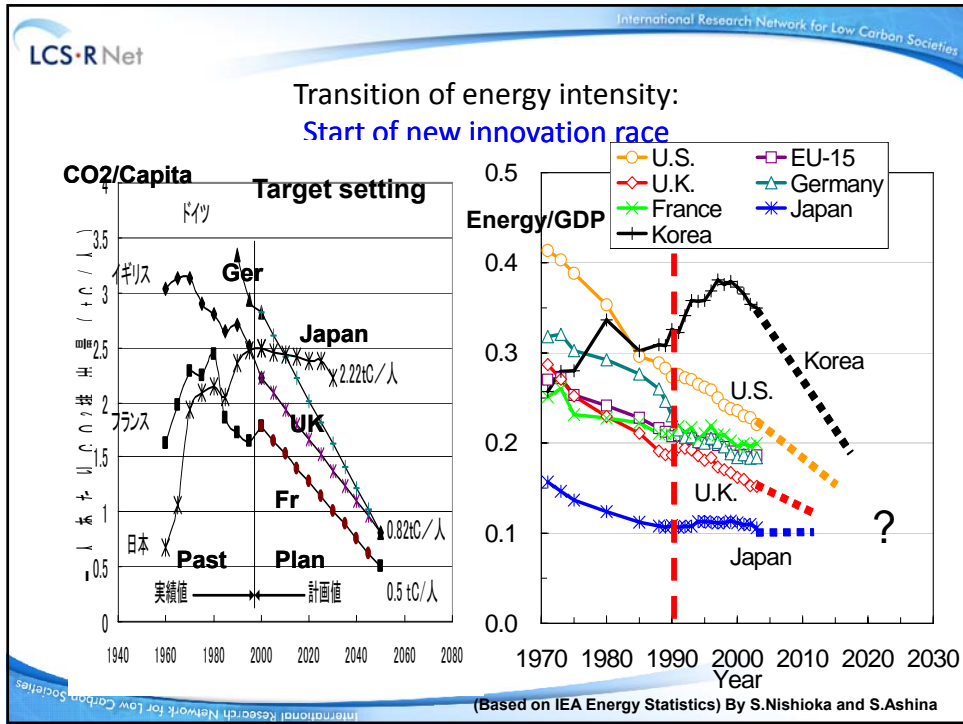


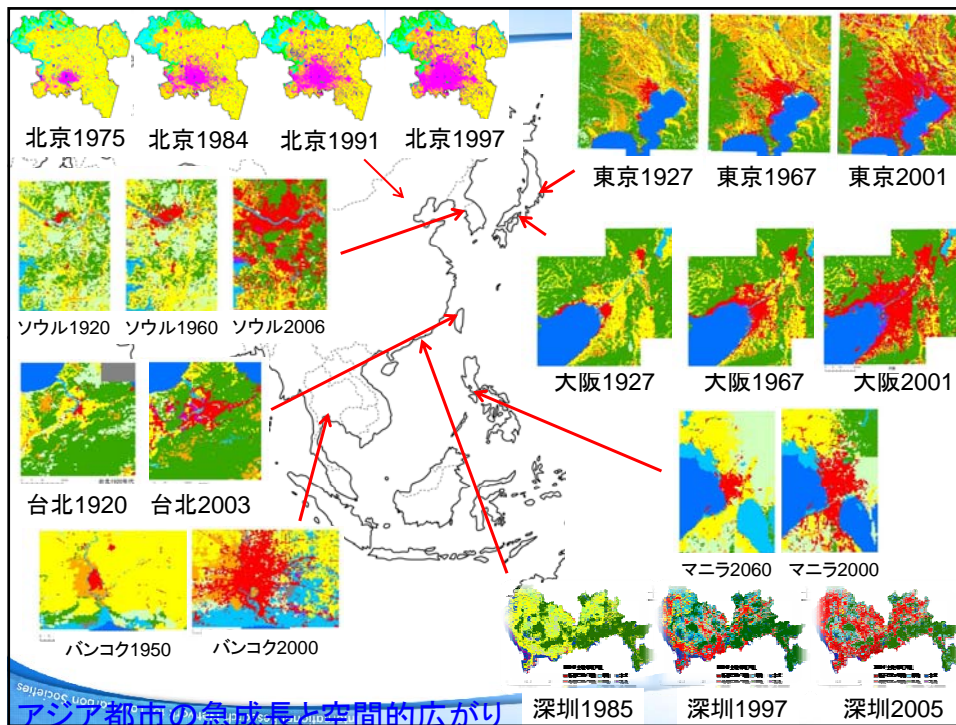
Satsuki and Mei's House reproduced in the 2005 World Expo. Satsuki and Mei are daughters in the film "My Neighbor Totoro". They lived in an old house in rural Japan, near which many curious and magical creatures inhabited.

<http://2050.nies.go.jp>









LCS-R Net International Research Network for Low Carbon Societies

Are many of the Asian Countries in a good position to leapfrog to LCS, or too late?

- Rapid growing stage
- Plenty of human resources/ infrastructure/ technology
- Current pressure: energy, climate, globalization to LCS

Cooperative opportunity for T.T

