



**On the ground Experience of Community Forestry  
and  
Integrating SEPLs in the NBSAPs :  
Nepalese Perspective**

*Krishna C. Paudel  
Secretary, Government of Nepal  
Eastern Regional Administrative Office  
Dhankuta*

**ISAP 2012, Yokohama**



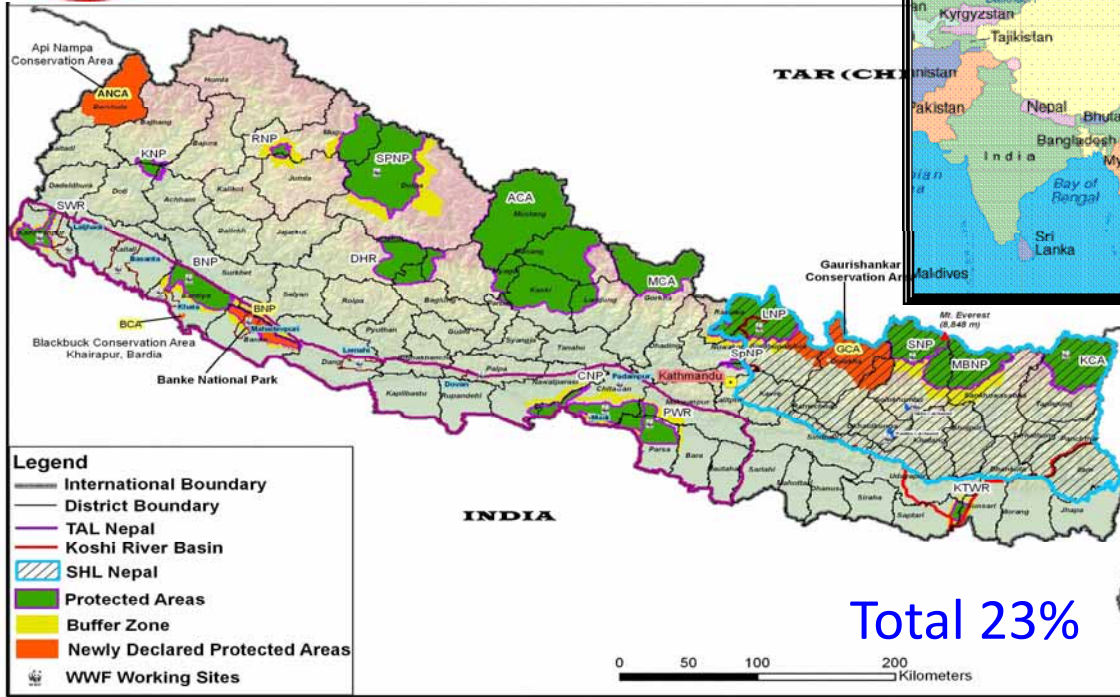
**content**



1. Introduction
2. CF Policy, Legislation and Process
3. Achievements
4. Impacts
5. Integration of SEPLs in the National Policies
6. Conclusion



# 1. Introduction



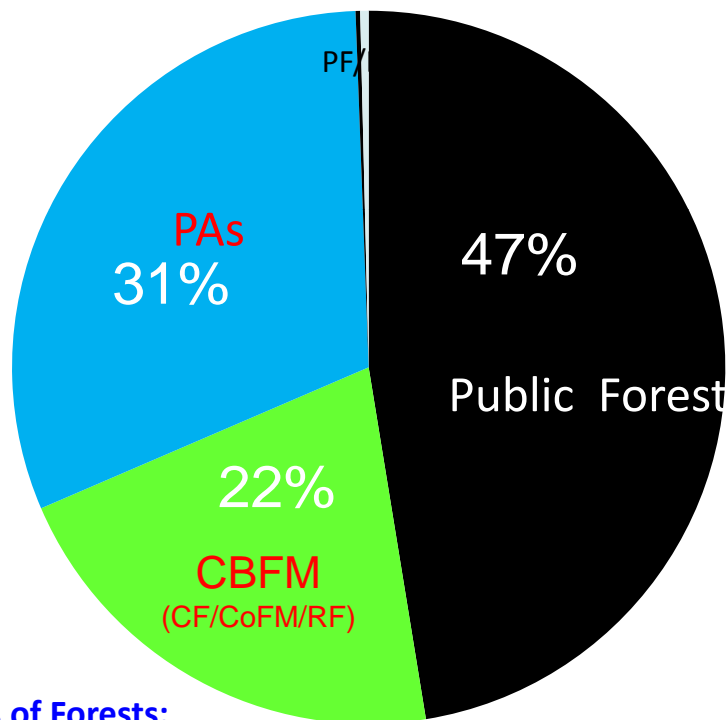
26 million people in 147, 181 KM<sup>2</sup> Area, approx. 70% are farmers. Forest occupies 39.6% while agriculture 21%.



## Forestry problems continue



## Different forest Management Regimes



5 categories of Forests:

National forest, Community Forest, Leased forest,, Religious forest, and Private forest



### History of forest management:

- ◆ Forest nationalization Act 1957
- ◆ Forest Act 1961
- ◆ National Forestry Plan 1976
- ◆ Inception of Community Forestry Rules 1978



## ***History of forest management.....***

### **Inception of Community Forestry, 1978**

#### **Key principles:**

- Care and share
- People's participation
- Empowerment of women
- Ensured benefits

#### **•Master Plan for Forestry Sector (1989)**

- Six principal and six supportive programs



## **2. CF Policy, Legislation and Process:**

### **Policy:**

1. Conservation and management of forests
2. Sustainable supply of forest products
3. Poverty reduction
4. Women empowerment
5. People's participation
6. Handing over of accessible forests
7. CF management guided by Operation Plans
8. Biodiversity & ERDD+

# CF Legislation:

## *Forest Act 1993 and Regulation 1995:*

- **CFUGs are legal entities to govern, manage and use forest resource**
- **Registered at the DFO with their constitution and Operation Plan**
- **CFUGs make management decisions ( *set rules, punish the violators, fix price and sell or distribute the products etc.*)**



### ***CFUGs protect forests against:***

- ***forest fire***
- ***encroachments***
- ***land use change***
- ***Hunting / poaching***
- ***Mining***
- ***Sell or transfer land ownership etc.***

***Failing to comply these conditions may lead to withdrawal of the CF***

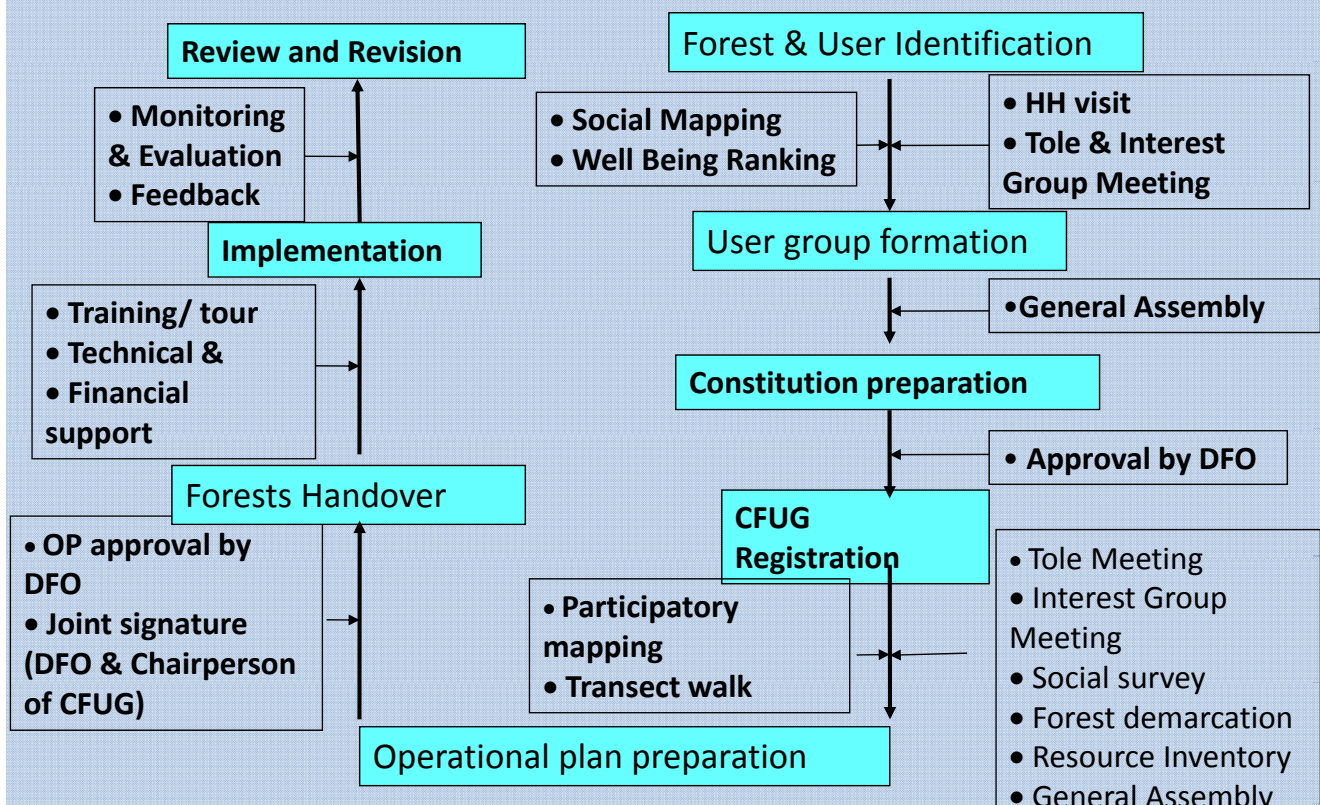




# CF Institution

Government	Communities
Ministry of Forests	Users Federation (FECOFUN)
Regional Directorate Forest	
District Forest Office	District FECOFUN
Ilaka Office	
Range Post	CFUGs clusters/Networks
CFUGs ( villages)	Village level units

## Community Forestry process



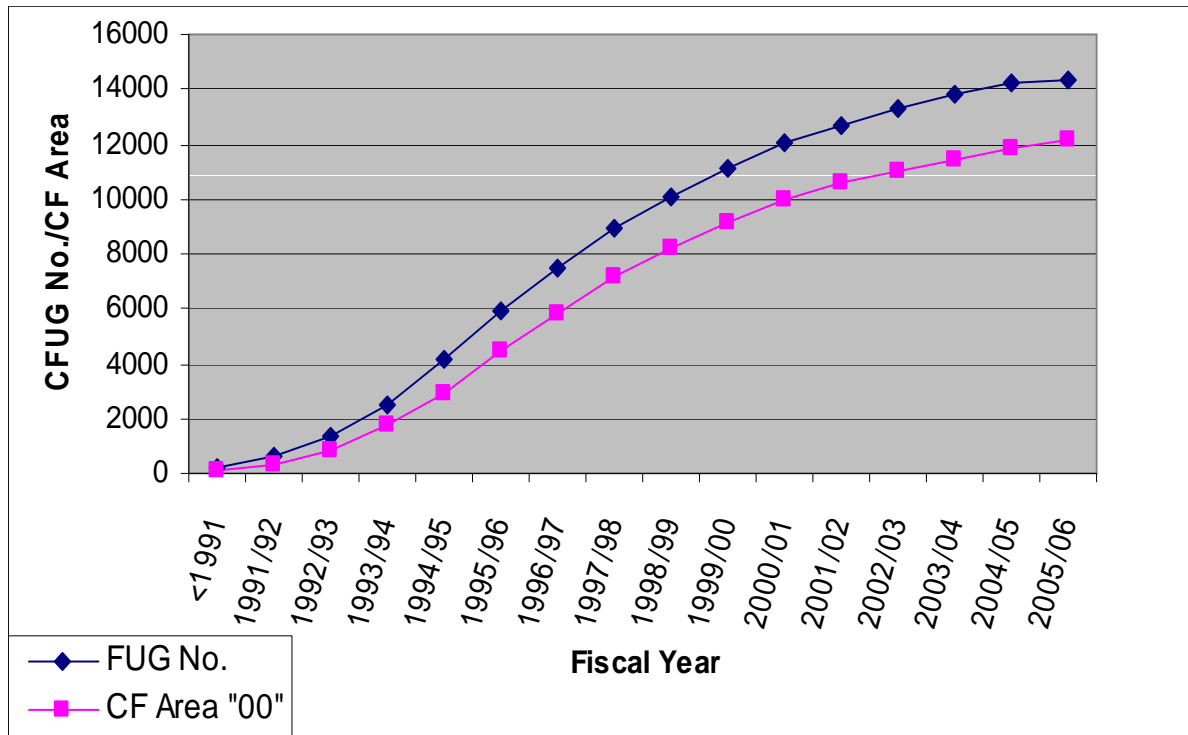
# Preparation of the Operational Plan



## **3. Achievements:**

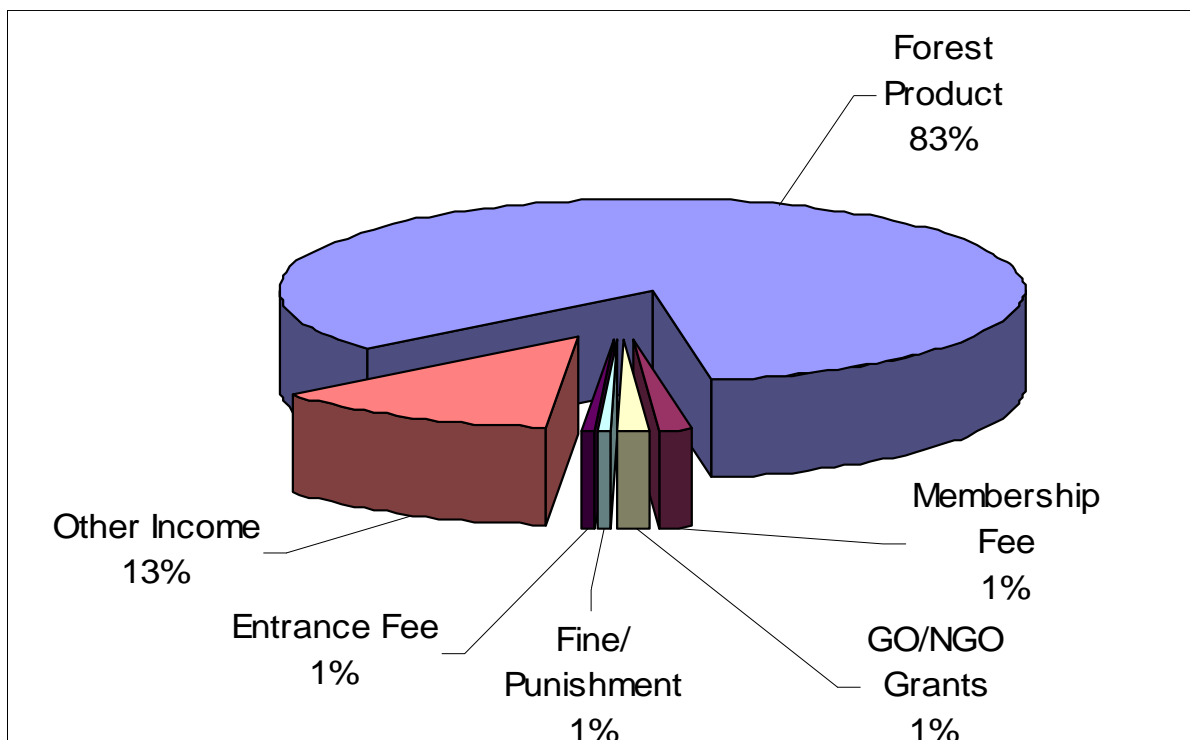
- 1. Area handed over = 1.3 million ha ( 23%)**
- 2. Total # of CFUGs = 15, 000**
- 3. Benefitting families = 1.6 m**
- 4. CF managed by women only group = 22,880ha**

## CF Hand over



## Annual Income of CFUG

(Total Annual Income = Rs 914 Million)

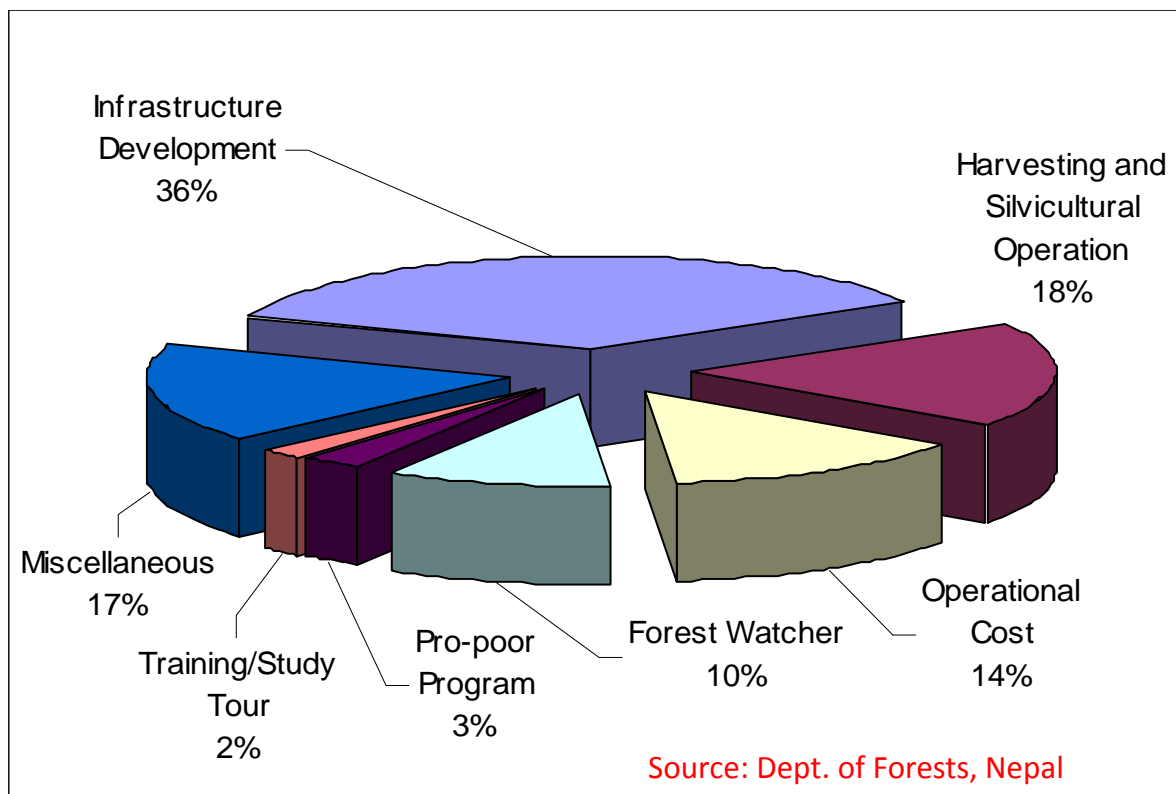


Source: Dept. of Forests, Nepal



# Annual Expenditure of CFUG

[Total Annual Expenditure = Rs. 457 Million]



## 4. CF Impact areas

- Improved forest condition
- Increased supply of forest products
- Fulfillment of subsistence needs
- Support to livelihood improvement of poor
- Rural development and governance



## *CF Impact areas...*

- **Biodiversity and environmental benefits:**
  - CF as carbon sink, regulation of water flow, water quality, biodiversity conservation etc)
  - Case studies support that CF have higher species diversity compared to PAs and Government managed forests (Pokharel et.al., 2011).
- **Spillover effect:** *Buffer Zone CF, community irrigation, community drinking water, community health etc.*
- **Building resilience - soil and water conservation, forest plantation,**

## *Impacts of Community forestry*



Dandapakhar,  
Sindhupalchowk

**1975**



**2005**

# Jiri after 37 years

1968



2005



## Sustainable use





## 5. Integration of SEPLs in the NBSAPs

SEPLs - include, *inter alia* mosaic of landscape ( *farmland, forest, water bodies and settlements*) where human society influence natural environment for their needs and/or luxury.

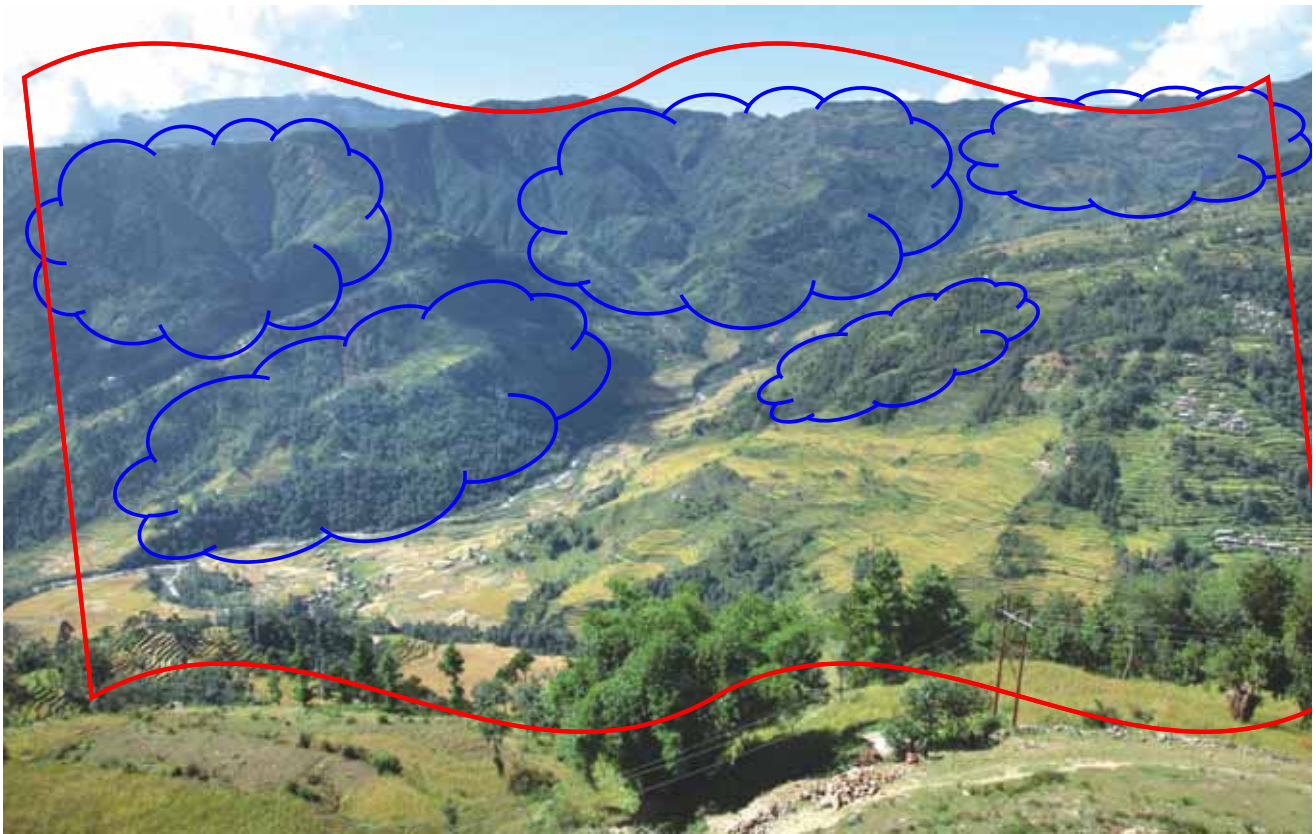


### Integration of SEPLs in NBSAPs:

1. Formation of Multistakeholder committees
2. Identification and recognition of SEPLs
3. Setting national targets and indicators

1. Use /Harmonization of existing institutions (such as CFUGS, DFSCC, DBCs, CDGs, BZ committees) for the implementation

1. Use CF approach in the implementation



Community forests in Serabesi, Dolakha, 2010

## Integration of SEPLs in the CF policy

- Integration through the provision in CF OPs. (entry point)
- Harmonises CF Committees and Local Biodiversity Committees (LBC)
- Preparation of LBSAPs at community /VDC level





## **Conclusions**

### **1. Success of CF depends on:**

- ✓ flexible and dynamic policy
- ✓ Autonomous local institutions
- ✓ Legally protected ownership/ tenure
- ✓ Assured benefits,
- ✓ Rules and regulations
- ✓ External inputs
- ✓ Good governance.

### **2. CF approach can be applicable in the management of SEPLs and other natural resources**



## ***Conclusions...***

**3. Engagement of CFUGs in the revision of NBSAPs and preparation and implementation of the LBSAPs is important.**

**3. Integrated approach to forestry and biodiversity and Multistakeholder coordination body for the effective implementation has been realised.**



**THANK YOU**

2012/6/12 7:08