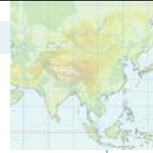


Session Theme: Policy-research linkage as the foundation of low-carbon development in Asia



Expansion of knowledge network towards sharing science-based policies: A Message from Asia

Priyadarshi R. Shukla
Indian Institute of Management, Ahmedabad

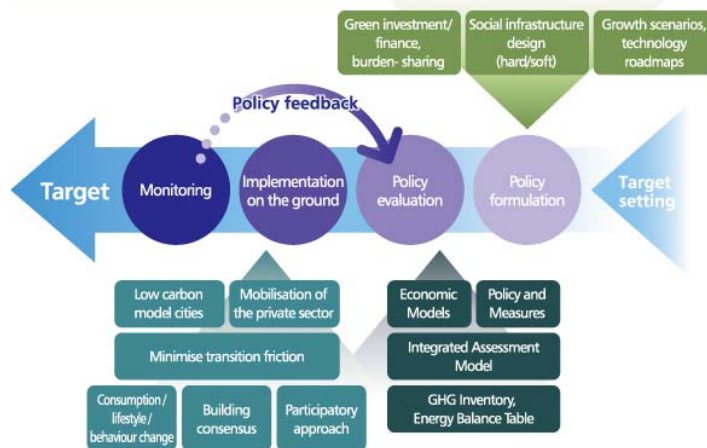
Presented in:
ISAP2014: International Forum for Sustainable Asia and the Pacific: ISAP
Yokohama, Japan, July 23-24, 2014

Indian Institute of Management, Ahmedabad, India

Linking Policy and Science

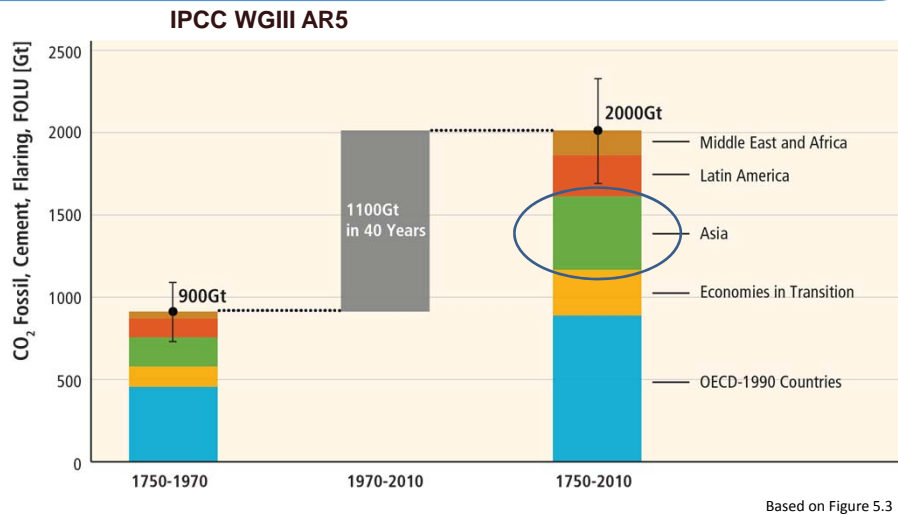


Formulation of low-carbon growth policies - Process, data, knowledge, tools and methods



Indian Institute of Management, Ahmedabad, India

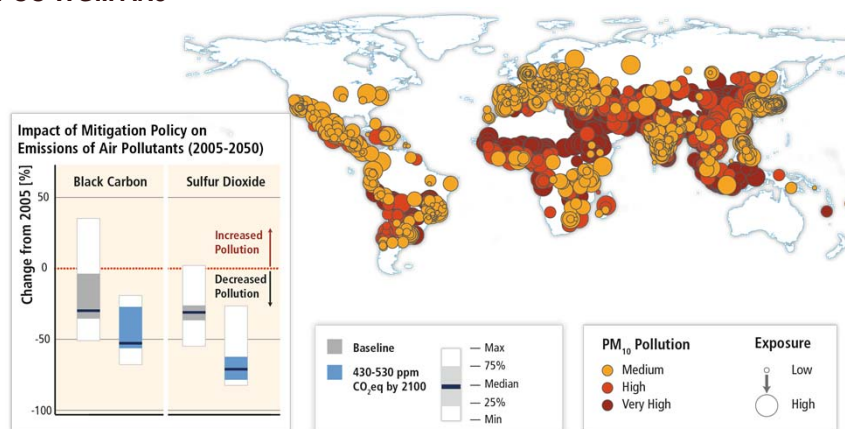
About half of cumulative anthropogenic CO₂ emissions between 1750 and 2010 have occurred in the last 40 years.



Indian Institute of Management, Ahmedabad, India

Mitigation can result in large co-benefits for human health and other societal goals.

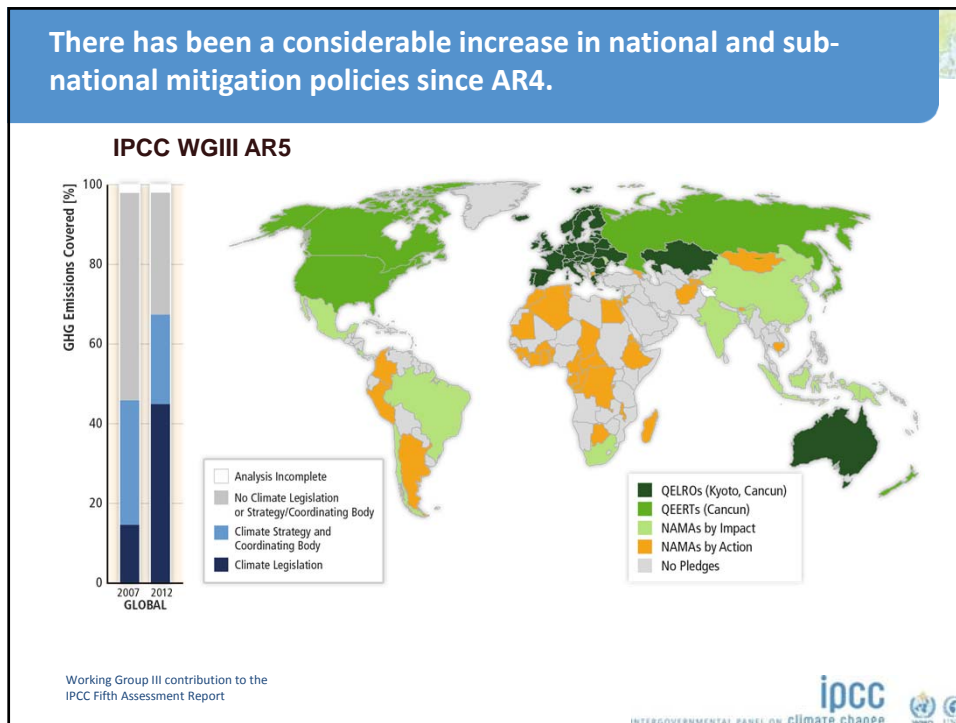
IPCC WGIII AR5



Based on Figures 6.33 and 12.23

Working Group III contribution to the IPCC Fifth Assessment Report

ipcc
intergovernmental panel on climate change



Recommendation 1: Internationalize Regional Low Carbon Networks

<http://lcs-rnet.org/>

Stabilising Climate International Research Network for Low Carbon Societies and Low Carbon Asia Research Network

HOME About LCS-RNet About LoCARNet LCS-RNet Meetings LoCARNet Meetings Publication Restricted Contact Japanese

COP19 LCS-RNet side-event: "Transition to Low-Carbon Resilient Societies: From Theory to Reality"

LCS-RNet side event of the UNFCCC COP19 was held on 19 November in Japan Pavilion. It introduced efforts towards realising low-carbon transition in several countries.

→ Read more

Opening Ceremony for the Climate Change International Technical and Training Center (CITC)

COP19 LoCARNet side event: GHG Emissions Reduction Potential in Asia for the Two Degree Target

COP19 LCS-RNet side-event: "Transition to Low-Carbon Resilient Societies: From Theory to Reality"

Indian Institute of Management, Ahmedabad, India

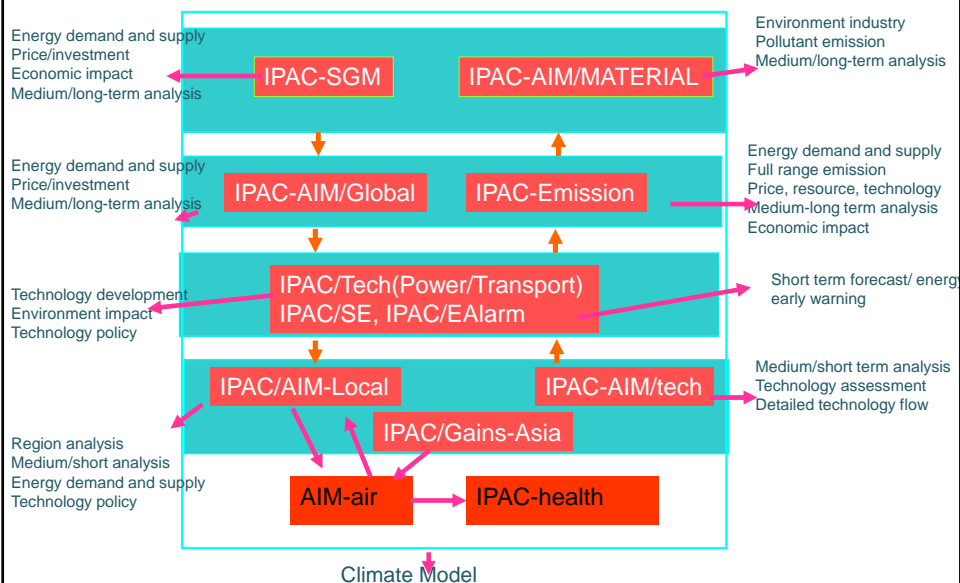
1. Close links exist between LCS-RNet and LoCARNet
2. Immediate steps should be to target policy relevant research outputs for 2015 negotiations
3. Linking with low carbon research networks in other regions
4. Developing common policy protocols for comparative research

Recommendation 2: Focused and Shared Research

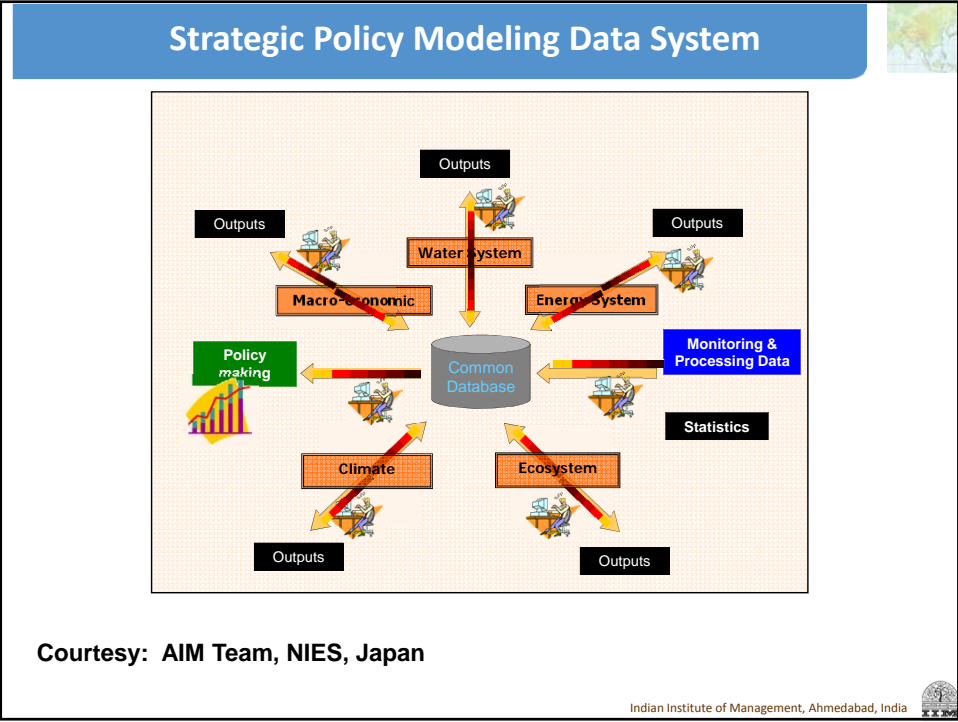
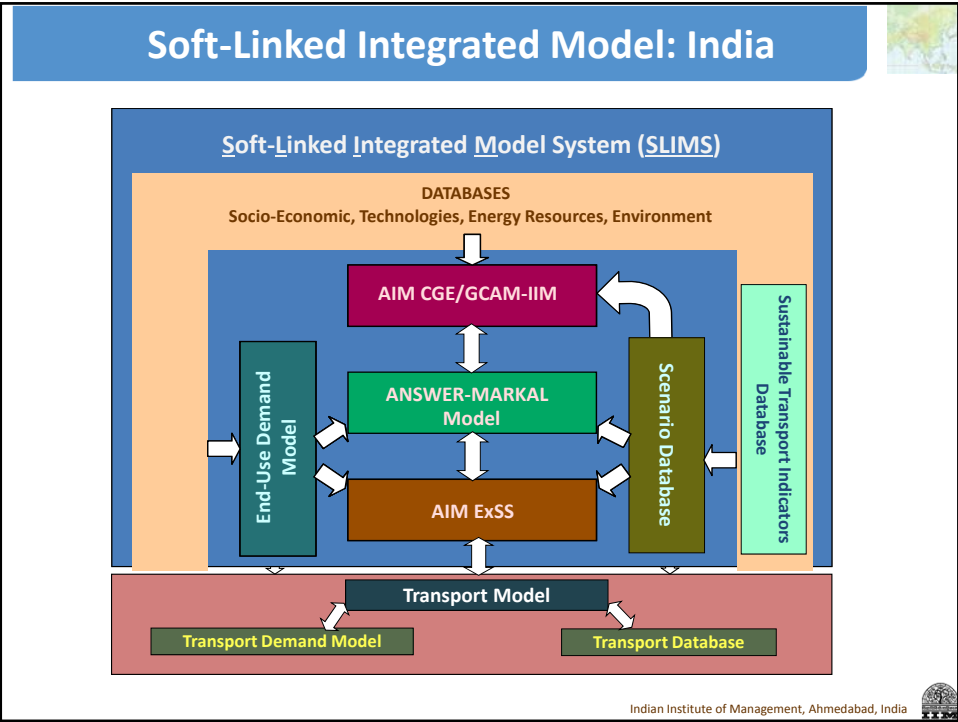
1. Share Frameworks, Methodologies, Tools and Models
2. Shared Strategic Databases
3. Develop Common Policy Agenda for Targeted Research
4. Actively Link Research to:
 - Global – Regional Policy Agenda
 - Regional - National Policy Agenda
 - National - Sub-national Policy Agenda
5. Connect Actively with Policy Forums
6. Engage Policy-makers by preparing Policy Relevant Briefs

A 'Good Practice' example is Asia-Pacific Integrated Model (AIM) Research Network led by NIES, Japan since nearly a quarter century

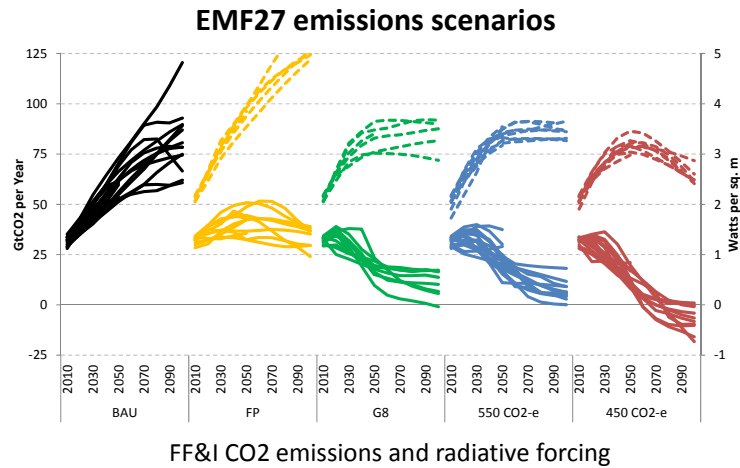
Framework of Integrated Policy Model for China (IPAC)



Courtesy: ERI, China



Recommendation 3: Organize Comparative Policy Research Exercises



Ref:
 1. Blanford, Kriegler, Tavoni, 2014, Climatic Change 123(3-4)
 2. Kriegler, Weyant et al., 2014, Climatic Change 123(3-4)

Indian Institute of Management, Ahmedabad, India

Recommendation 4: Research to Operationalize Policy Instruments

1. Emissions Trading
2. CDM: e.g. Baseline determination
3. NAMAs implementation
4. Green Climate Fund
5. Carbon Bonds
6. Connect Actively with Policy Forums
7. Engage Policy-makers by preparing Policy Relevant Briefs

Indian Institute of Management, Ahmedabad, India

Message from Asia

1. **Global Engagement:** Internationalize Regional Low Carbon Networks
2. **Purposive Cooperation:** Focused and Shared Research
3. **Inclusive Vision:** Organize Comparative Policy Research Exercises
4. **Practicality:** Research to Operationalize Policy Instruments

'Good Practice' examples show that policymakers have keen interest in low carbon policy research and would support the knowledge networks so long as research is purposive, inclusive and practical.

Thank you

