


KAWASAKI CITY


Overview of Kawasaki City



- **Area: 144 km²**
- **Population: 1.45 mil (9th in the nation)**
(as of Jan 1, 2014)
- **No. households: 680,000**
(as of Jan 1, 2014)
- **Population density: 10,033 ppl/ km²**
(2nd out of designated cities)
(as of Oct 1, 2013)


- **City GNP: ~JPY 5.2 trillion**
- **Major industries:** Production (iron & steel, precision machinery, petrochemicals)
- **Growth industries:** Telecommunications, environment welfare, life sciences

Geographical advantage of being located in a metropolitan area
Highly-convenient transportation network of roads, railroads, and airports



埼玉県 Ibaraki Pref.
埼玉県 Chiba Pref.
東京都 Tokyo
神奈川県 Kanagawa Pref.
川崎市 Kawasaki City

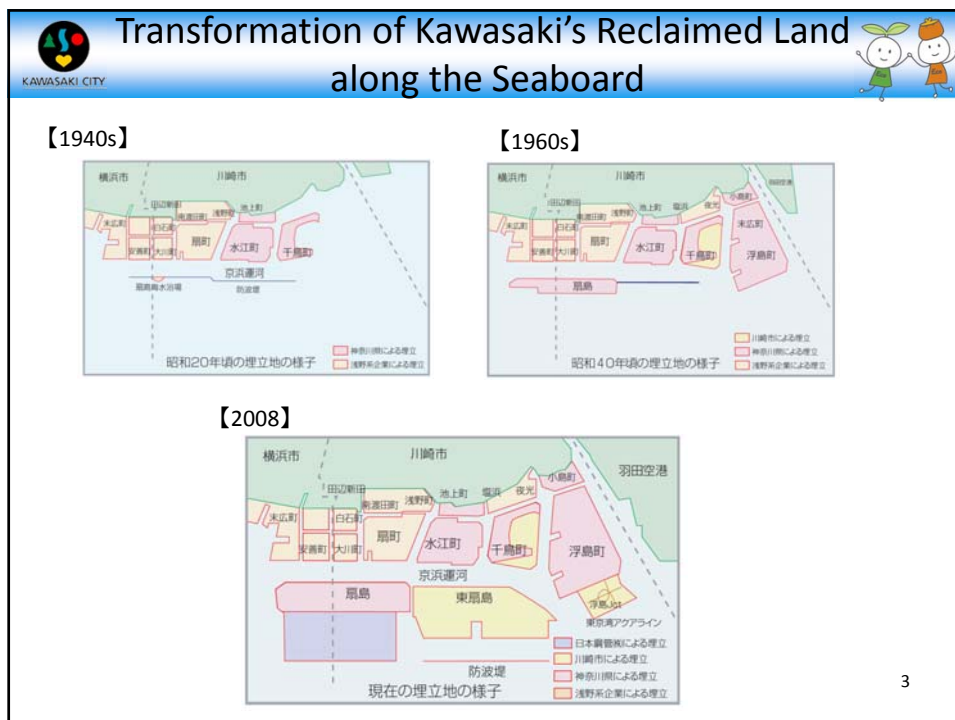
(2) 測定地点 (Monitoring points)



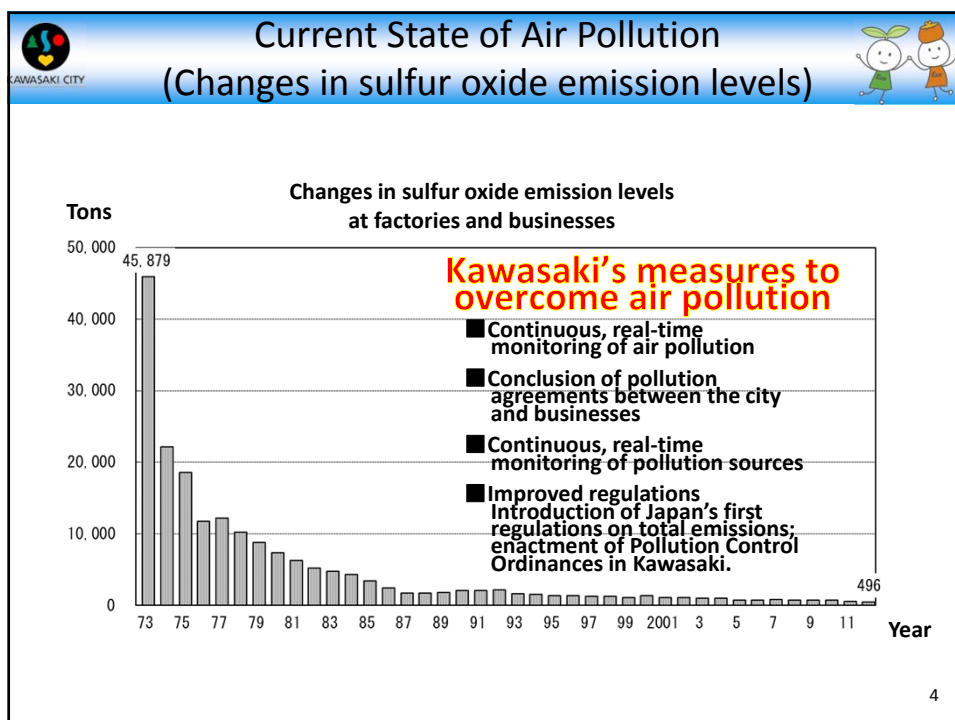
川崎市中環 (Kawasaki-Fuchu road)
多摩川線道路 (Tama road)
東武東上線 (Tōmei Highway)
国道246号 (Route 246)
世田谷町田線 (Setagaya-Machida road)
長手瀬川線 (Nagatasegawa road)
川崎市 (Kawasaki City)
国道466号 (Route 466)
中環道路 (Chūkan road)
国道1号 (Route 1)
首都高速湾岸線 (Tokyo bay Highway)
国道15号 (Route 15)
国道409号 (Route 409)
首都高速横浜新田線 (Yokohama Shinoda Highway)
国道132号 (Route 132)

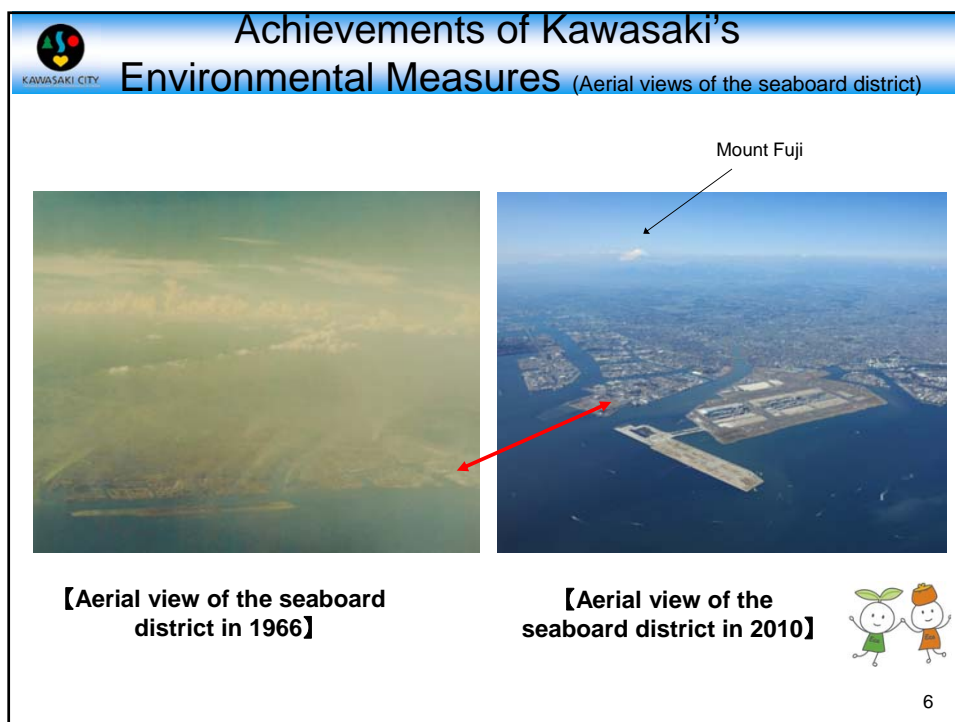
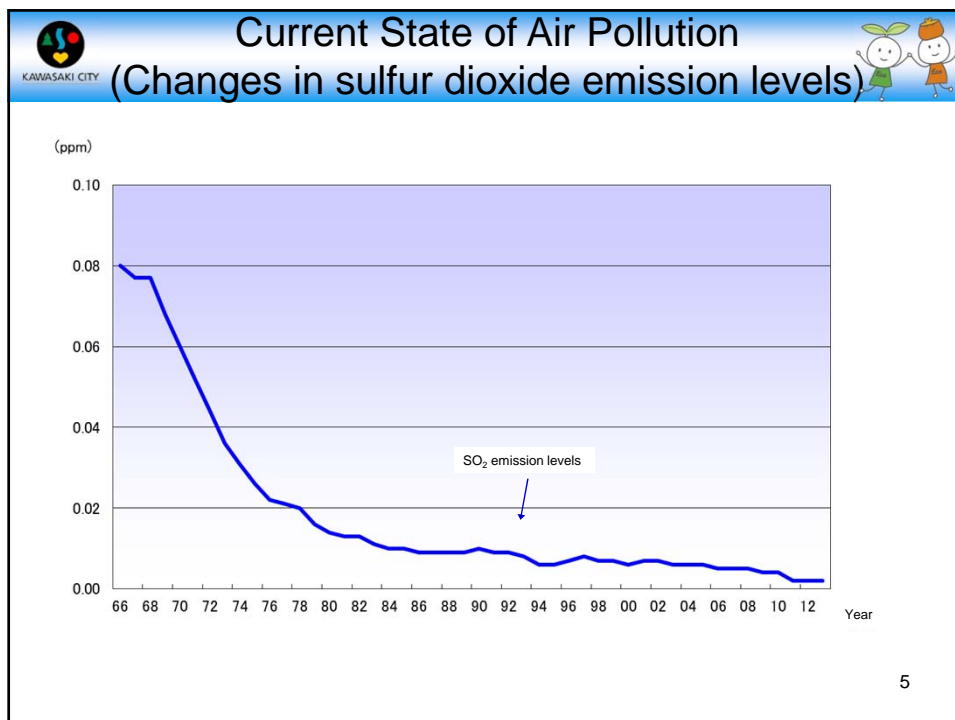
- To Haneda Airport: 15 min.
- To Tokyo Station: 18 min.
- To Yokohama Station: 10 min.

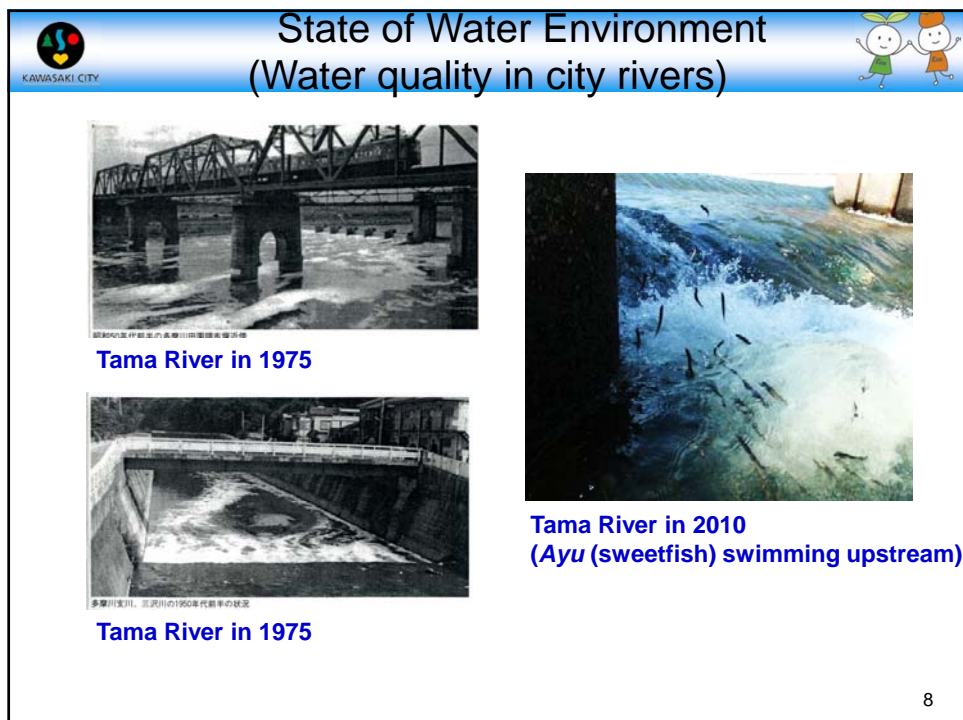
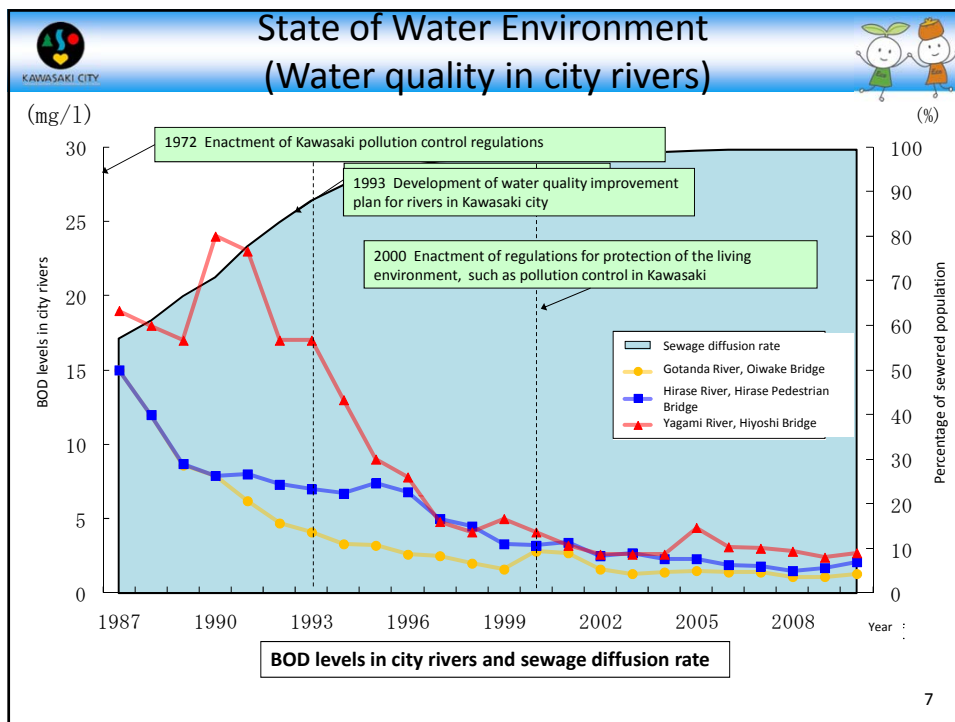
Many factories are concentrated in the city's seaboard area

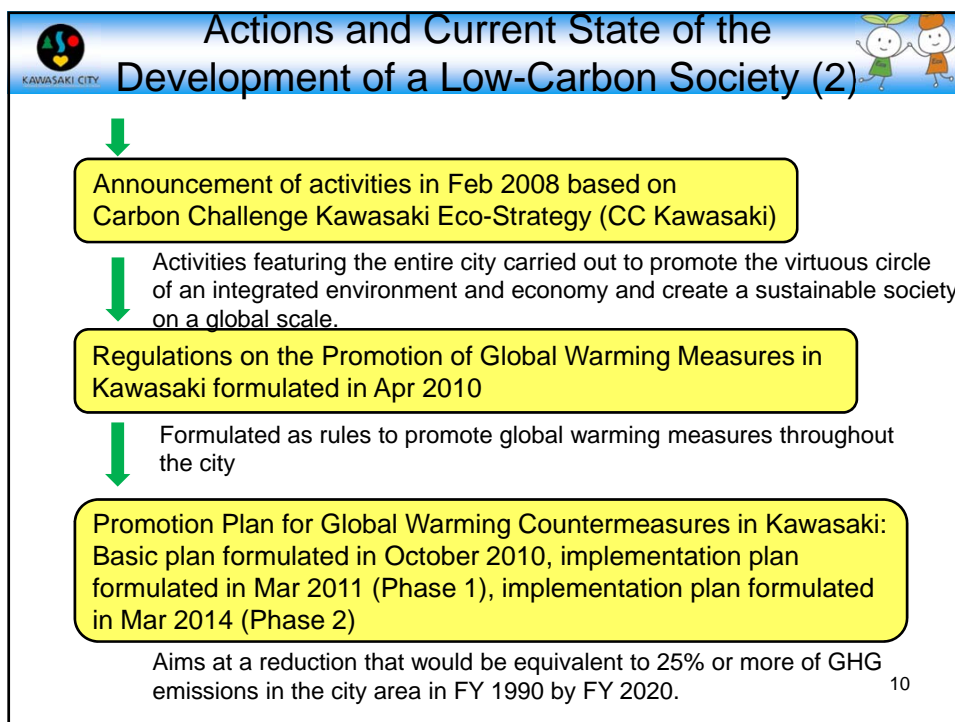
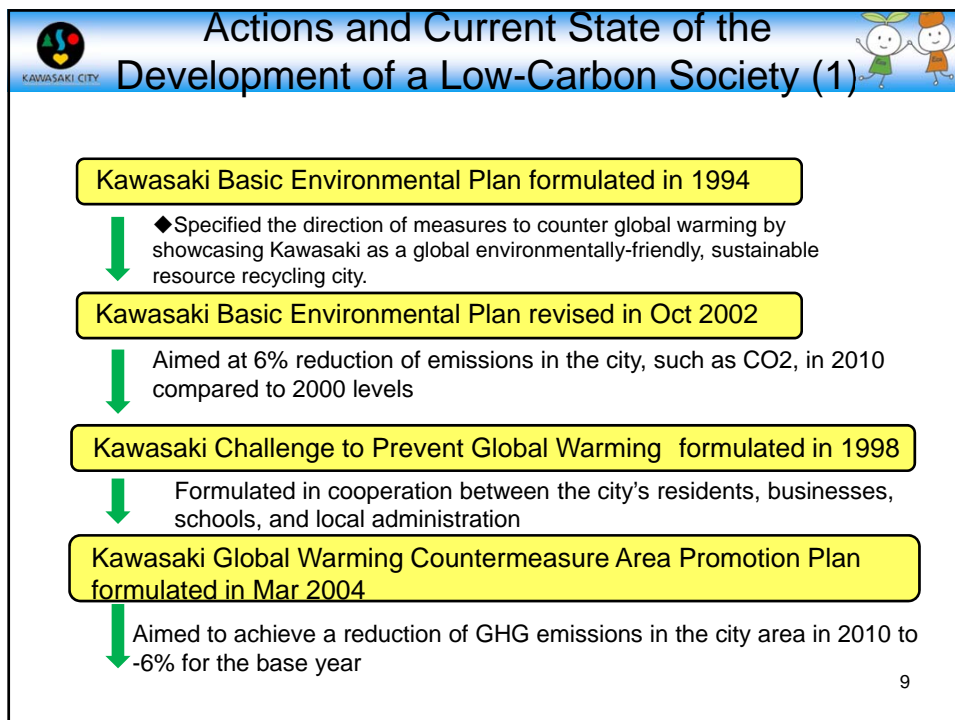


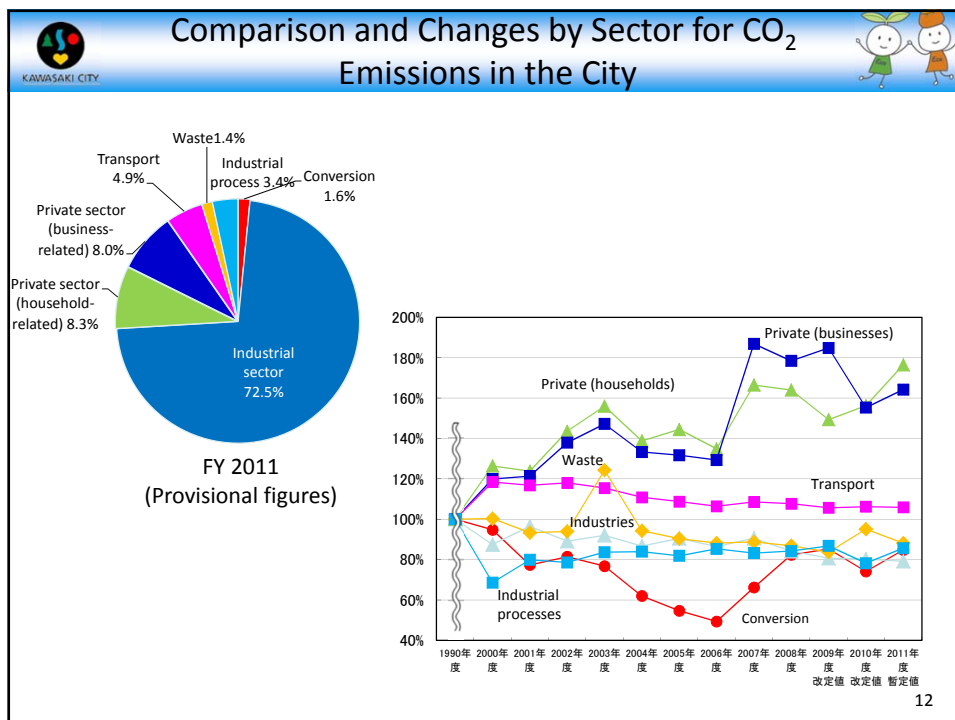
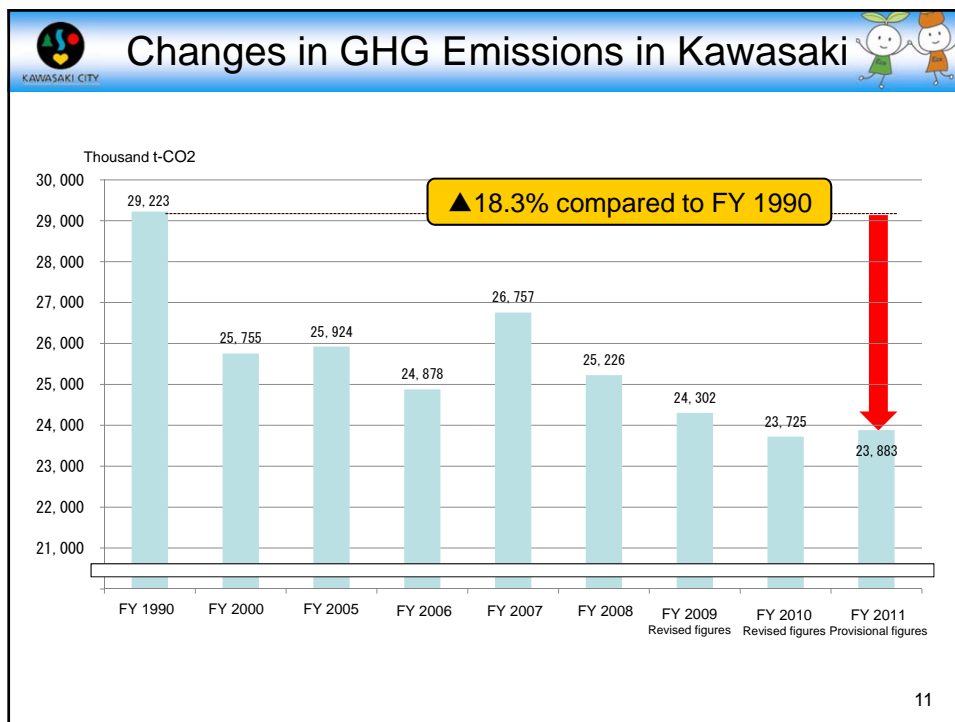
3













Overview of Kawasaki Eco-Town



- Eco-Town plan recognized by the Ministry of International Trade and Industry (now the Ministry of Economy, Trade and Industry) in 1997.
- Target area is the entire seaboard area of Kawasaki (2,800ha) located in the metropolitan area.
- Development and expansion of resource-recycling production activities of existing businesses and promotion of construction of new resource recycling facilities.
- Development of Kawasaki Zero-Emissions Industrial Complex, a resource-recycling and energy-saving area that uses waste as materials and resources for production.

2014/7/22

Eco-town area



Kawasaki Zero-Emissions Industrial Complex

13



Main Facilities in Kawasaki Eco-Town



① Biomass power station
 • Output (planned): ~33,000 kW
 • Site area: ~3.2ha
 • Start of operations: Feb 2011
 Implementing body: Kawasaki Biomass, other, selected for NEDO subsidy
 • Treatment facility that supplies fuel for use at power plants (joint establishment with Japan Bio-Energy)

② Cement plant
 • CO₂ reductions by effective use of waste and by-products for raw fuel for cement
 • CO₂ reductions through production of blast furnace clinker
 Implementing body: TC Corporation

③ Construction of a dry recycling, incineration, gasification and plasma treatment of waste substances: 90% reduction of gas: 60% reduction of CO₂
 Start of operations: 1st FY 2007
 Implementing body: Zosh Corporation

④ Development of advanced technologies for efficient manufacturing of rock oil-based petroleum products, suitable for the application of different heavy-oil cracking
 • Industrial waste recycling
 • Oil Co., Ltd. (Rohm, Shell, Sekiyu K.K., Toa)

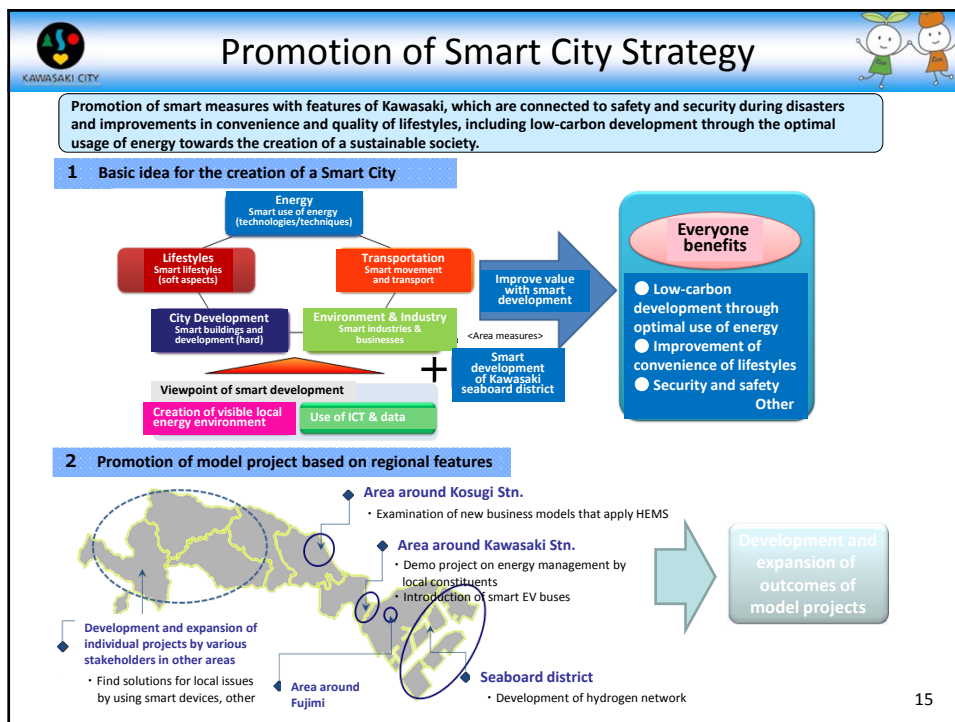
⑤ Soil remediation plant
 • Implementing body: Shimizu Corporation
 • Treated volume: 40 t/year
 • Start of operations: 2003
 • Specifically for heavy metals
 • Treated volume: 5 t/h
 • Start of operations: May 2009

⑥ Facility for manufacturing of plastic bottles
 • Treated volume: 58,000 t/year (mainly PET bottles)
 • Start of operations: 2003
 • Implementing body: Showa Denko K.K.

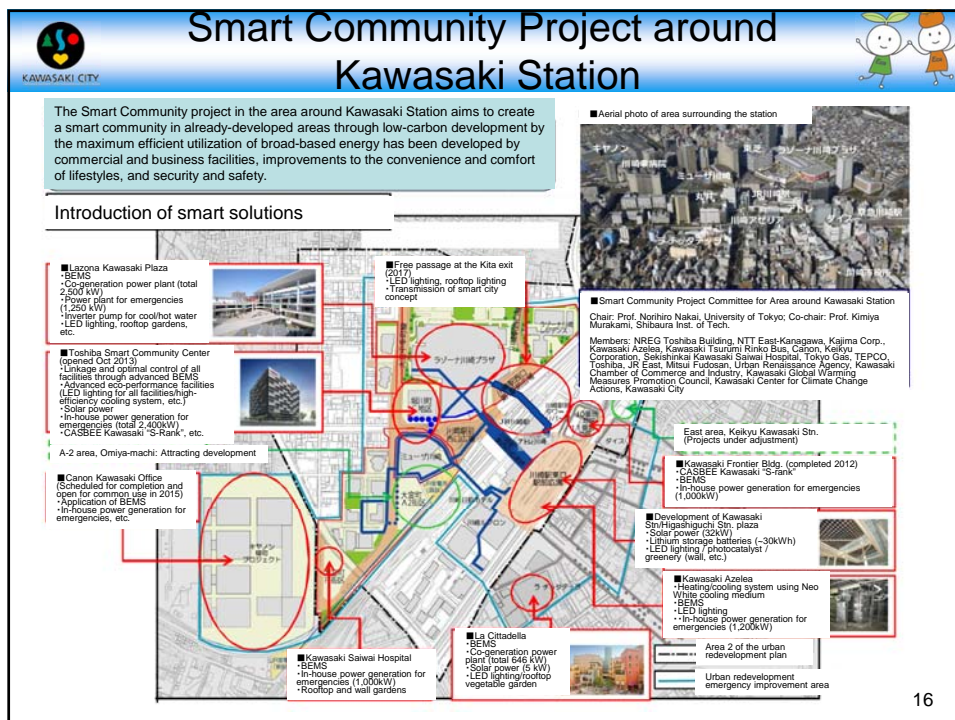
⑦ PET to PET recycling plant
 • Treated volume: 23,000 t/year (mainly PET bottles)
 • Start of operations: 2001
 • Implementing body: PET Refine Technology Co., Ltd.

⑧ Recycling plant for glass and plastic
 • Treated volume: 81,000 t/year (mainly PET bottles)
 • Start of operations: 2002
 • Implementing body: Sanyo Regulator Co., Ltd.

⑨ Manufacturing plant for processing waste
 • Treated volume: 25,000 t/year
 • Start of operations: 2000
 • Implementing body: JFE Kankyo
 • Household appliance recycling plant
 • Treated volume: 10,000-50,000 appliances/year
 • Start of operations: 2001
 • Implementing body: JFE Kankyo
 • PET bottle recycling plant
 • Treated volume: 12,000 t/year
 • Start of operations: 2002
 • Implementing body: JFE Kankyo
 • Recycling of residuals for concrete
 • Treated volume: 25,000 t/year
 • Start of operations: 2002
 • Implementing body: JFE Kankyo Corporation



15



16



KAWASAKI CITY

Thank you for your kind attention.

