

Scaling up demonstration project to transformative action - Lessons from the current city-to city collaborations



Y-PORT
YOKOHAMA PARTNERSHIP OF RESOURCES AND TECHNOLOGIES

Development Cooperation Division,
International Affairs Bureau, City of Yokohama

1

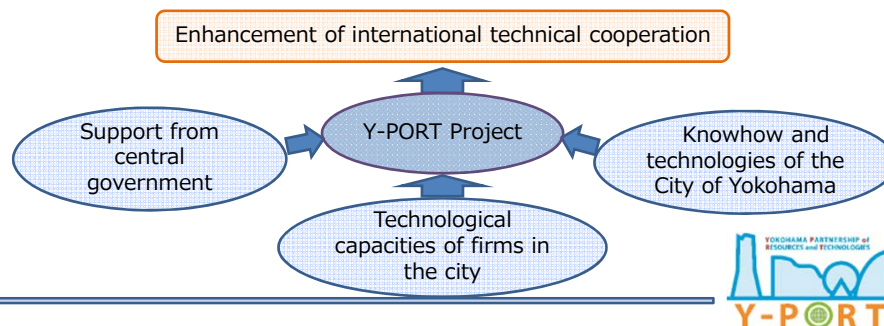
Yokohama's International Technical Cooperation (What is Y-PORT?)



Yokohama Partnership of Resources and Technologies

International technical cooperation based on public-private partnership and drawing on the resources and technology of Yokohama

- It is essential to provide not simple products but solutions through combining technologies and knowhow of the public and private sectors



2

Collaboration with Governmental/International authorities and Cooperation with Cities

Comprehensive Partnership Agreement with JICA (25th October, 2011)

- Strengthening cooperation to solve urban problems in developing regions

Memorandum of Understanding on Collaboration with Asian Development Bank on 16th October, 2013

- Utilizing knowhow and technologies of the City of Yokohama and Yokohama private firms to ADB Project

** It was the first time for JICA and ADB to conclude the comprehensive agreement or MOU with a local government.*

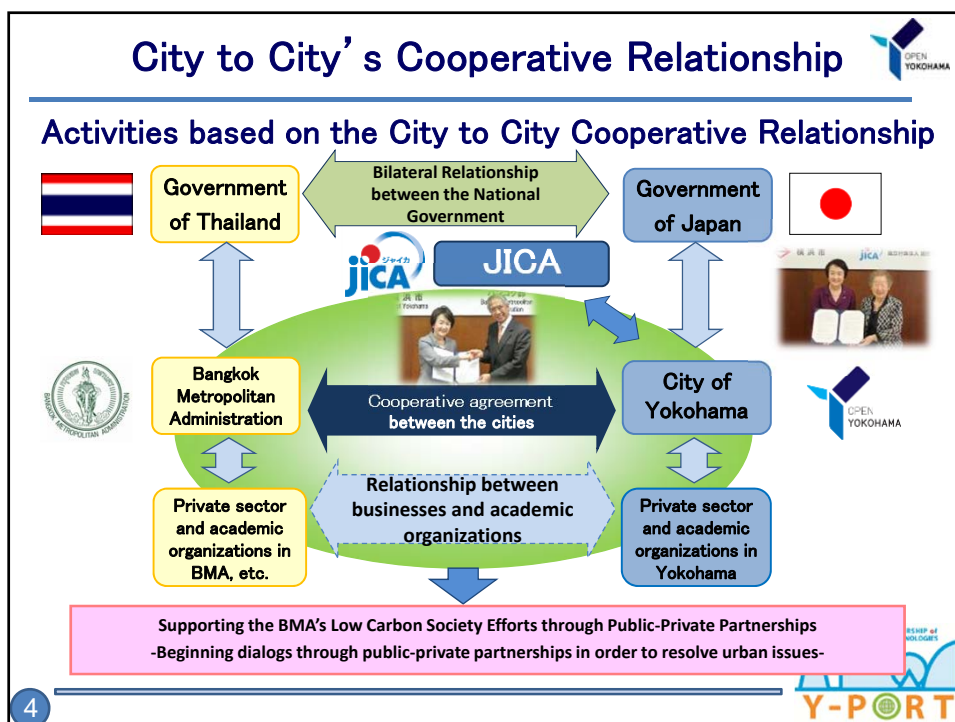


Memorandum of Understanding on Technical Cooperation for Sustainable Urban Development Signed with BMA on 21st October, 2013



Contents of Agreement

1. The City of Yokohama will offer technical advice in promoting sustainable urban development of Bangkok in the area such as energy management, public transportation, solid waste and waste water management, etc.
2. The Parties will encourage participation of the private sector, academic institutions, and local communities which have expertise and knowledge on low carbon society development to achieve the above mentioned objective.
3. The Parties will call for support of Central Governments of both sides and international organizations in pursuing appropriate assistance to implement technical cooperation.
4. The Parties will share and exchange information which is essential to implement the above collaboration effectively.



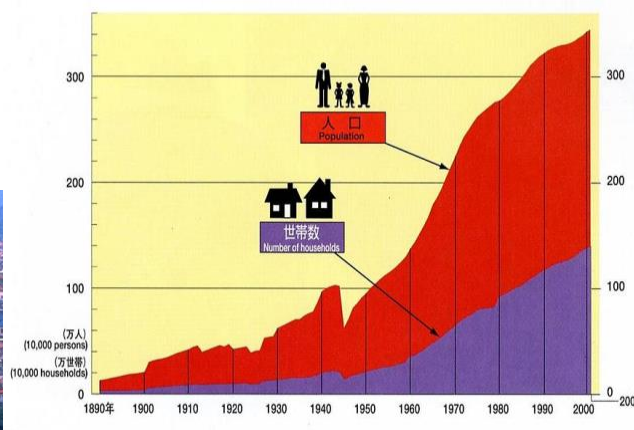
Emergence of urban problems caused by the rapid population growth in Yokohama



The population doubled in the 20-year period between 1960 and 1980 (from 1.37 million to 2.77 million)



Intensification of Sprawl and Urban problems



Urban Challenges: Rapid Urbanization

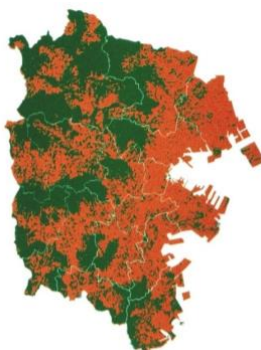


Urban sprawl,
Loss of forests . . .

1960

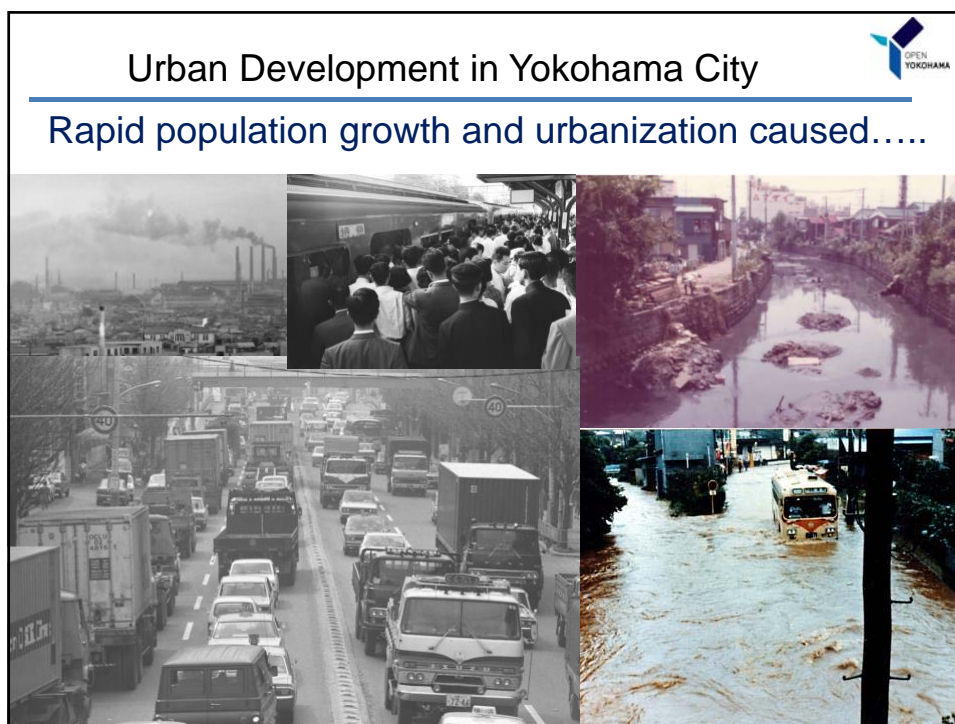


1980



2000





Climate Change and Bangkok



✓ Climate change is one of the largest challenges to the current and future development of human society.

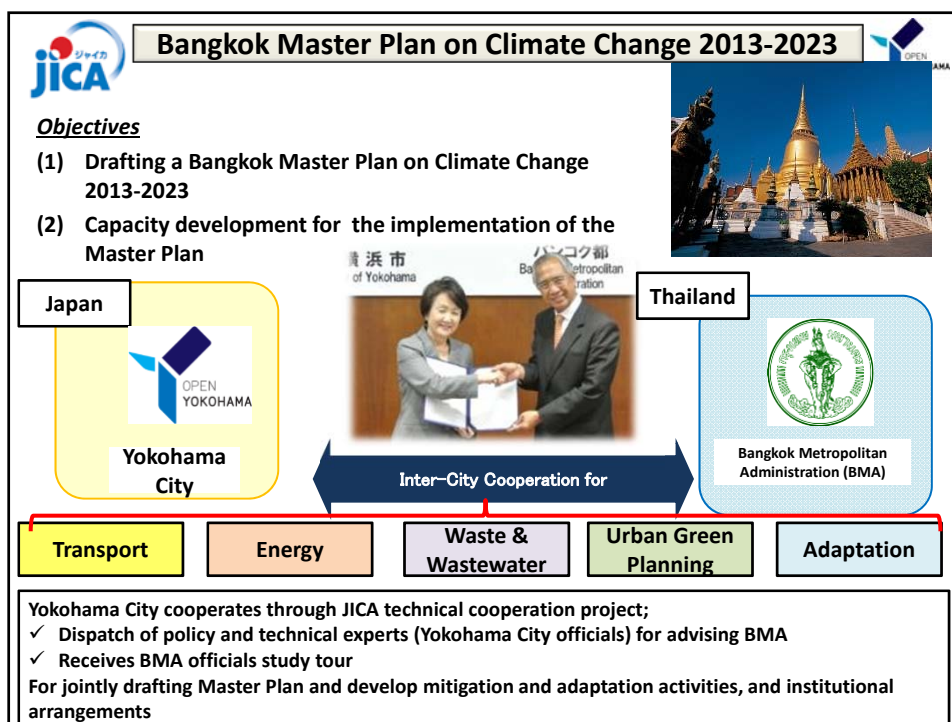


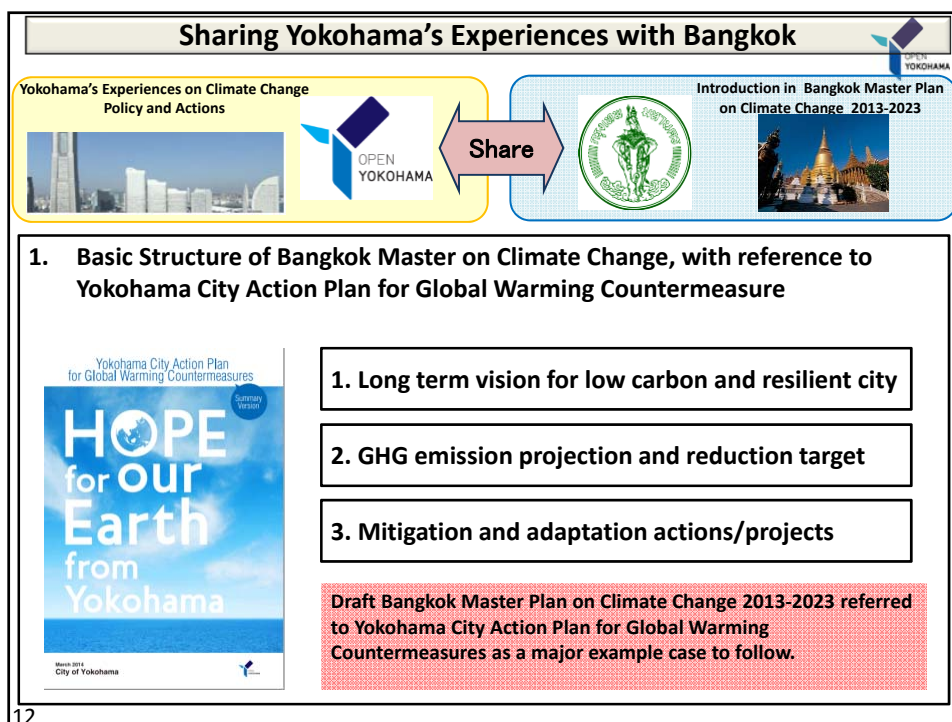
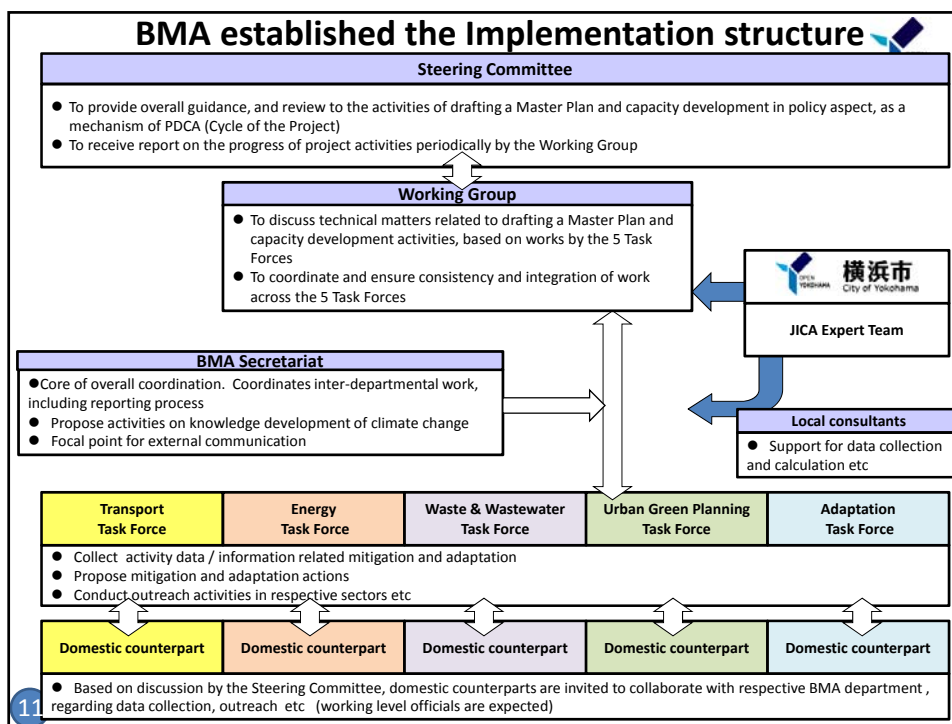
✓ For Bangkok, climate change has become a big and real challenge.



✓ At the same time, expanding economic and social activities in Bangkok has caused large emission of GHGs.

9





Sharing Yokohama's Experiences with Bangkok

Yokohama's Experiences on Climate Change Policy and Actions






Introduction in Bangkok Master Plan on Climate Change 2013-2023




2. Promoting participation and partnership of the Private Sector





High-level participants of Bangkok, Yokohama and the Private Sector for Public-Private Partnership Workshop on Climate Change



As a major characteristic of Yokohama's Climate Change Policy, Yokohama emphasizes active participation by and the partnership with the Private Sector


In the Bangkok Master Plan on Climate Change, effective partnership with the Private Sector have been considered, and some experts were invited to demonstrate their roles during the drafting process and study tour to Japan (ESCO, and other energy efficiency actions)

13



Sharing Yokohama's Experiences with Bangkok

Yokohama's Experiences on Climate Change Policy and Actions








Introduction in Bangkok Master Plan on Climate Change 2013-2023

3. Introducing Energy Efficiency Policy Tools and Schemes (BEMS, HEMS, ESCO, CASBEE etc.)

During master plan drafting process, Building Energy Efficiency has been a strong focus. And learning from Yokohama's experiences, BMA included in the Master Plan

- BEMS and HEMS
- ESCO
- CASBEE

For actual mitigation actions to be taken

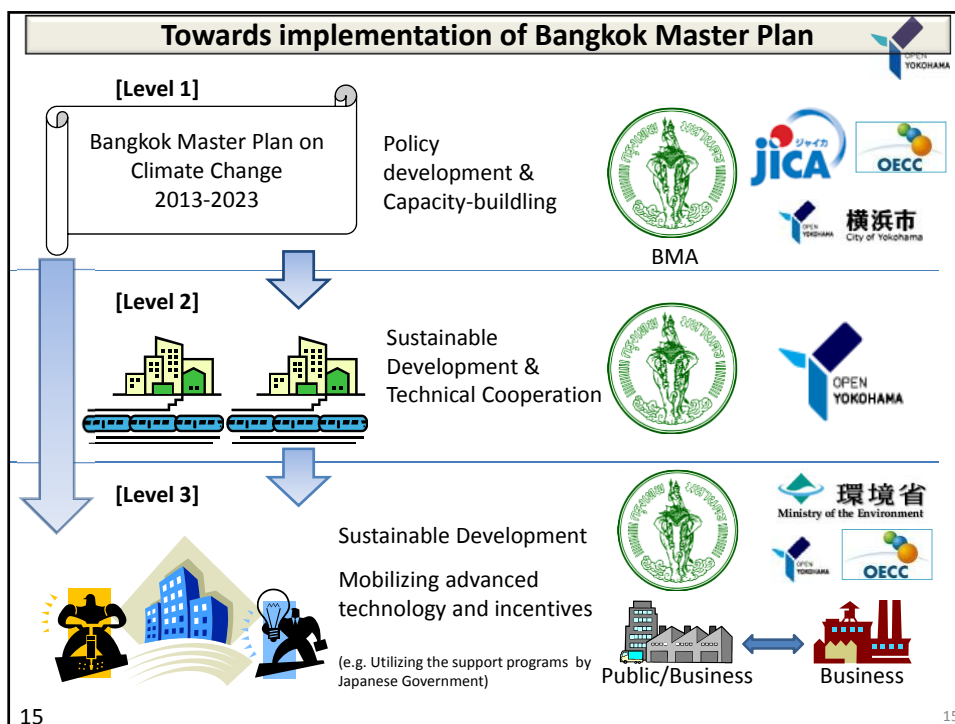
Also for Outreach activities targeted at the Private Sector and citizens (during May-July 2015) are planned.

- Demonstration of ECO Incentive mechanism (ESCO etc)
- Exhibition of ECO Products

Case Study of Amarin Plaza in Bangkok for ESCO

BEMS: Building Energy Management System HEMS: House Energy Management System
ESCO: Energy Service Company CASBEE: Comprehensive Assessment System for Building Environmental Efficiency

14



4th Asia Smart City Conference

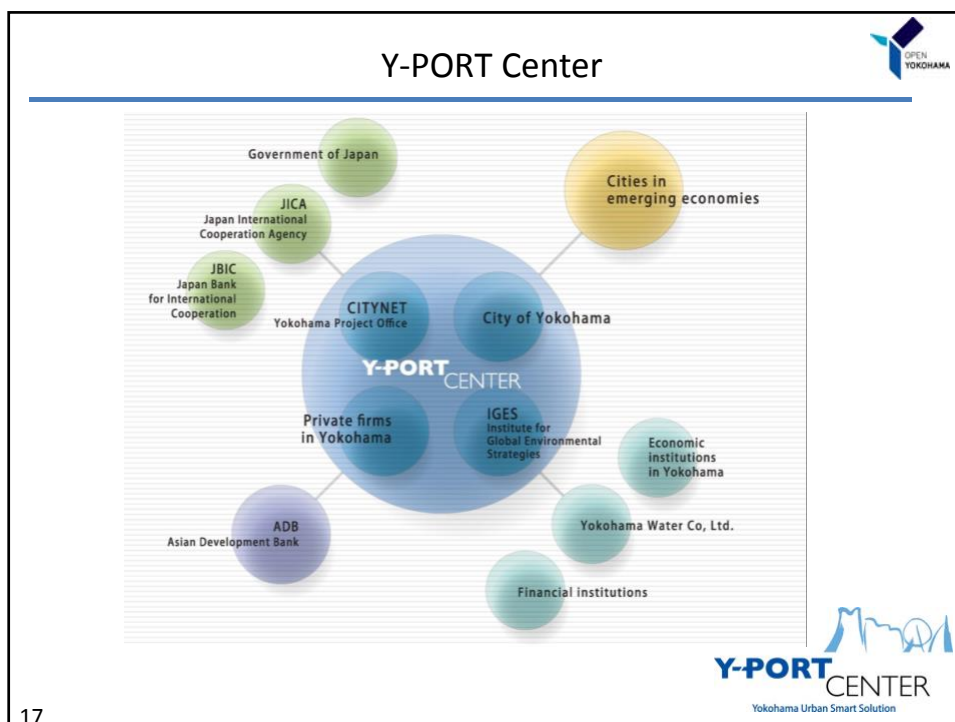
- International conference organized by the City of Yokohama, held in connection with Seminars by the Ministry of the Environment of Japan and “Asia Smart City Summit” by Nikkei BP.
 - Forging cooperative relationship and alliance among Asian cities
 - Sharing practical and feasible methods on urban development and management
 - Encouraging dialogue among international aid organizations and cities
- Date: Tuesday 20th October 2015
- Venue: InterContinental Yokohama Grand
- Expected participants: Mayors or head representatives of 20-30 Asian cities, representatives of Japanese government and international organizations





Y-PORT CENTER
Yokohama Urban Smart Solution

16



Y-PORT Center

- ◆ What Y-PORT Center offers
 - Providing best available urban solutions and practical smart urban management knowledge to cities in emerging economies.
 - Co-creating urban solutions through dialogue with private firms with cutting-edge technologies, cities, and global think tanks.
 - Enhancing communications with and gaining support from the government of Japan and donor agencies in the area of smart urban development.

18

