

People need nature to thrive  
自然を守ることが、人間を守ること



LA NATURALEZA  
ES LA MEJOR MA-  
ESTRA DE LA VERDAD  
¡NO LA DESTRUYAS!

[www.conservation.org](http://www.conservation.org)

twitter: @CI\_Japan

 **ISAP 2015**

Parallel Session:  
“Satoyama” and  
Sustainable Development  
Bridging Project  
Financing and Knowledge  
Generation

## GEF- Satoyama Project:

*Mainstreaming  
sustainable management  
of SEPLS towards SDGs*

29 July 2015

Yasushi Hibi  
Managing Director  
CI Japan

**CONSERVATION  
INTERNATIONAL**



## Background

- Socio-Ecological Production Landscapes and Seascapes (SEPLS): Production landscapes and seascapes that integrate the values of biodiversity and social aspects harmoniously with production activities
- SEPLS exists throughout the world in different forms but increasingly threatened
- Underlying causes include poverty, rapidly expanding human population, and lack of appreciation of their values
- Appropriate valuation of SEPLS can contribute greatly to sustainable development

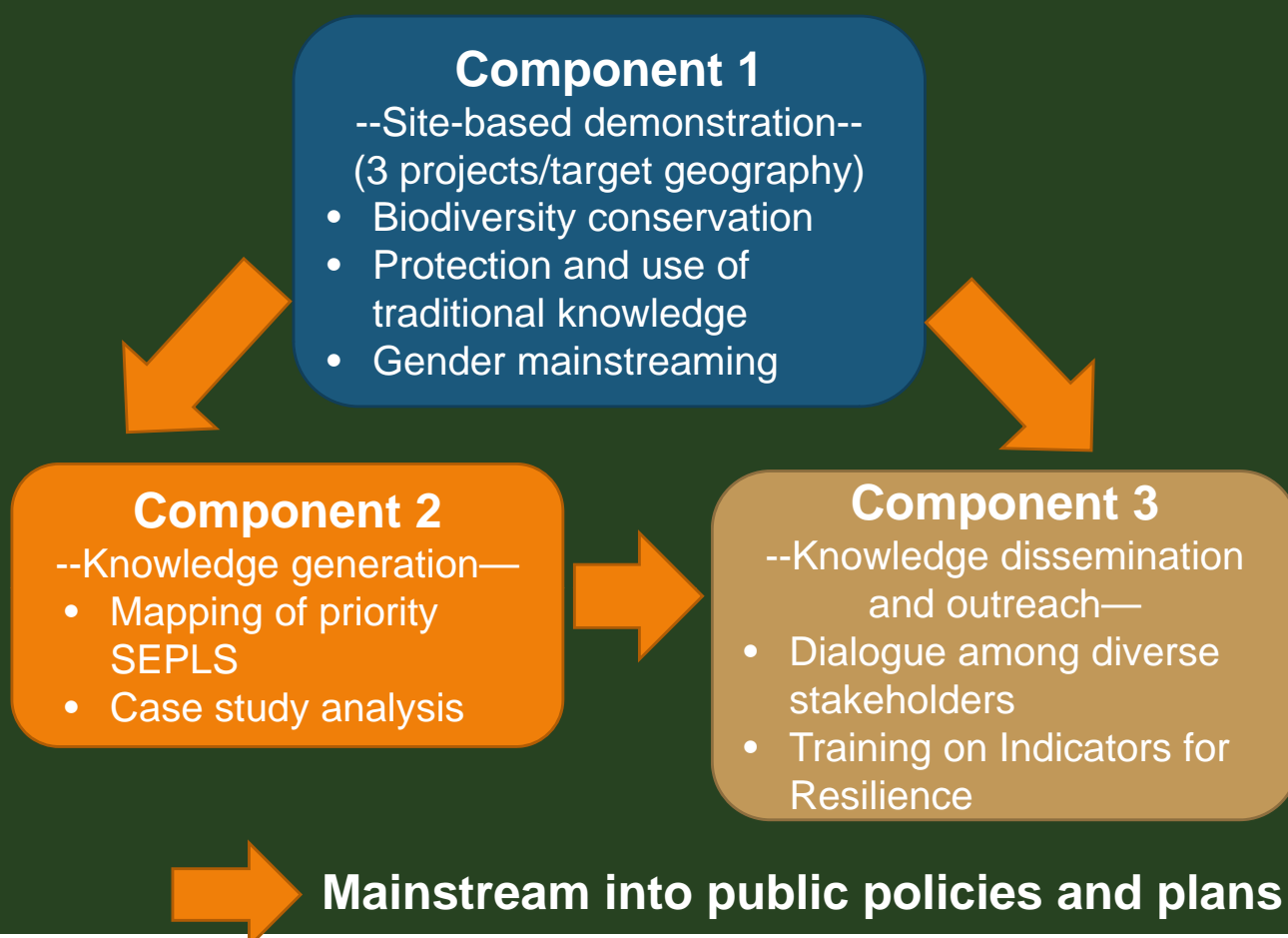
# GEF-Satoyama Project

**Mainstreaming biodiversity conservation and sustainable management in priority Socio-ecological Production Landscapes and Seascapes**

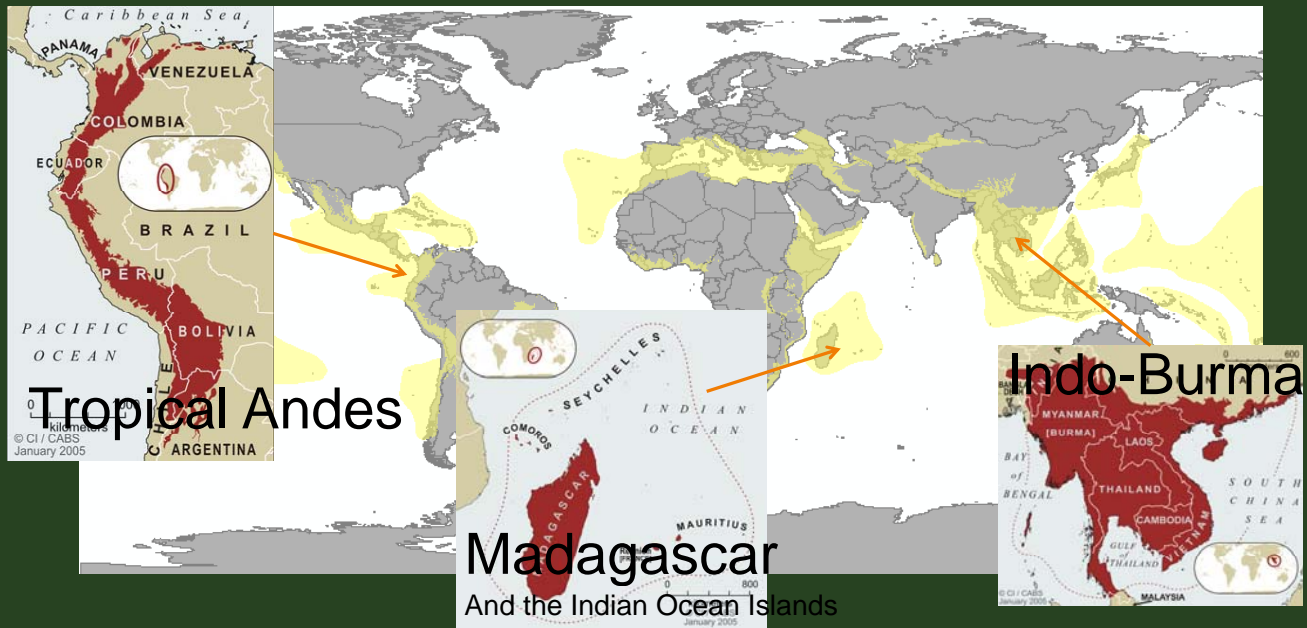
□ **Project Vision:** Society in harmony with nature, with sustainable primary production sector based on traditional and modern wisdom, and making significant contributions to global targets for conservation of biological diversity

□ **Project Objective:** To mainstream conservation and sustainable use of biodiversity and ecosystem services, while improving human well-being in priority Socio-Ecological Production Landscapes and Seascapes

## Project Components

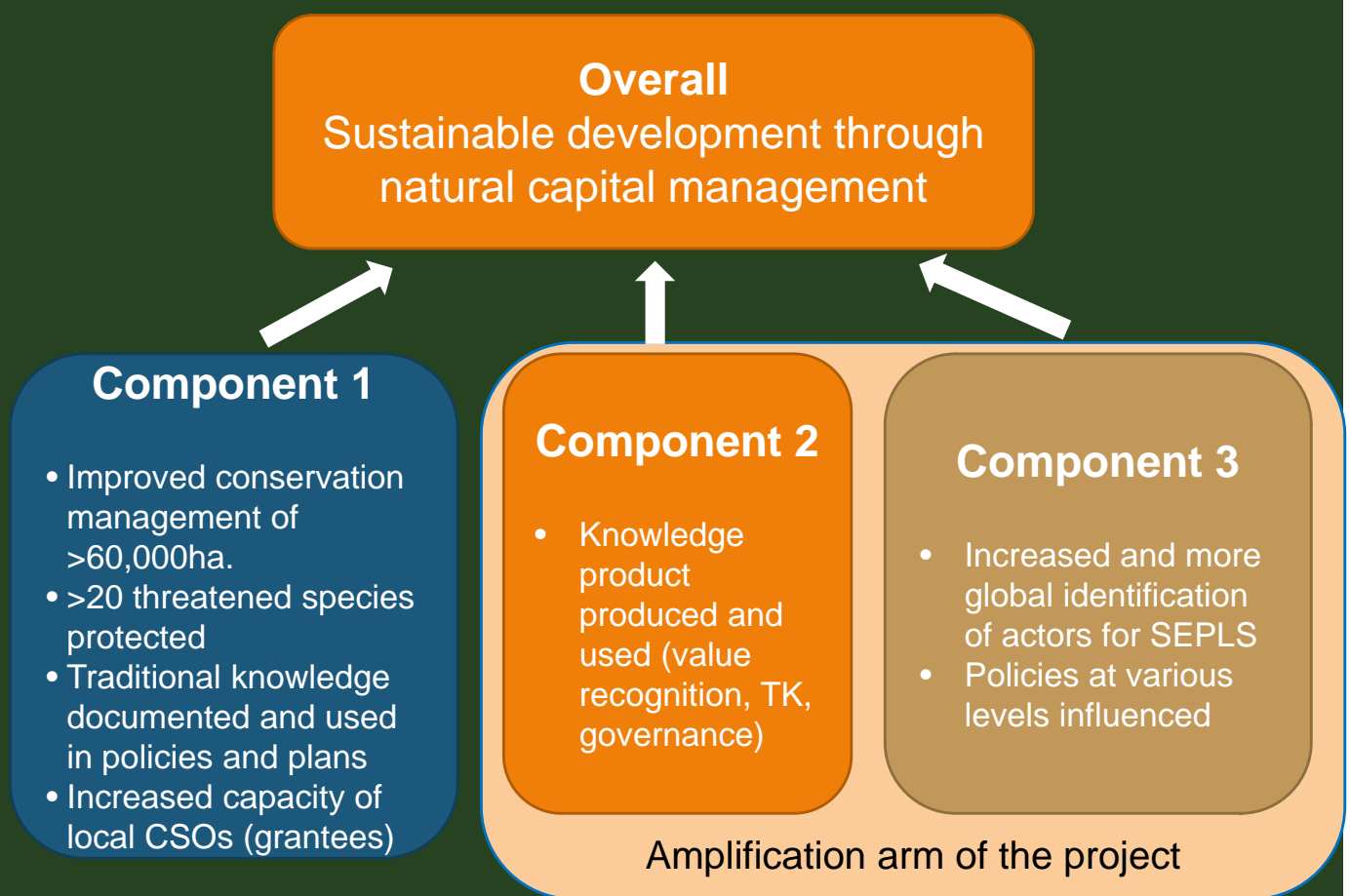


# Target Geographies (Component 1)

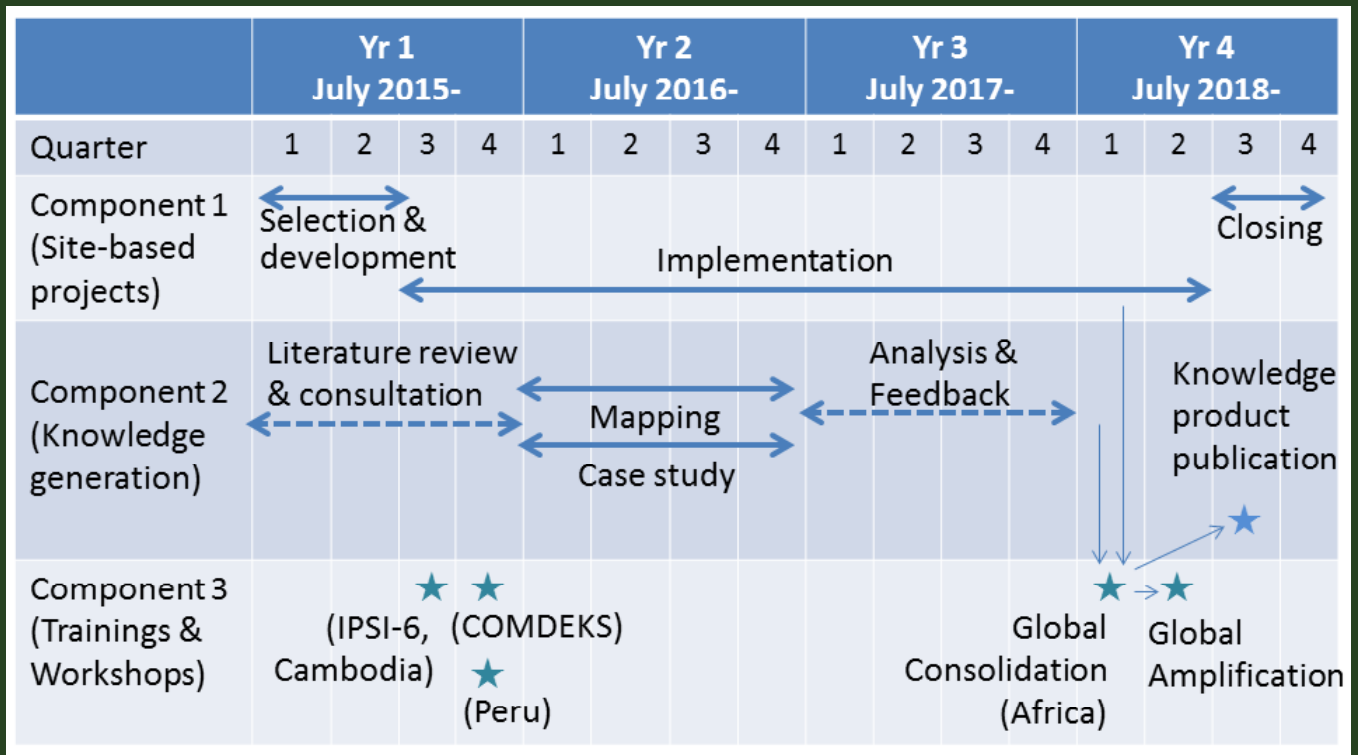


Criteria: Global biodiversity importance; absorptive capacity on the ground; Executing Agency's field capacity; major presence of satoyama landscapes; incremental impact and amplification; and eligibility for GEF grants

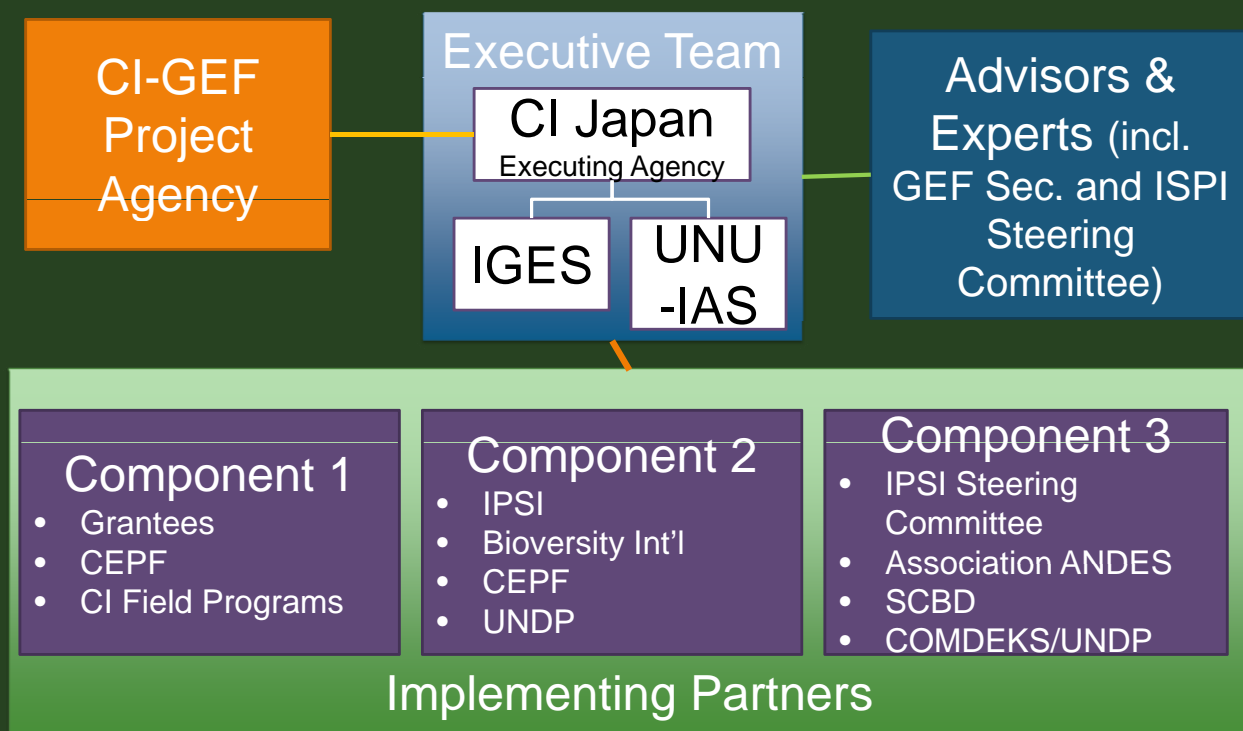
## Expected Outcomes




# Project Timeline



## Institutional Arrangement for Project Implementation







## 2020 and beyond - gaps and needs

- Strong success cases and good practices
- Scaling up at local and global level
- Leveraging *additional* additional resources to sustain impact
- Market recognition/ valuation for goods/ services produced from SEPLS



Thank you very much!