

Joint adelphi-IGES symposium

# Addressing Climate-Fragility Risks in Asia and Pacific

## Challenges and Opportunities for Achieving Sustainable Development

A project by:



Supported by:



# A New Climate for Peace

## Taking Action on Climate and Fragility Risks

A project by:



Financed by:

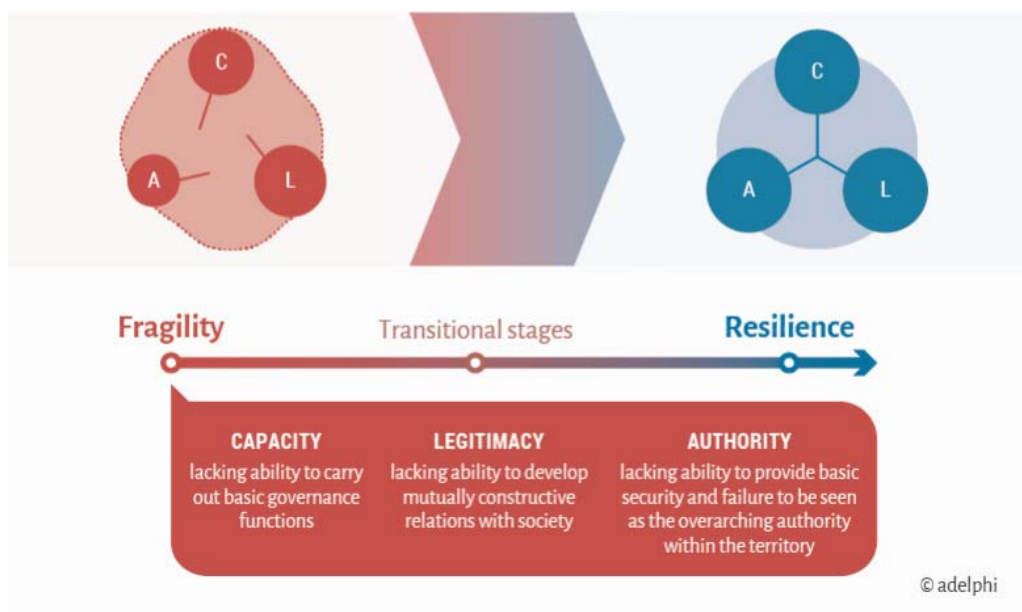


- **Mandate:**
  - Analyse climate–fragility risks and identify possible responses
  - Build a knowledge platform for the community of practice on climate–fragility risks
- **2015: G7 foreign ministers discussed and welcomed the report and tasked a high–level working group to:**
  - evaluate the recommendations of the report
  - initiate concrete steps towards preventative action
- **2016: G7 foreign ministers reaffirmed their commitment to prioritize prevention of climate–fragility risks**



3

## ❖ What is fragility?



4

## ❖ Climate change a global threat to security in the 21<sup>st</sup> century

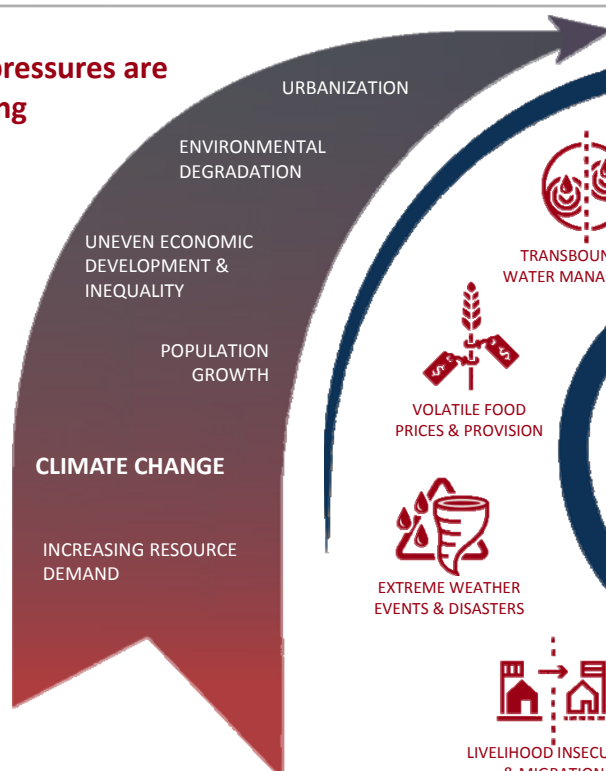
- Focus on risks and conflict dynamics that are already observable today.
- No simple causal link between climate change and state fragility.
- Climate change will converge with other pressures and shocks and increase the risks to the stability of states and societies.



Quellen: Asianet-Pakistan / shutterstock.com, Paco, Charles Roffey/flickr.com

## Seven compound climate-fragility risks

### 1. Global pressures are increasing



### 2. Creating 7 compound risks that threaten states & societies





## ❖ Climate-fragility risks

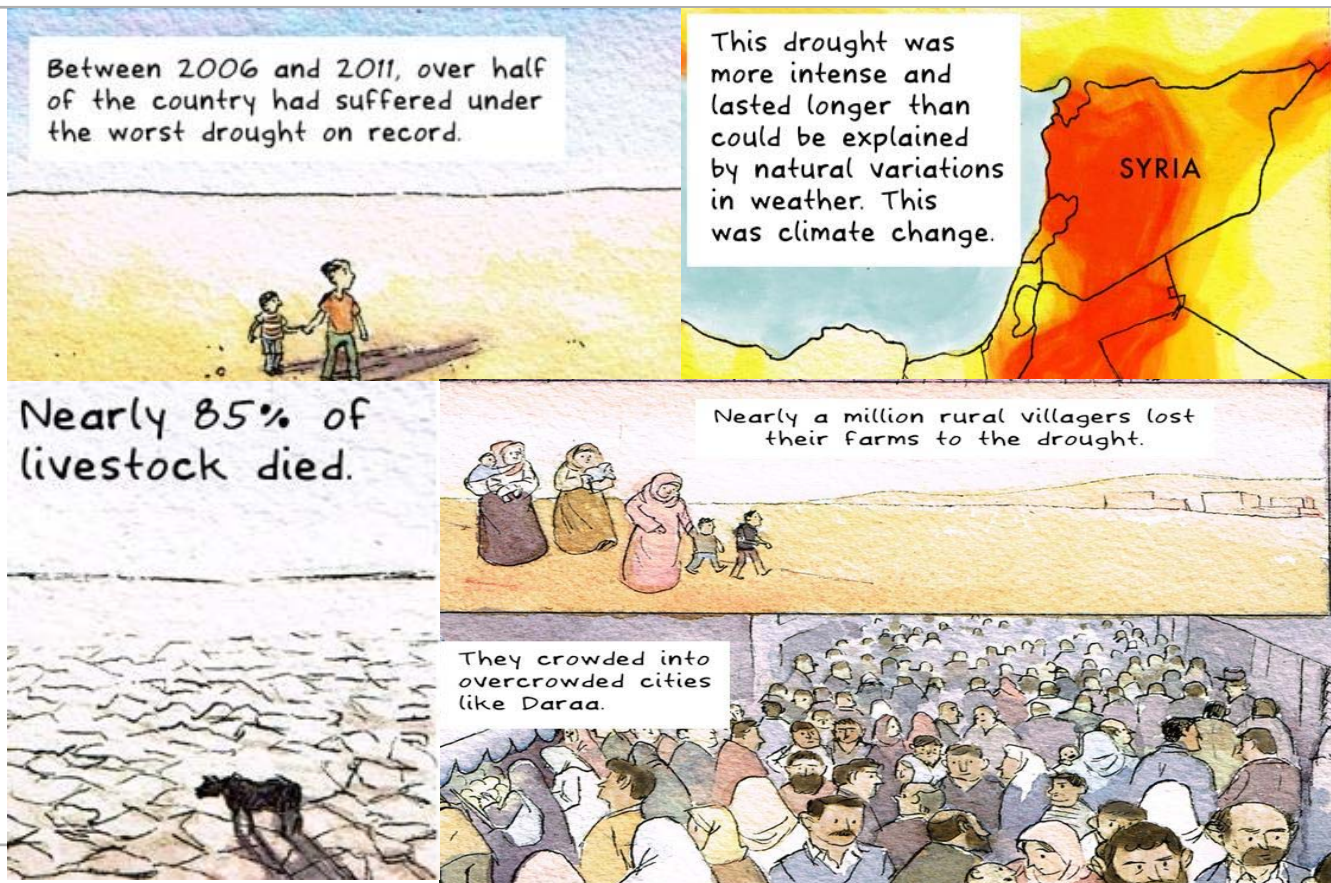
- Emerge through the interaction of climate change with other pressures and stressors
- They can contribute to different situations of fragility:
  - Political unrest and instability
  - Local conflicts and violence
  - Civil war and large-scale conflict
  - Transboundary disputes
- They can have regional and international impacts, for example through conflict spill-over or migration

7

## 7 compound climate-fragility risks



8



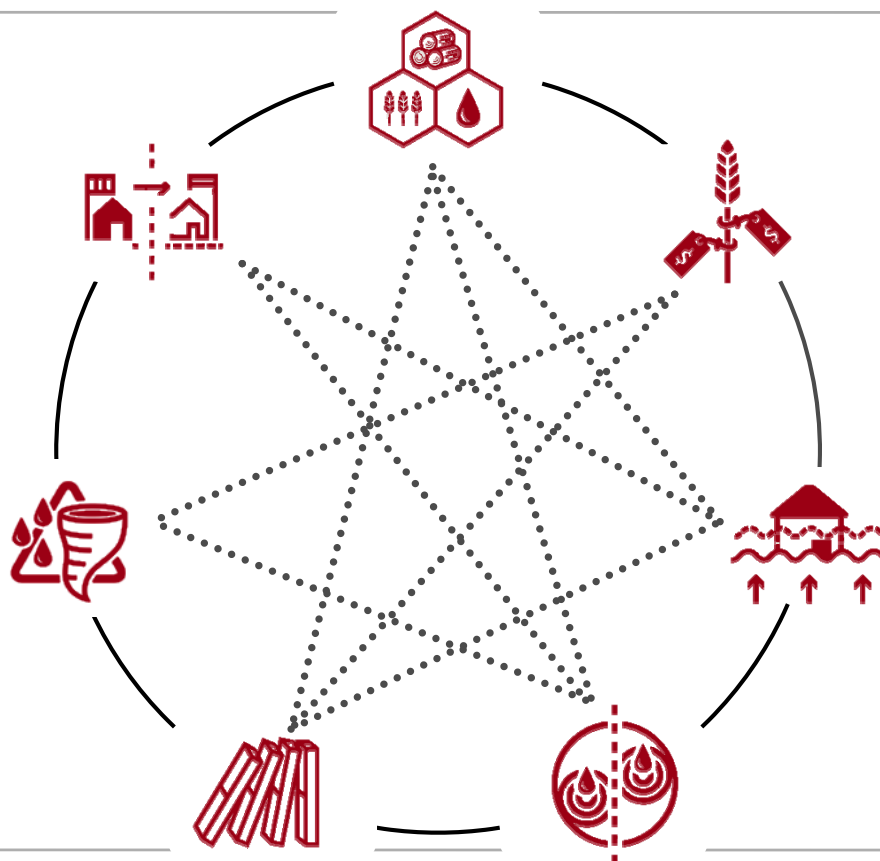
9

## ❖ Flooding in Thailand 2011

- Strongest monsoon rains in 30 years, 2 million people across 26 provinces were affected
- Politically already fragile situation, protests against the government since 2008, new government in power
- Reaction and aid was perceived as not transparent and unfair
- Protest break out and continue until the coup in 2014



Quelle: dany13/flickr, European Commission/flickr



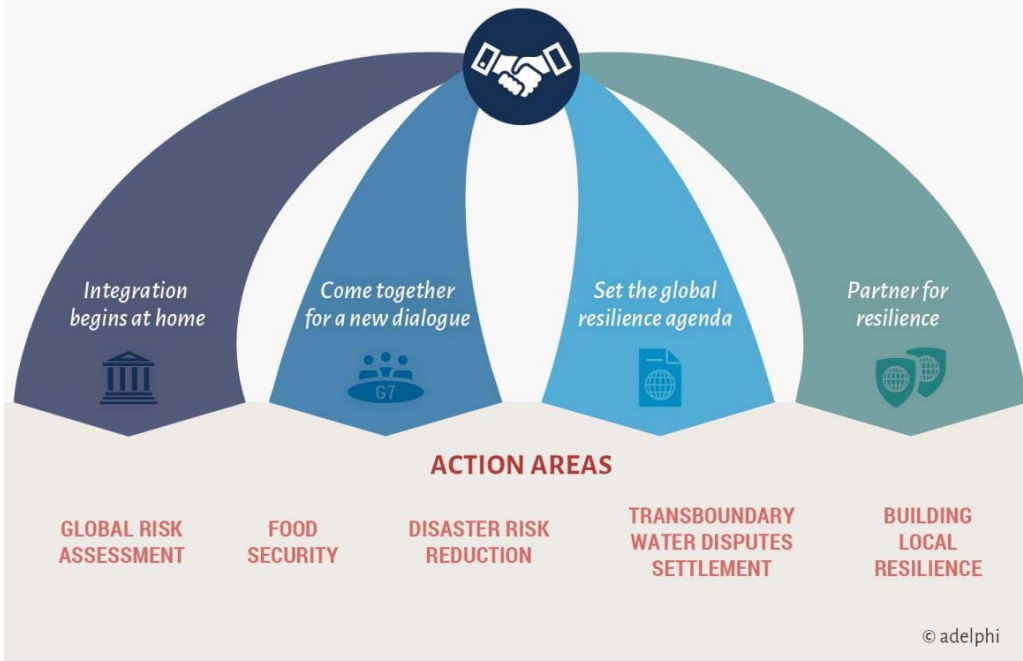
❖ Complex risks need integrated answers:



- Break down sectoral barriers and integrate policies and approaches across key sectors and communities
- Resilience can provide a common goal to work towards
- Opportunity to realise synergies and co-benefits



## Recommendations A new commitment for resilience



**Lukas Rüttinger**  
Senior Projektmanager  
ruettinger@adelphi.de twitter @LRuettinger

adelphi

Caspar–Theyss–Strasse 14a  
14193 Berlin

T +49 (0)30–89 000 68–0  
F +49 (0)30–89 000 68–10

www.adelphi.de  
office@adelphi.de