



GEF-Satoyama
Project



GEF- Satoyama Project

ISAP 2016

Yasushi Hibi

Managing Director,
CI Japan

Chair, Executing Team,
GEF-Satoyama Project



CONSERVATION
INTERNATIONAL



GEF-Satoyama Project

Mainstreaming biodiversity conservation and sustainable management in priority Socio-ecological Production Landscapes and Seascapes

□ **Project Vision:** **Society in harmony with nature**, with sustainable primary production sector based on traditional and modern wisdom, and making significant contributions to global targets for conservation of biological diversity

□ **Project Objective:** To **mainstream conservation and sustainable use of biodiversity and ecosystem services**, while improving human well-being in priority Socio-Ecological Production Landscapes and Seascapes

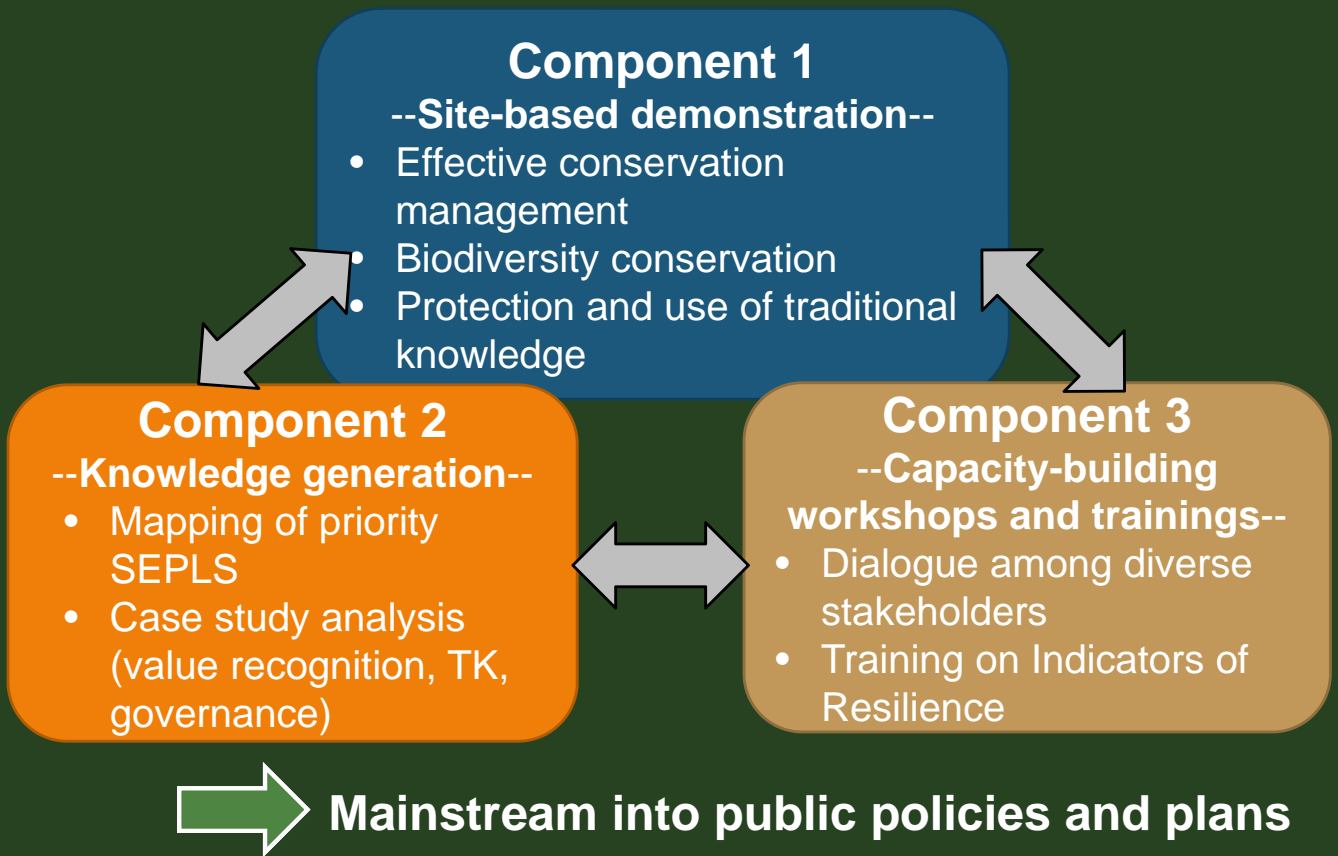


GEF-Satoyama Project

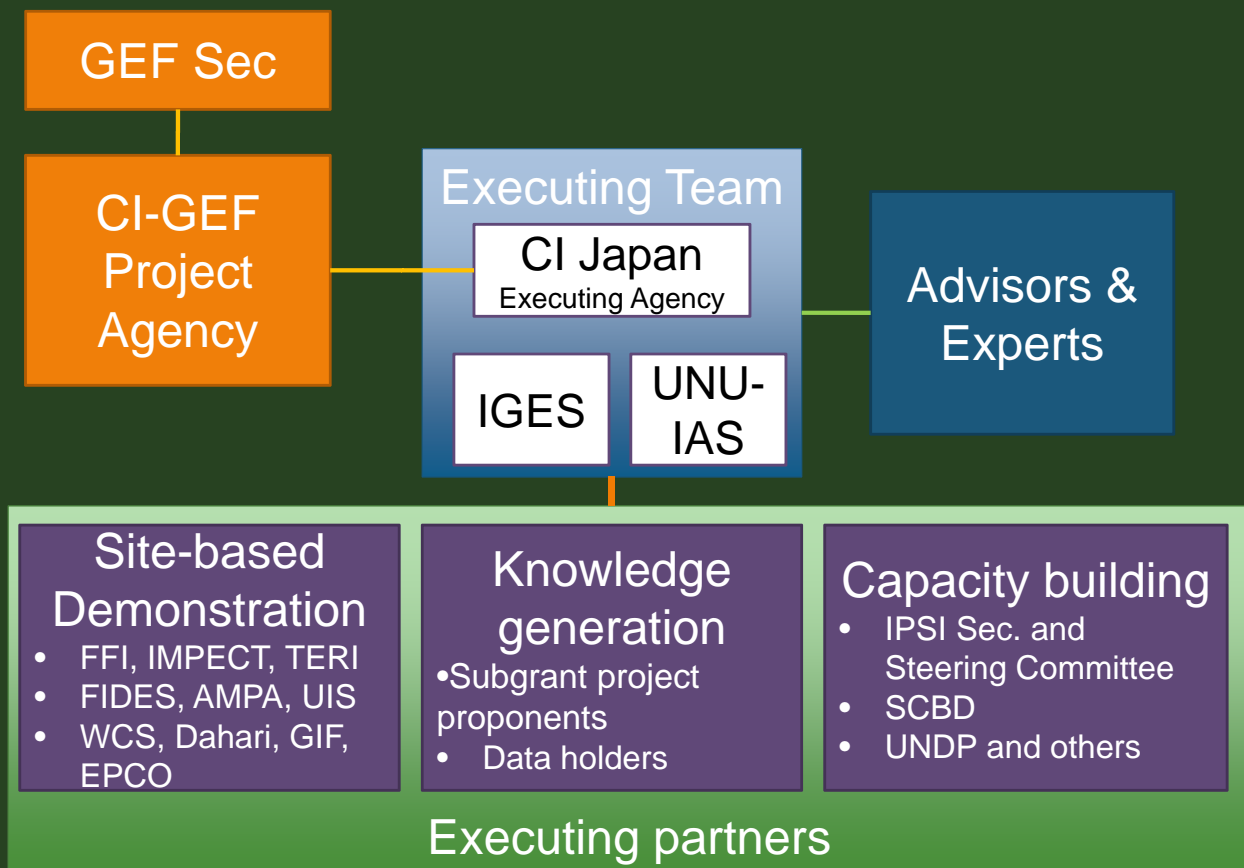
CONSERVATION
INTERNATIONAL



Project Components



Institutional Arrangement



10 site-based projects

The Energy and Resources Institute (TERI)

Fauna & Flora International (FFI)

Green Island Foundation (GIF)

Wildlife Conservation Society (WCS)

Fundación para la Investigación y Desarrollo Social (FIDES)

Universidad Industrial de Santander (UIS)

Inter Mountain Peoples' Education and Culture in Thailand Association (IMPECT)

Dahari

Environnemental Protection & Conservation Organisation (EPCO)

Asociación Amazónicas por la Amazonía (AMPA)

GEF Satoyama Project

Expected Outcomes

Overall
Society in harmony with nature

Grants to site-based projects

- Improved conservation management of >60,000ha.
- >20 threatened species protected
- Traditional knowledge documented and used in policies and plans

Knowledge generation

- A map of priority SEPLS
- Having SEPLS values recognized
- Protecting and using TK
- Improving governance

Capacity building

- Increased and more global recognition of SEPLS
- Policies at various levels influenced
- Gender mainstreaming

Amplification arm of the project

Aichi Biodiversity Targets

The Project is relevant and contribute to the achievement of:

ABT 5: Reducing habitat loss

ABT 7: Sustainably managed agriculture, aquaculture and forestry

ABT 11: Protected areas; effective management and connectivity

ABT 12: Prevention of species extinction

ABT 14: Ecosystem restoration

ABT 15: Ecosystem resilience and carbon stocks for CC mitigation and adaptation

ABT 18: Traditional knowledge

ABT 19: Knowledge and science base

ABT 20: Resource mobilization



GEF-Satoyama Project

Sustainable Development Goals & Biodiversity

(source: SCBD)

1. End poverty in all its forms everywhere		Targets 1.4; 1.5; 1.a; 1.b
2. End hunger, achieve food security and improved nutrition, and promote sustainable agriculture	Targets 2.4; 2.5	Targets 2.1; 2.3; 2.a; 2.b
3. Ensure healthy lives and promote well-being for all at all ages		Targets 3.3; 3.4; 3.8; 3.9; 3.b; 3.d
4. Ensure inclusive and equitable quality education and promote life-long learning opportunities for all		Targets 4.5; 4.7
5. Achieve gender equality and empower all women and girls		Targets 5.1; 5.5; 5.a; 5.c
6. Ensure availability and sustainable management of water and sanitation for all	Target 6.6	Targets 6.1; 6.3; 6.4; 6.5; 6.a; 6.b
7. Ensure access to affordable, reliable, sustainable, and modern energy for all		Target 7.a
8. Promote sustained, inclusive and sustainable economic growth, full and productive employment and decent work for all	Target 8.4	Targets 8.2; 8.3; 8.5; 8.9
9. Build resilient infrastructure, promote inclusive and sustainable industrialization and foster innovation		Targets 9.1; 9.4; 9.a; 9.b
10. Reduce inequality within and among countries		Targets 10.2; 10.4; 10.a; 10.b
11. Make cities and human settlements inclusive, safe, resilient and sustainable	Targets 11.4; 11.7; 11.a	Targets 11.1; 11.3; 11.5; 11.6; 11.b; 11.c
12. Ensure sustainable consumption and production patterns	Targets 12.2; 12.4; 12.8	Targets 12.1; 12.5; 12.7; 12.a; 12.b
13. Take urgent action to combat climate change and its impacts		Targets 13.1-13.3; 13.a; 13.b
14. Conserve and sustainably use the oceans, seas and marine resources for sustainable development	Targets 14.1-14.6; 14.c	Targets 14.7; 14.a; 14.b
15. Protect, restore and promote sustainable use of terrestrial ecosystems, sustainably manage forests, combat desertification, and halt and reverse land degradation and halt biodiversity loss	Targets 15.1-15.9; 15.a-15.c	
16. Promote peaceful and inclusive societies for sustainable development, provide access to justice for all and build effective, accountable and inclusive institutions at all levels		Targets 16.3; 16.4; 16.6; 16.7; 16.8; 16.10; 16a; 16.b
17. Strengthen the means of implementation and revitalize the global partnership for sustainable development		Targets 17.2-17.4; 17.6-17.11; 17.14-17.19

SUSTAINABLE DEVELOPMENT GOALS

17 GOALS TO TRANSFORM OUR WORLD



 Specifically addressed Indirectly addressed



<http://gef-satoyama.net/>



- HOME
- PROJECT COMPONENTS
- SUBGRANT PROJECTS
- RESOURCES

GEF-Satoyama Project

Mainstreaming Biodiversity Conservation and Sustainable Management in Priority Socio-ecological Production Landscapes and Seascapes

"GEF-Satoyama Project" aims to achieve societies in harmony with nature, with sustainable primary production sector based on traditional and modern wisdom, and making significant contributions to global targets for conservation of biological diversity.

While protecting pristine natural areas and other high conservation value areas continue to be important, global conservation of biodiversity will not be achieved without the sustainable management of areas in which people and nature interact. Production landscapes and seascapes refer to the space in which primary industry activities (agriculture, forestry and fisheries) take place in general. Among the production landscapes and seascapes, those that integrate the values of biodiversity and social aspects harmoniously with production activities, such that production activities support biodiversity and vice versa, are termed the socio-ecological production landscapes and seascapes (SEPLS), the focus of this project. This project intends to address the barriers that SEPLS faces globally, such as insufficient recognition of their values and dynamic nature and weak governance, and contribute to the achievement of multiple Aichi Biodiversity Targets and Sustainable Development Goals.

The GEF-Satoyama Project is funded by the Global Environment Facility (GEF), implemented by Conservation International's CI-GEF Project Agency and executed by Conservation International Japan in cooperation with the United Nations University Institute for the Advanced Study of Sustainability (UNU-IAS, the Secretariat of the International Partnership for the Satoyama Initiative) and Institute for Global Environmental Strategies (IGES).

NEWS

2016.06.20 [Project website renewed with its new logo](#)

[▲ Archives](#)

[▲ PageTop](#)



© 2016 Conservation International

[CONTACT](#) | [PRIVACY POLICY](#) | [TERMS OF USE](#)