

# Introduction to the International Partnership for Satoyama Initiative (IPSI)

Noriko Moriwake  
UNU-IAS



## Satoyama Initiative

- A global effort to realize “societies in harmony with nature”
- Promotes revitalization and sustainable management of “Socio-ecological Production Landscapes and Seascapes” around the world



# International Partnership for the Satoyama Initiative (IPSI)

- 190 member organizations (gov't, NGO, private sector, academic, etc.) all over the world
- Promotes networking and collaboration



## IPSI's framework to contribute to global agendas



### *Relevant global-scale agendas*

- *SDGs*
- *Aichi Biodiversity Targets*
- *IPBES*

### *IPSI Strategy*

- *Vision: "Societies in Harmony with Nature"*
- *Mission*
- *Objectives*

### *IPSI Plan of Action*

- *Priority Actions*
- *Mechanisms to Implement*
- *Monitoring, Reporting and Evaluation*

# What are the function of IPSI?

## Organizing Event



Global Conference



Regional Workshop



Side-events at related conferences



Others

## Information Platform



- To collect and disseminate information from IPSI members globally through IPSI website
- Information can be used as for research and publication
- Provide opportunity to present at broad range of relevant events and meetings

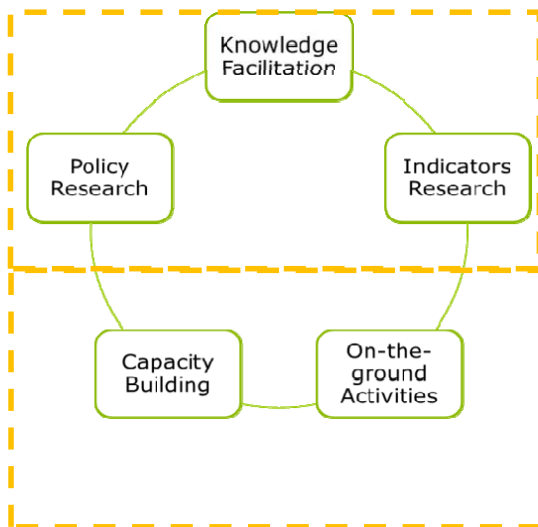
## Collaborative Activity



- To strength collaboration and synergy among IPSI member organizations

# What are the activities through IPSI?

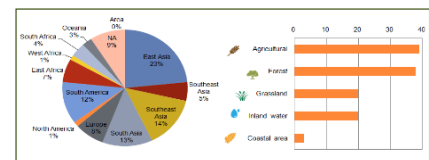
Enhance the understanding & raise awareness of the importance of SEPLS



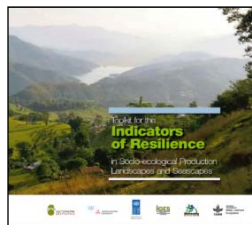
Promote the proper management & sustainable use of SEPLS



Publication



Case study collection & Analysis



Indicator research & development



Resource Mobilization



On-the ground activity





# Satoyama Development Mechanism, SDM

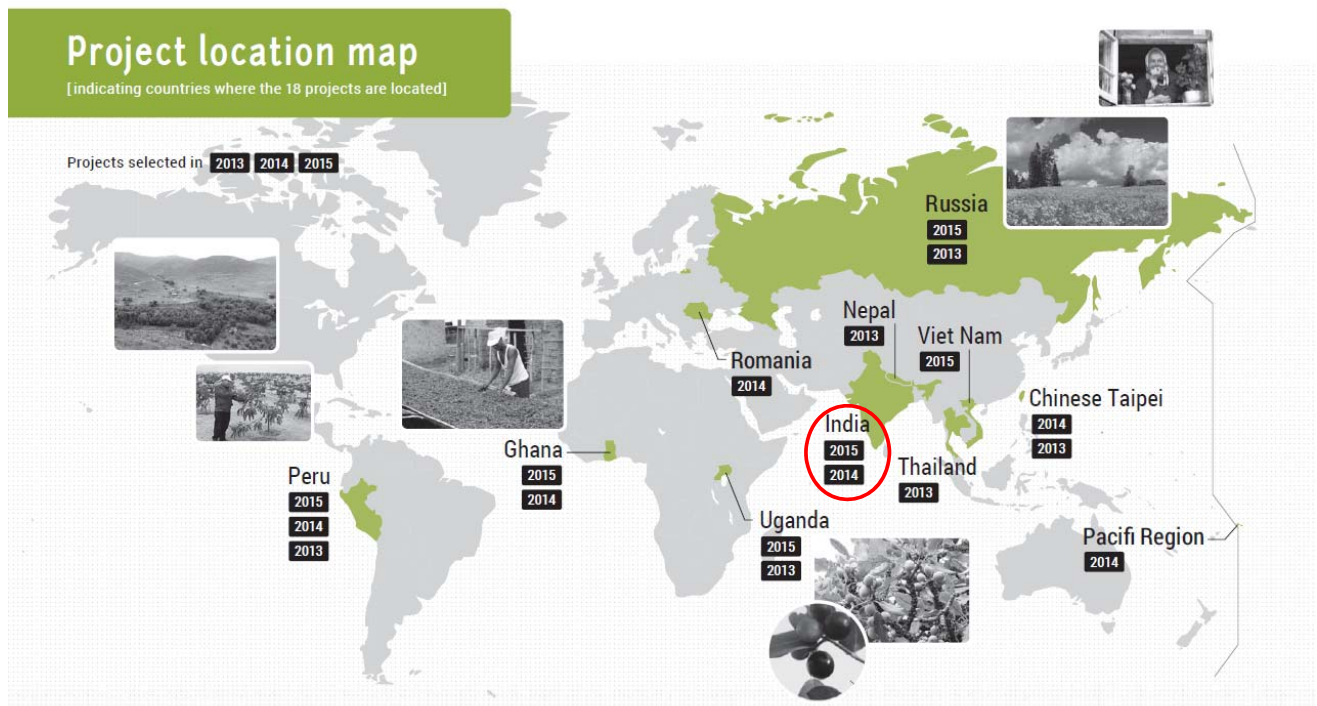


- Seed funding mechanism collaboratively operated by UNU-IAS, the Ministry of the Environment of Japan, and IGES.
- Established in 2013 and 18 projects have been supported so far.
- Seed funding to promising projects (up to USD 10,000)

Community Field-based Project Implementation	1	2	Research activity
Organizing meetings, workshops, conferences	3	4	Capacity Building/ Outreach activity



# Satoyama Development Mechanism, SDM





GEF-Satoyama  
Project

**Project Objective:**

To mainstream conservation and sustainable use of biodiversity and ecosystem services, while improving human well-being in priority socio-ecological production landscapes and seascapes in target areas of Asia, Africa and Latin America.

**Budget:**

US\$ 2 mill. in total (2015-2018)