

Global perspective and activities of UN Environment for Sustainable Development

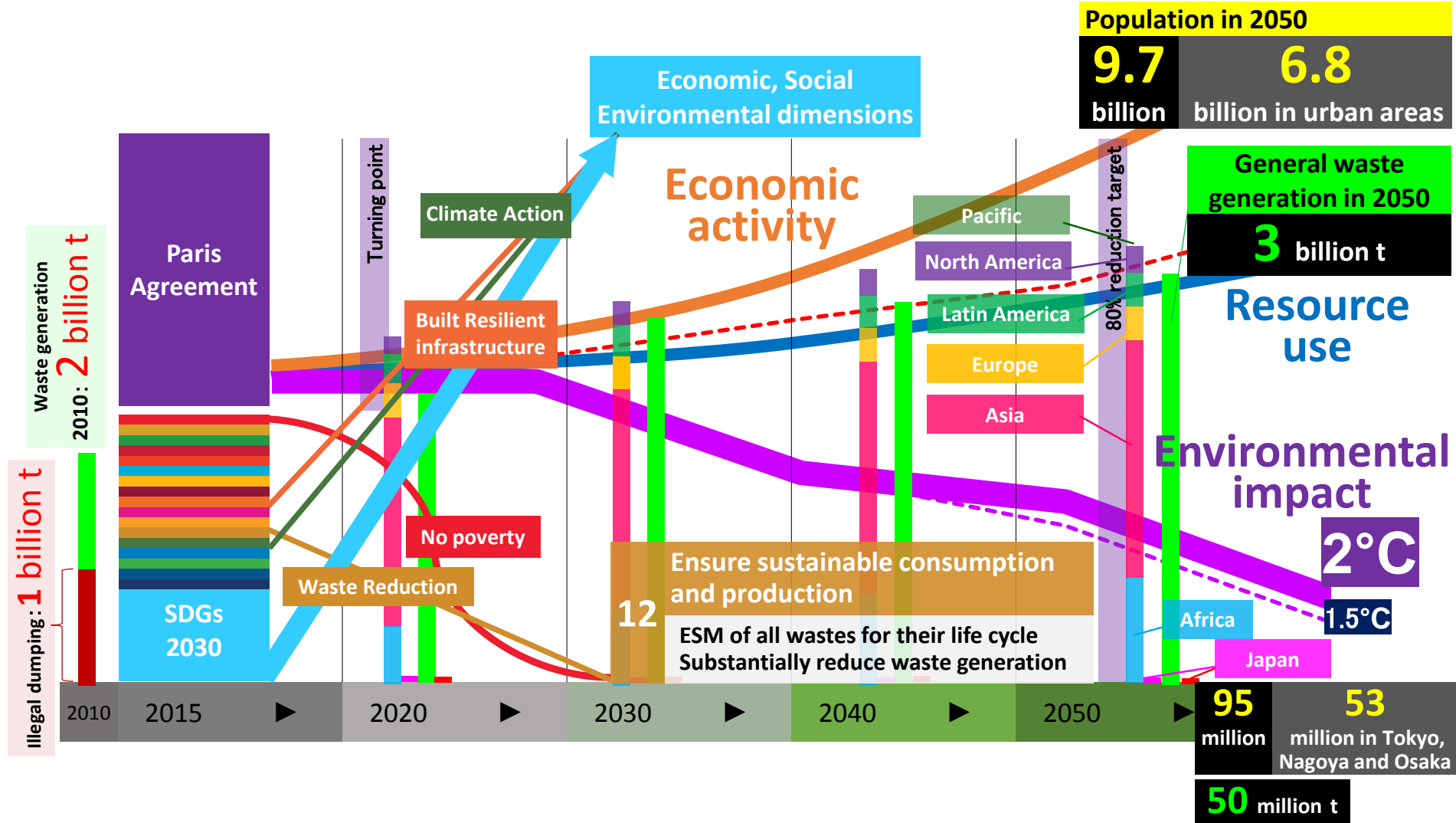
United Nations Environment Programme

Shunichi Honda (PhD), International Environmental Technology Centre, Economy Division

Toward Sustainable Consumption (General Waste)

Urbanization in 2050		
60-80%	75%	50%
GHGs emission	Natural resource use	Waste generation
on the Earth		

Population in 2050	
9.7 billion	6.8 billion in urban areas



Thank you



Shunichi Honda (PhD)
International Environmental Technology Centre
Chemicals and Waste Branch
Economy Division

www.unep.org
<http://web.unep.org/ietc>