

# The Sustainable Management of SEPLS and Mainstreaming of Biodiversity Conservation in the State of Nagaland, India

PIA SETHI

Centre for Biodiversity & Ecosystem Services  
Forestry and Biodiversity Division  
The Energy and Resources Institute (TERI),  
India

July 2017



# Presentation Outline

- Introduction to TERI
- Overview of the SEPL
- Role of local government in SEPLS
- Pressures in the SEPLS
- Role of Community-Conserved Areas
- TERI's GEF-Satoyama project
- Issues of sustainability
- The role of subnational (State) Government
- Conclusion

# Introduction to TERI

- ✚ **TERI established in 1974**, initial focus on documentation & information dissemination. Research activities initiated towards the end of 1982.
  - ✚ Now the largest developing-country institution working towards sustainability
  - ✚ **Ranked 2<sup>nd</sup>** in global climate think tanks
- 

## Vision and Mission

### Vision

- ✚ Creating Innovative Solutions for a Sustainable Future

### Mission

- ✚ Tackle issues related to Indian society, and the world at large, and develop innovative and cost-effective solutions.
- ✚ Enhance networking for sustainable interventions.
- ✚ Realize potential for national and international leadership as a knowledge-based agent of change in the fields of energy, environment, other natural resources, and sustainable development.
- ✚ Inspire and reach out to diverse stakeholders for realizing a shared vision of global sustainable development.



# Forestry & Biodiversity in TERI

## Capacity-building and dissemination

The Group regularly organizes workshops and training programmes on several aspects of forestry at various levels, ranging from senior IPS officers to local communities. Themes that have been covered recently include valuation of ecosystem services, instruments for carbon based forest-financing and the economic contribution of the forestry sector. The professionals of the Group have over 100 research publications to their credit.

### Key projects

- ❖ Mid-Career Training of IPS Officers (Phase IV) (Indira Gandhi National Forest Academy, Dehradun)
- ❖ Regional workshops on REDD Plus (Ministry of Environment and Forests, Government of India)



## Major publications

### Books

- ❖ REDD Plus and Sustainable Forest Management (2013)
- ❖ Medicinal Plant Wealth of India: A comprehensive Review of Selected Species (2011)
- ❖ Community-based Biodiversity Conservation in the Himalayas (2011)

### Policy Papers

- ❖ Forest governance and implementation of REDD+ in India
- ❖ Institutional framework for implementing REDD+ in India
- ❖ Conservation of biodiversity and ecosystem services by REDD+ in India
- ❖ International REDD+ architecture and its relevance for India
- ❖ Livelihood of local communities & forest degradation in India: Issues for REDD+
- ❖ Methodology for assessing carbon stock for REDD+ project in India

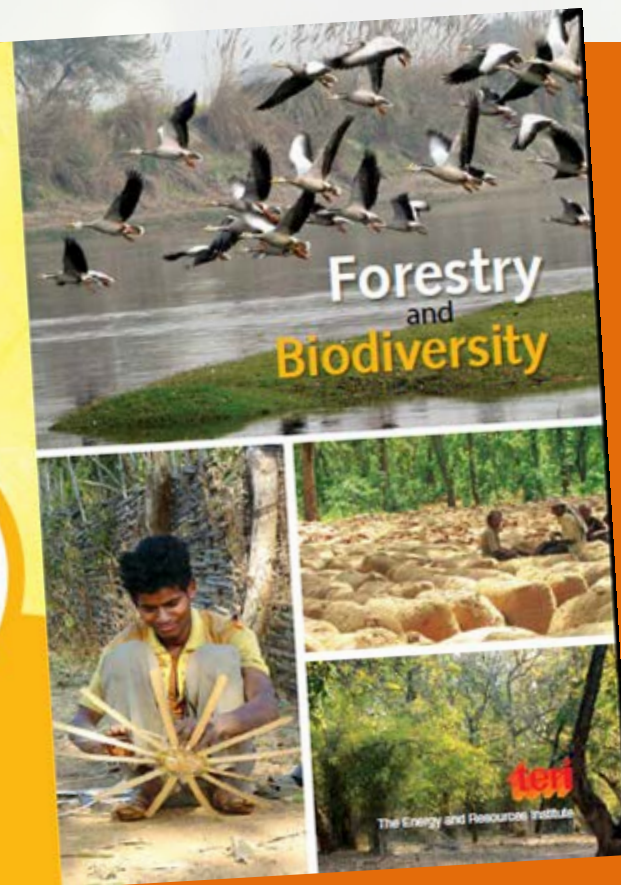
## Major events

- ❖ CRD - COP XI Side Event: International REDD Plus Architecture and its Relevance for Developing Countries (2013)
- ❖ CRD - COP XI Side Event: Operationalising Nagoya Protocol in South Asia (2013)
- ❖ Delhi Sustainable Development Summit Special Event: REDD Plus - South Asia Perspective (2013)
- ❖ Delhi Sustainable Development Summit Special Event: Forest Governance in the context of FPA and PESA (2013)
- ❖ Delhi Sustainable Development Summit Special Event: Business Opportunities in Himalayan Ecosystem Management (2012)
- ❖ Delhi Sustainable Development Summit Special Event: Realising the MDGs: the Forests-Poverty Link (2012)
- ❖ Uttarakhand Sustainable Development Summit: Sustainable Development, Climate Change and Natural Resources Management: Status, Issues and Way Forward (2008)

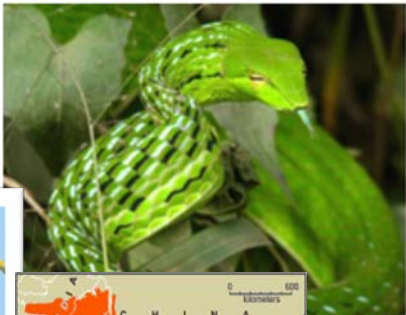


## Contact

Area Convenor  
Forestry and Biodiversity Group  
TERI, IHC Complex  
New Delhi 110003  
Phone: 2468 2100 or 4150 4900  
Email: mailbox@terires.in



# The Indo-Burma and (Eastern) Himalaya biodiversity hotspots



- Second highest number of bird species in the world
- Indomalayan and Palearctic realms
- **353 new species** discovered between 1998-2008
- **25% of India's** forest cover



# Role of local self government in SEPLS of Nagaland



## Village Republic

- Village owns & governs its resources
- Plans development activities
- Maintains law and order,
- Delivers justice and secures defense

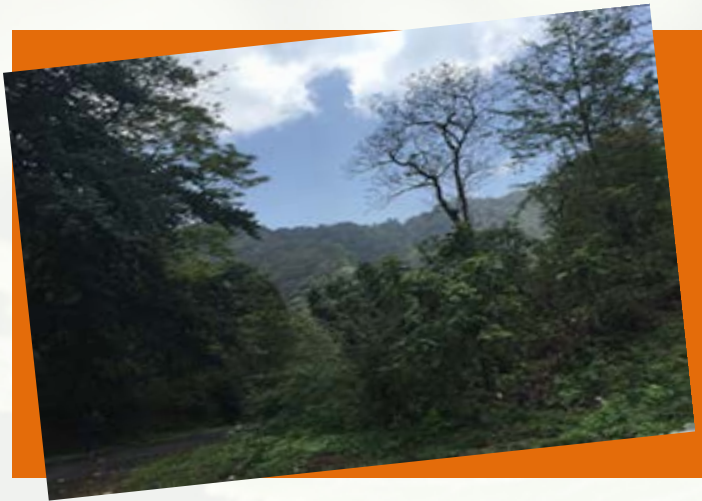
*Customary rights protected under Article 371 A of the constitution*

## Village Council

- Nagaland Village and Area Council Act, 1978-every recognised village must have a VC
  - members elected by villagers in accordance with the prevailing customary practices and as approved by State Government.
  - Hereditary village chiefs, the Gaon burrhas (GB), are ex-officio members with voting rights of the Village Councils.
- Village Development Board for rural development



# Local government in forest management



## Forests (Forests & Tree cover 80.5%, 36.6% under dense forests)

- 93% of natural habitats (largely forests) owned by individual clans, village, district councils
- Nagaland Village & Area Councils Act, 1978: grants Village Council powers & duties to (s.12 (1)) **'to supervise proper maintenance of forests'**
- Traditional conservation practices and
- folkloric traditions to protect biodiversity
- No separate budgetary allocations
- Nagaland Communitisation of Public Institution & Services Act of 2002
  - Onwership & management of education, health care, water, tourism and biodiversity conservation-delegation of powers & responsibilities to local government-Govt funds & technical advice

# Village-level forest management



- *Naga society presented a varied pattern of near-dictatorship and extreme democracy (V. Elwin, 1969)*
- In Naga society, chief or clans (e.g. Angami, Ao) predominate
- Village core of Sema society under control of a chief
- Selection of chiefs hereditary-elder sons leave village, youngest continues
- Village council decides where cultivation is carried out & chief allocates land for shifting cultivation to landless
- Shortening jhum cycles from 15-20 years to 7-9 years



# Ideal situation for effective management of SEPLS



- Tenurial security
- Community key decision makers
- Traditional wise-use practices & strong traditional governance institutions
- Control over use of ecosystem services
- Incentive to invest in conservation
- High social capital
- No need for external permission for activities



# Pressures and Issues



Population, increased by 64 per cent since 1961.

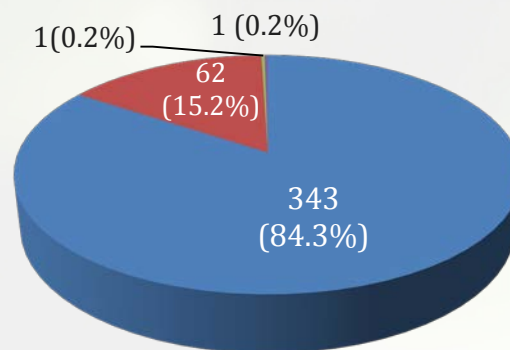
Out of total geographical area of 16579 sq. km. approximately 937 sq. km is cleared annually for shifting cultivation



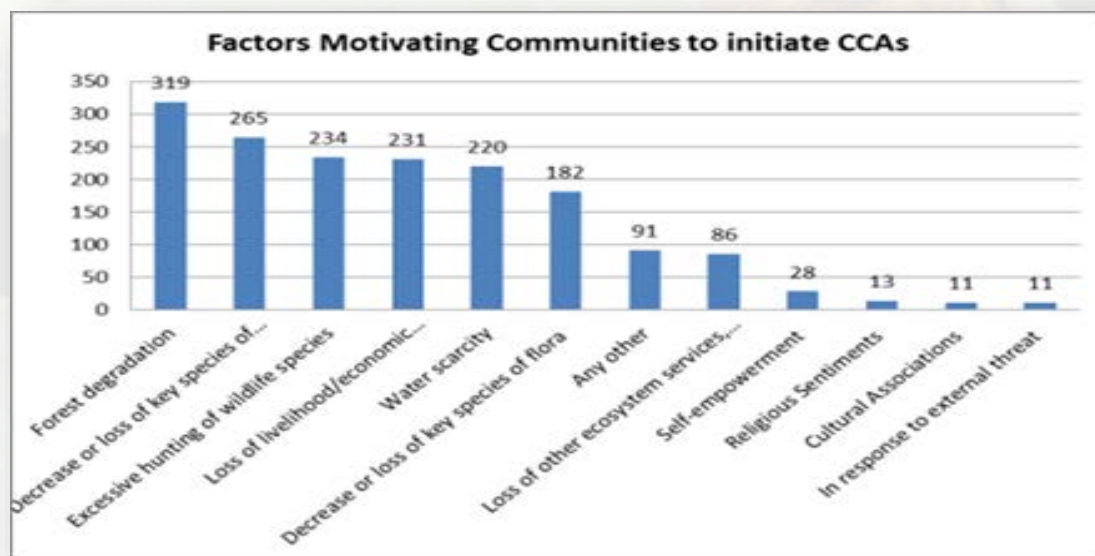
Evidence of decrease in jhum from 1.87 million in 2003 to 1.2 million hectares in 2005-06 (NEPED, 2011).

# Community-Conserved Areas as a strategy for conservation in SEPLS?

- 407 CCAs: one third of the total number of villages (1428 as per 2011 census data): 1700 sq. km
- 74% to arrest forest degradation. 65% loss of key wildlife species

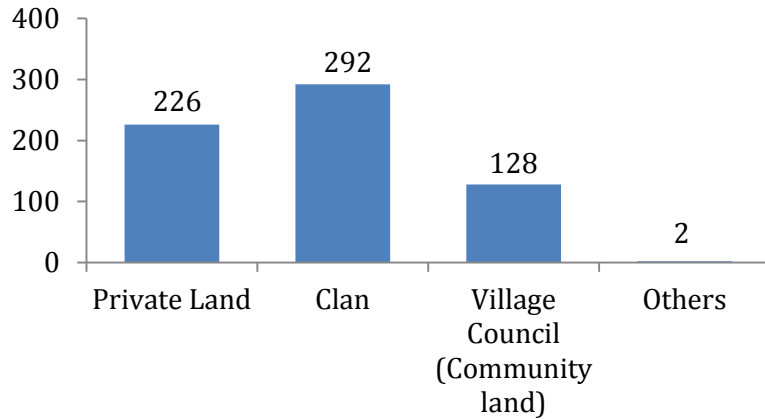


■ Self initiated      ■ Forest Department initiated  
■ Other Department initiated      ■ NGO initiated





# Challenges of CCAs



## Ownership patterns:

- Clans: 72%;
- Individuals: 56%
- Village councils: only 31%

- **Average size 500 ha:** little connectivity-only 18% part of a larger landscape network
- **81%** face challenges of providing alternative livelihoods
- **Conversion to CCAs:** opportunity cost (lost revenues from forest products, timber revenues)
- **58%** of the village councils reported facing financial constraints and **59%** reported incursions by timber mafia

# GEF-SATOYAMA PROJECT

*Mainstreaming Community-Conserved Areas for Biodiversity Conservation in Nagaland*





# The Objectives



## Support community-based conservation to

- Mobilise support for the formation of CCAs including larger networks in Zunheboto district
- Revive traditional conservation practices (e.g. hunting bans)
- Carry out ecological assessments of these CCAs and surrounding areas
- Provide training for community-based ecotourism initiatives
- Develop a state policy for CCAs





# Yet how to ensure sustainability?



- Erosion of traditional conservation practices
- Economic and demographic pressures
- Function as a network of protected areas- yet no funding source
- Important as a strategy against climate change (INDC goal)
- Network of CCAs across landscape to maintain viable corridors/links & populations
- Absence of enabling framework, financial outlays for CCAs

# Crucial role of subnational (State) governments

- Department of Environment and Forests: enforcement of central & state government regulations for movement of timber, protection and conservation of forests and biodiversity
- Policy support
- Funding facilitation
- Technical support
- Institutional strengthening
- Capacity building & program facilitation

# Government support for a policy on CCAs



- To buttress state recognition, support and funding of community-managed initiatives in Nagaland.



# A People's Biodiversity Register (PBR) of Village Sükhai, Zunheboto, Nagaland

Submitted to  
Department of Forests, Ecology, Environment &  
Wildlife of Nagaland  
Government of Nagaland



October 2015  
Project Code: J/15/11/17

## Documentation of Community Conserved Areas of Nagaland

Submitted to  
Department of Environment, Forests & Climate Change  
Government of Nagaland



teri

...towards global



teri

The Energy and Resources Institute

...towards global  
sustainable development

# Conclusion

- Local government system of resource management highly efficient
- But need for enhanced involvement of State government in supportive role
- Greater clarity in linkages of local & subnational government
- Funds specifically for
- Forest management





# Thank You

