

Circulating and Ecological Economy and The Satoyama Initiative

President, **Kazuhiko TAKEUCHI**

Institute for Global Environmental Strategies (IGES)

G20 Ministerial Meeting on Energy and Environment 2019

– Its Significance and Outlook –

31 July, 2019 11:30-13:00



ISAP 2019

持続可能なアジア太平洋に関する国際フォーラム
International Forum for Sustainable Asia and the Pacific

Global Agreements related to Sustainability



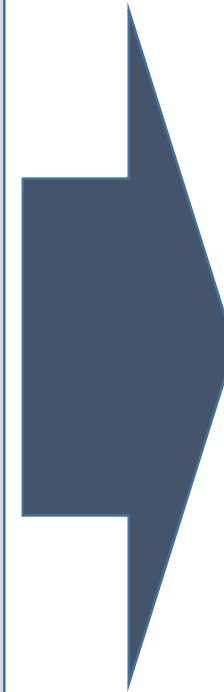
Adoption of
the Paris Agreement,
December 2015



Adoption of
the 2030 Agenda
and SDGs,
September 2015



Adoption of
the Sendai Framework
for DRR,
March 2015

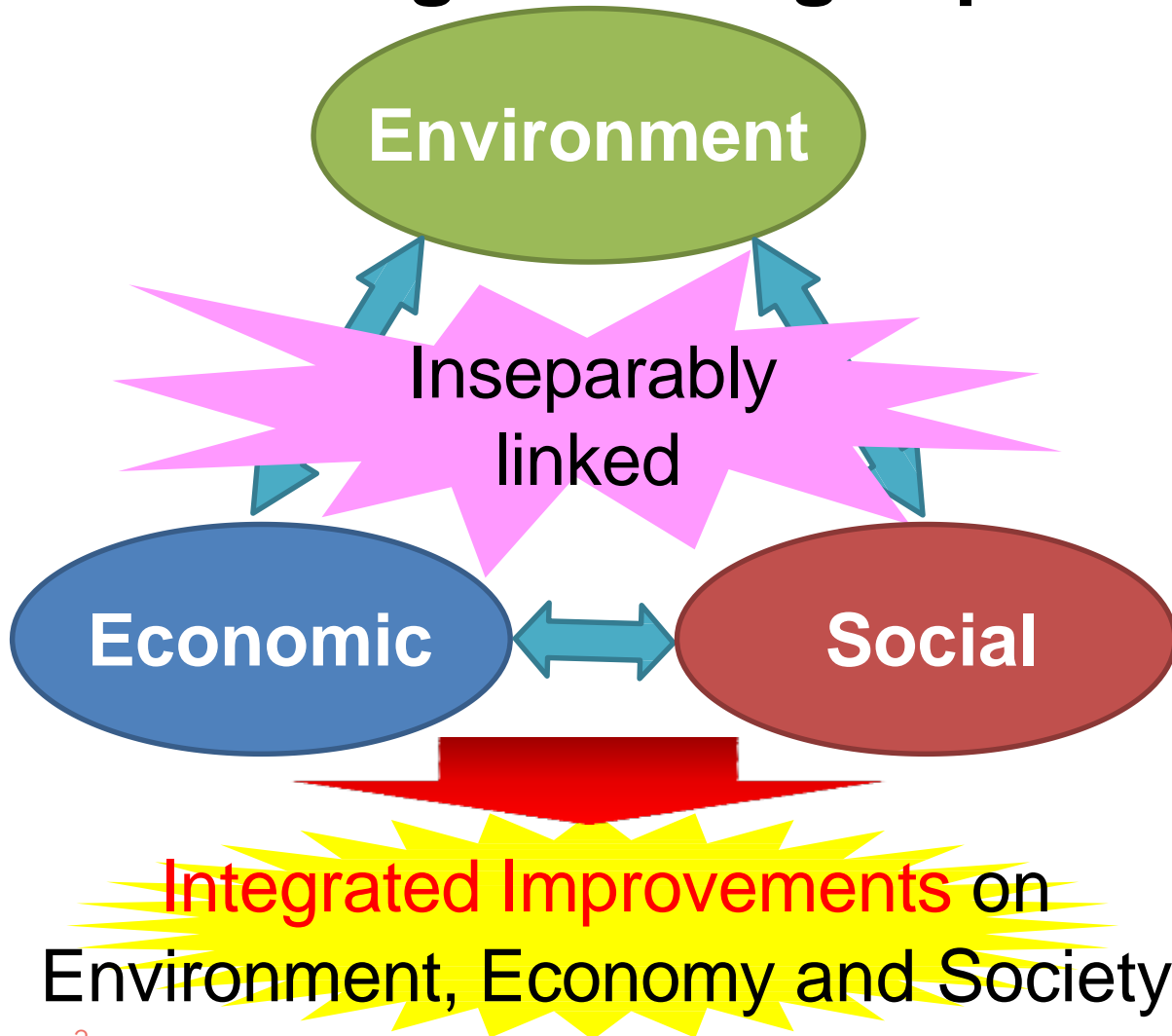


Need to take
**integrated
actions** towards
new sustainable
society

Need to be
**implemented
locally**

Japan's 5th Basic Environment Plan

Challenges Facing Japan



Basic Approach

- ◆ Utilizing the concepts of SDGs, realizing the **Integrated Improvements on Environment, Economy and Society**.
- ◆ Maximize the sustainable use of **regional/local resources** for improvements in economic and social activities.
- ◆ Promoting **Partnerships** with a wide range of stakeholders.

Regional/Local Circulating and Ecological Sphere (CES)

Integration of environmental, economic and social dimensions,
Integrated response to declining and aging population, Local revitalization
CES to achieve **integrated solution** for those local issues

SUSTAINABLE
DEVELOPMENT
GOALS




Exchange of People, Information, and Technologies
Connect to Global Communities

Smart Grid, Renewable Energy, Energy Saving
Decarbonization

Reduce, Reuse, and Recycle
Resource Circulation

<Rural> Natural Capital Interaction and Human Exchange <Urban> Produced Capital
Harmony with Nature
Safe and Secure Community (e.g. Eco-DRR, EbA)

 **United Nations**
Framework Convention on
Climate Change

 **UNEP** International
Resource Panel

 **Convention on**
Biological Diversity

 **Sendai Framework for Disaster Risk Reduction**
2015 - 2030

(IGES, 2019)

The Satoyama Initiative

◆ Promotes “**landscape and seascape approaches**” to biodiversity conservation and sustainable use:
Socio-Ecological Production Landscapes and Seascapes (SEPLS)

- ◆ Support **biodiversity** while providing humans with **goods and services** needed for their well-being.
- ◆ **Mutual benefits** between people and nature.
- ◆ **Dynamic mosaics** of habitats and land uses.
- ◆ Deeply linked to **local culture and knowledge**.



The International Partnership for the Satoyama Initiative (IPSI)



UNITED NATIONS
UNIVERSITY

UNU-IAS
Institute for the Advanced Study
of Sustainability

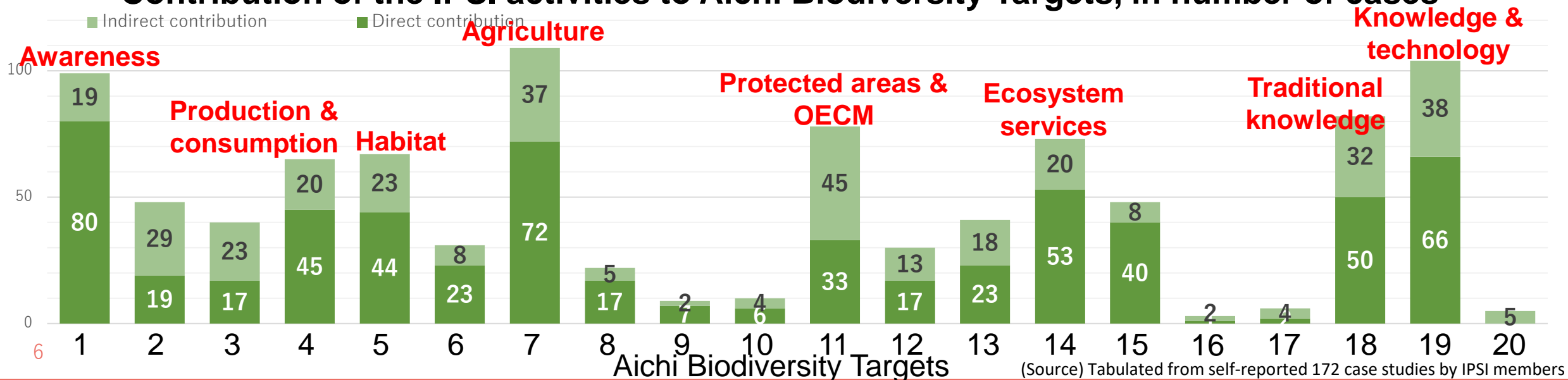
◆ Global platform to promote networking of SEPLS

- ◆ Launched at CBD/COP10 in Nagoya, 2010.
- ◆ 253 members among 69 countries/regions and 14 intergovernmental organizations as of June 2019.
- ◆ The secretariat in United Nations University Institute for the Advanced Study of Sustainability (UNU-IAS).



IPSI Global Conference (2018)

Contribution of the IPSI activities to Aichi Biodiversity Targets, in number of cases



IPSI's Engagements in International Processes

- ◆ Post-2020 global biodiversity framework
 - ◆ Asia-Pacific Regional Consultation Workshop (January 2019, Aichi-Nagoya)
 - conserving and sustainably using **biodiversity**
 - **mainstreaming** into production sectors
 - contributing to other effective area-based conservation measures (**OECD**)
 - achieving **multiple SDGs**
 - ◆ Thematic Consultation Workshop on landscape approaches (upcoming, September 2019)
 - **important ideas** for post-2020 framework
- ◆ Intergovernmental Science-Policy Platform on Biodiversity and Ecosystem Services (**IPBES**)
 - ◆ UNU-IAS became IPBES's strategic partner (July 2017)
 - ◆ IPBES and IPSI collaborate to produce a thematic review⁷ (SITR-5) on **Values associated with SEPLS**



Ecosystem-based Adaptation (EbA)

“The use of biodiversity and ecosystem services as part of an overall **adaptation strategy** to help people to adapt to the adverse effects of climate change” (CBD, 2009)

Coastal forests buffer coastal hazards



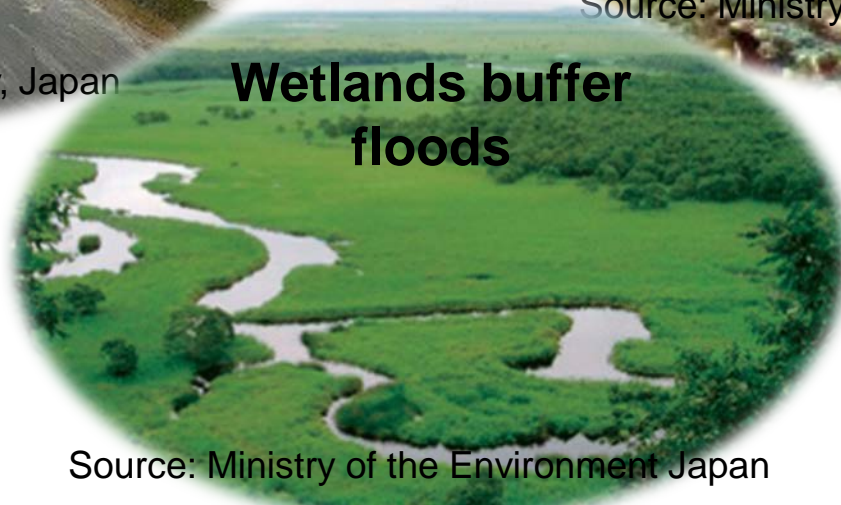
Source: Hamamatsu-city, Japan

Coral reefs
for coastal protection



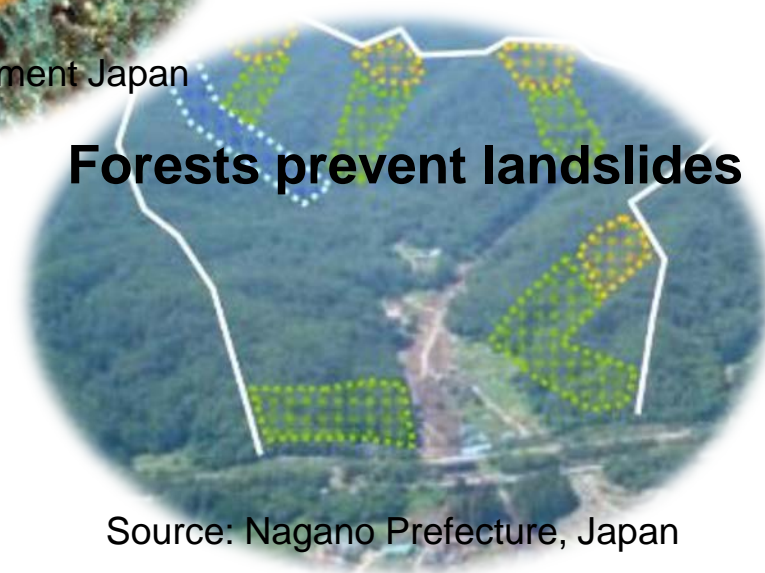
Source: Ministry of the Environment Japan

Wetlands buffer
floods



Source: Ministry of the Environment Japan

Forests prevent landslides

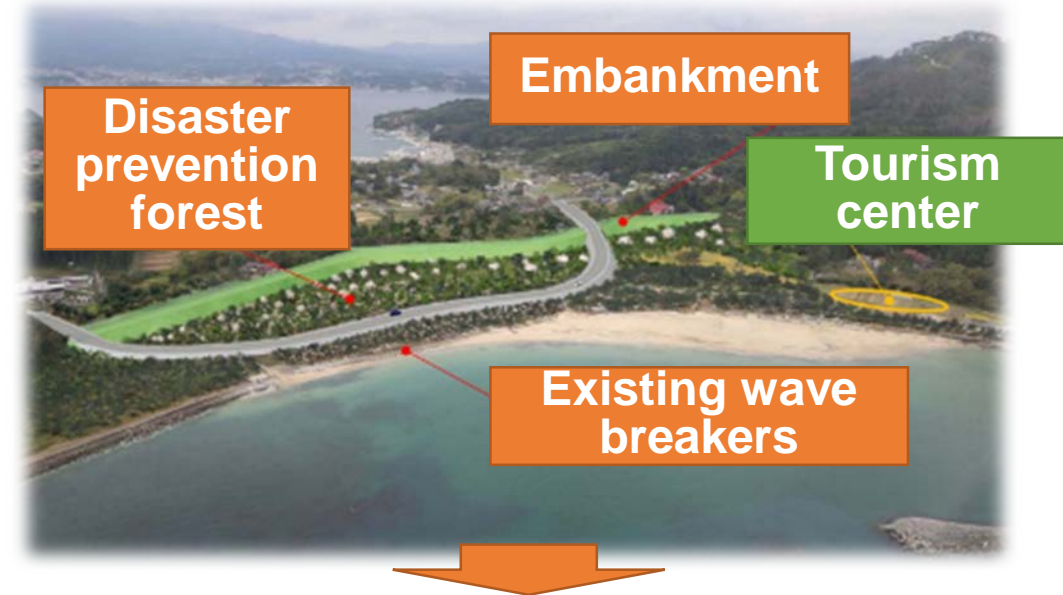


Source: Nagano Prefecture, Japan

Case Study of Kesennuma Oshima Island in the Sanriku Fukko (Reconstruction) National Park

Many **nature experience opportunities** and **tourism resources** were provided on the island before the Great East Japan Earthquake (GEJE).

Disaster prevention forest behind the coast of Tanakahama beach.



MOEJ redeveloped a center for nature experience programs near the beach and developed an **emergency evacuation route** to reduce tsunami risks.



Six Proposals for Future Policies towards Circular Economy and Society



- ◆ **Publication of T20 (G20 Think Tank Process) Policy Brief**
 - ◆ Capture the momentum of public attention on marine plastic pollution to raise political and social priorities.
 - ◆ Raise the ambition of policies incorporating **Extended Producer Responsibility (EPR)** by envisioning phasing out of single-use items and difficult-to-process products.
 - ◆ Policy support for a **business model**.
 - ◆ Facilitate local/community-based initiatives (**Circulating and Ecological Economy: CEE**).
 - ◆ Establish **regional mechanism for policy coordination and harmonization**.
 - ◆ Adopt a **new measurement of wealth and development** by incorporating planetary boundaries.

◆ Joint Statement “Threats to Marine Ecosystems and Conservation of the Marine Environment – with Special Attention to **Climate Change** and **Marine Plastic Waste**” received by Prime Minister Shinzo Abe of the Chair of G20 2019.

- ◆ Use of expert, **evidence-based advice**.
- ◆ Redoubling actions aiming to **reduce stressors** on marine ecosystems.
- ◆ **More recycling and energy efficient practices at national, city and local levels**.
- ◆ Capacity building for essential research infrastructures.
- ◆ Establishment of an **improved data storage** accessible to scientists globally.
- ◆ **Sharing of information** gained through research activities.

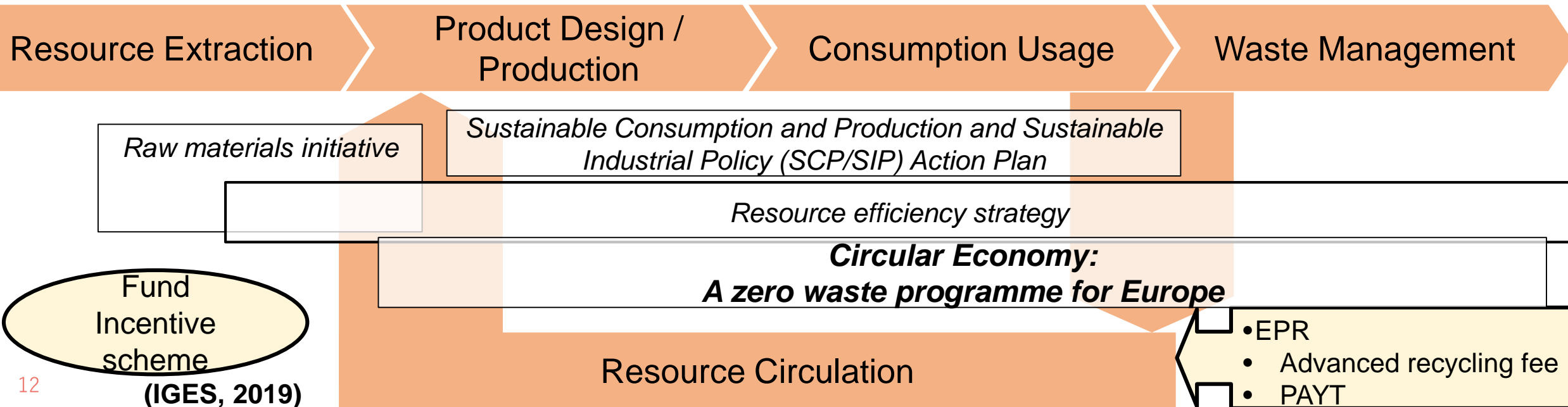


(Maldives. Photo by IGES)

Marine Plastic Issue as an Entry Point for CEE

- ◆ Tackling **land-based sources**.
- ◆ Reducing consumption of unnecessary **single-use plastics**.
- ◆ Collaboration with and capacity building of **local governments**.
- ◆ **Capacity building in developing economies** for waste management
- ◆ **Business/government** collaboration.
- ◆ Science and technology for better understanding of **dynamics between plastic consumption and marine plastic pollution**.

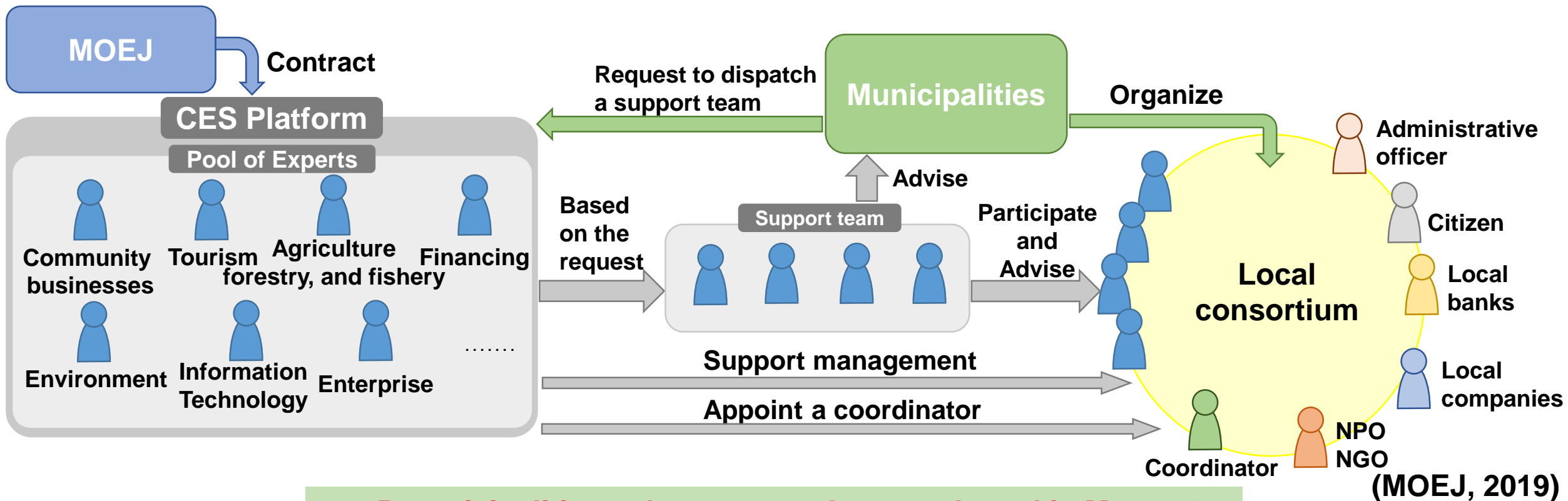
Overview of Policies and Instruments for Prevention and Reduction



MOEJ's Platform Project toward CES

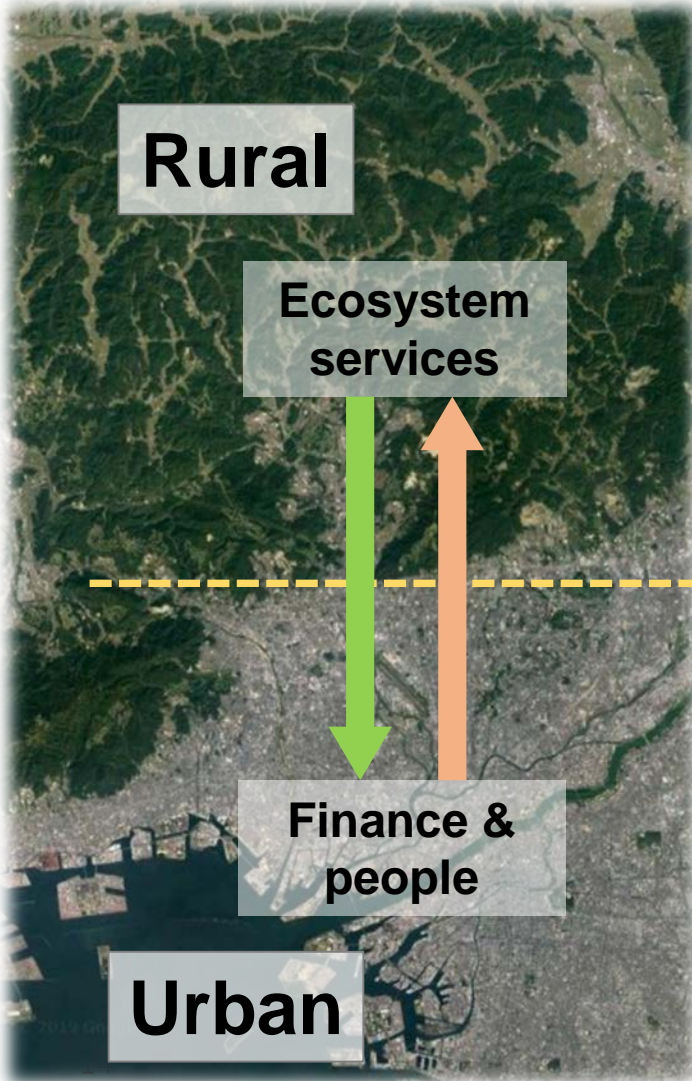
Objectives: Vitalize local communities and structure sustainable societies through forming sustainable communities.

In order to promote CES, this platform business will; 1) **develop environments**; 2) form **support teams**; 3) create **measures and policies** based on integrated analysis; and 4) conduct a **strategic PR campaign**.



Hokusetsu Satoyama CES Model in Hyogo Prefecture

Hokusetsu Area



Rural

Ecosystem services

Finance & people

Urban

power

Rural residents

Co-harvesting
(PV over farms)



Local food
production &
consumption

Urban farms

Urban residents

transportation

heat & power

heat

power

fertilizer

Forest/rural landscape conservation

Charcoal making



Wood biomass



Forest management

Livestock manure



Local transport system
(EV, biofuel)



biogas

fuel/heat

Education, learning & experiences

Learning /green tourism, migration

Demand & supply matching & sharing

(IGES, 2019)



ご清聴ありがとうございました。

Thank you for your attention.

President, Institute for Global Environmental Strategies (IGES)

Kazuhiko TAKEUCHI

IGES Institute for Global Environmental Strategies
公益財団法人 地球環境戦略研究機関