

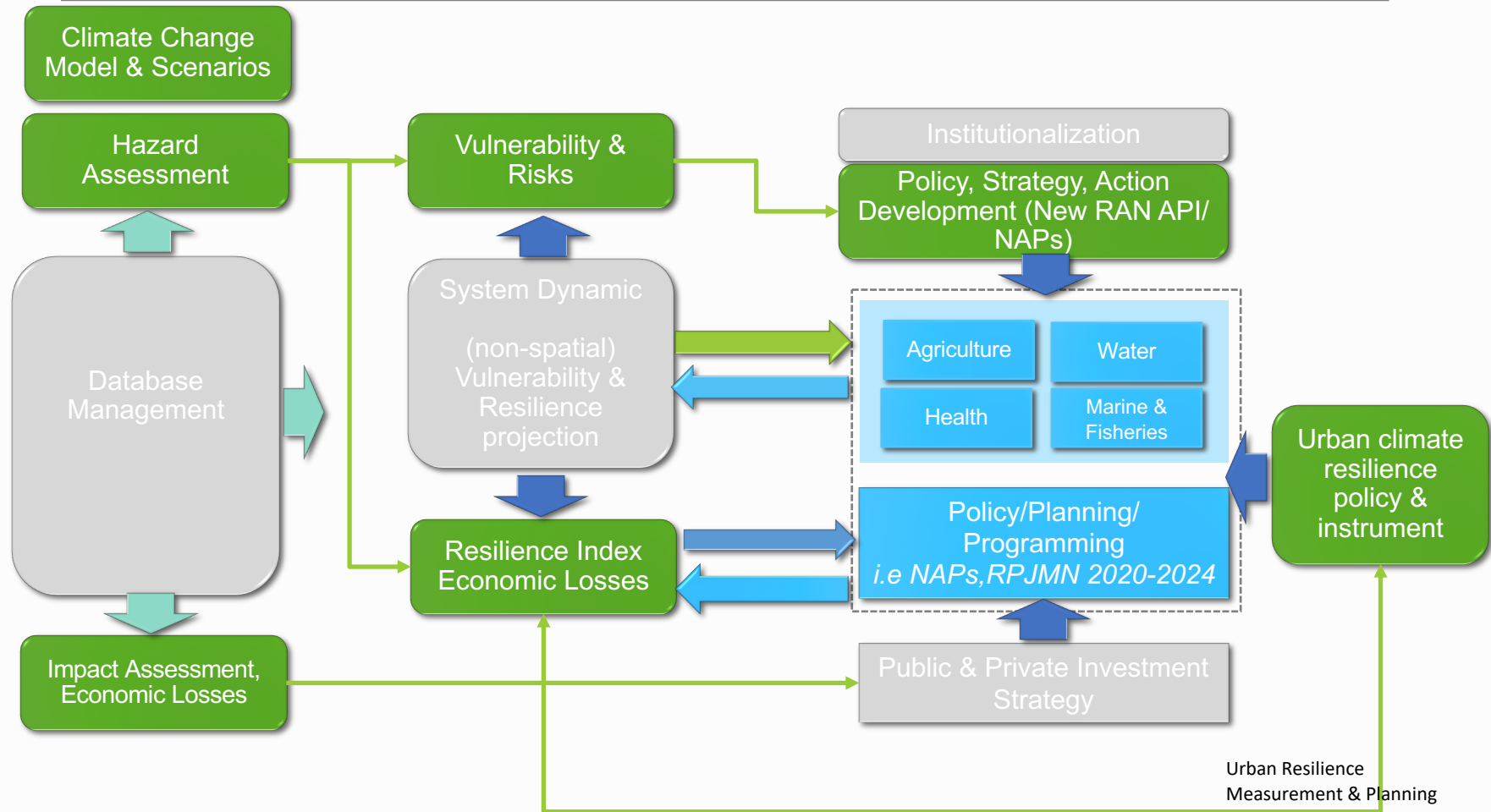
Indonesia Adaptation Platform (I-PLAT)

Concept and progress of cooperation

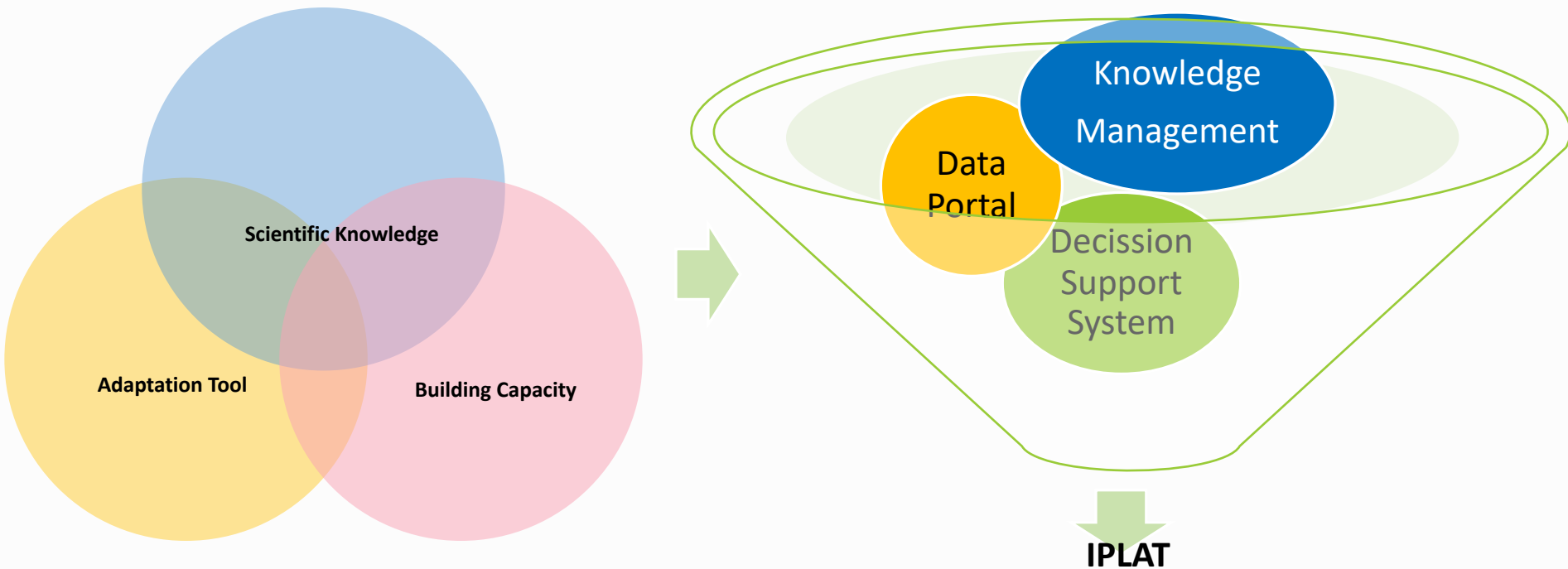
Presented by
Putra Dwitama
Head of RAN API Secretariat

ISAP 2019
International Forum for Sustainable Asia and the Pacific
Yokohama, Japan, 30 – 31 July 2019

RAN API Review

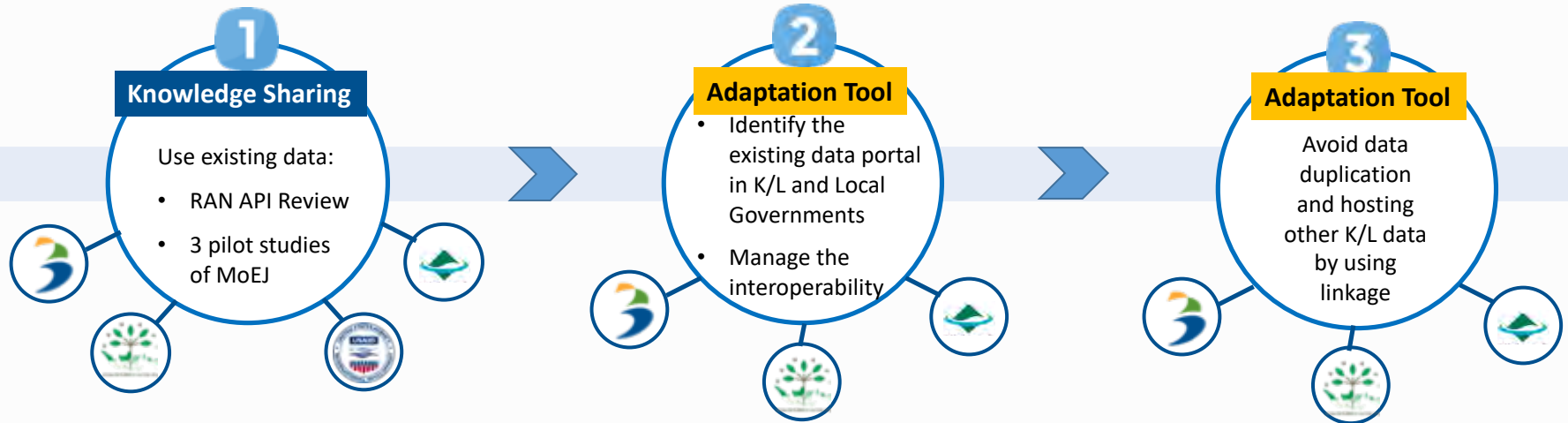


Defining I-PLAT



Process on Cooperation and Activities

Aim: Building a knowledge management; interoperability data portal; and dynamic system development



Modalities

Spatial Data

- Climate Projection
- Potential Climate Change Hazard
- Vulnerability and Risk
- Resilience Index
- Economic Losses

Non-Spatial Data

- Ministry/ Agency Activities
- Regional Activities
- Indicator data of resilience index (including from ICCSR and current condition)

Others

- Law and regulations
- Finance Opportunities
- Integrated action with DRR and SDGs
- Links from global, national, sectoral, local

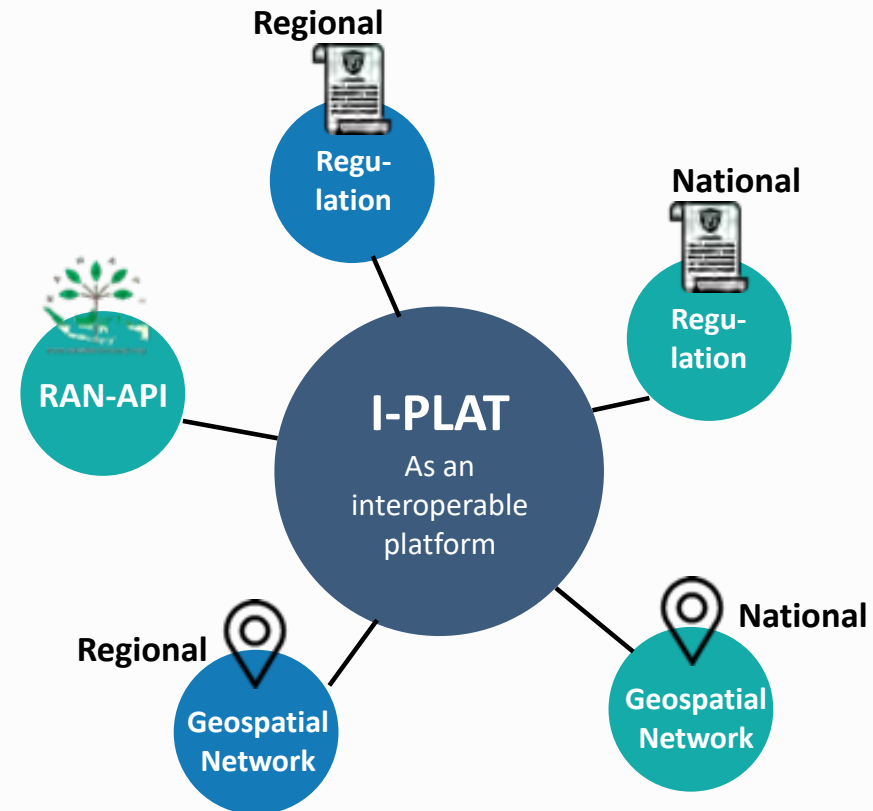
Dynamic System Development

Stages

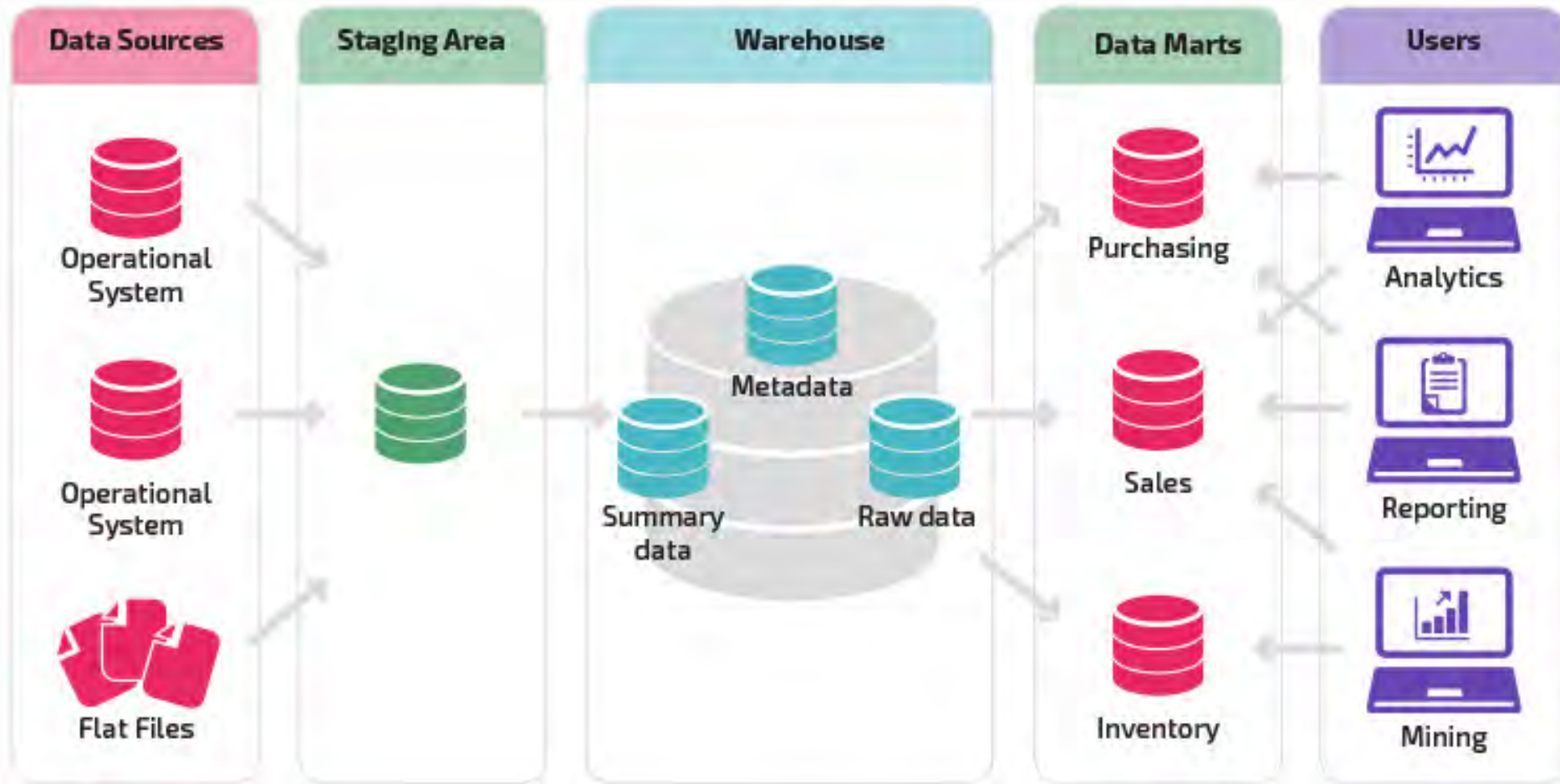
- Need Data Portal & Geo Portal List that already “interoperable”
- Develop a Dynamic System Prototype (Data Source, Data Mart, & Dashboard Development)

Challenges

- Low Capability on Data & Information Center Division (Pusdatin) at each K/L or Municipalities
- Many of them not publish data with proper interoperability standard (.xml, .json, wms)

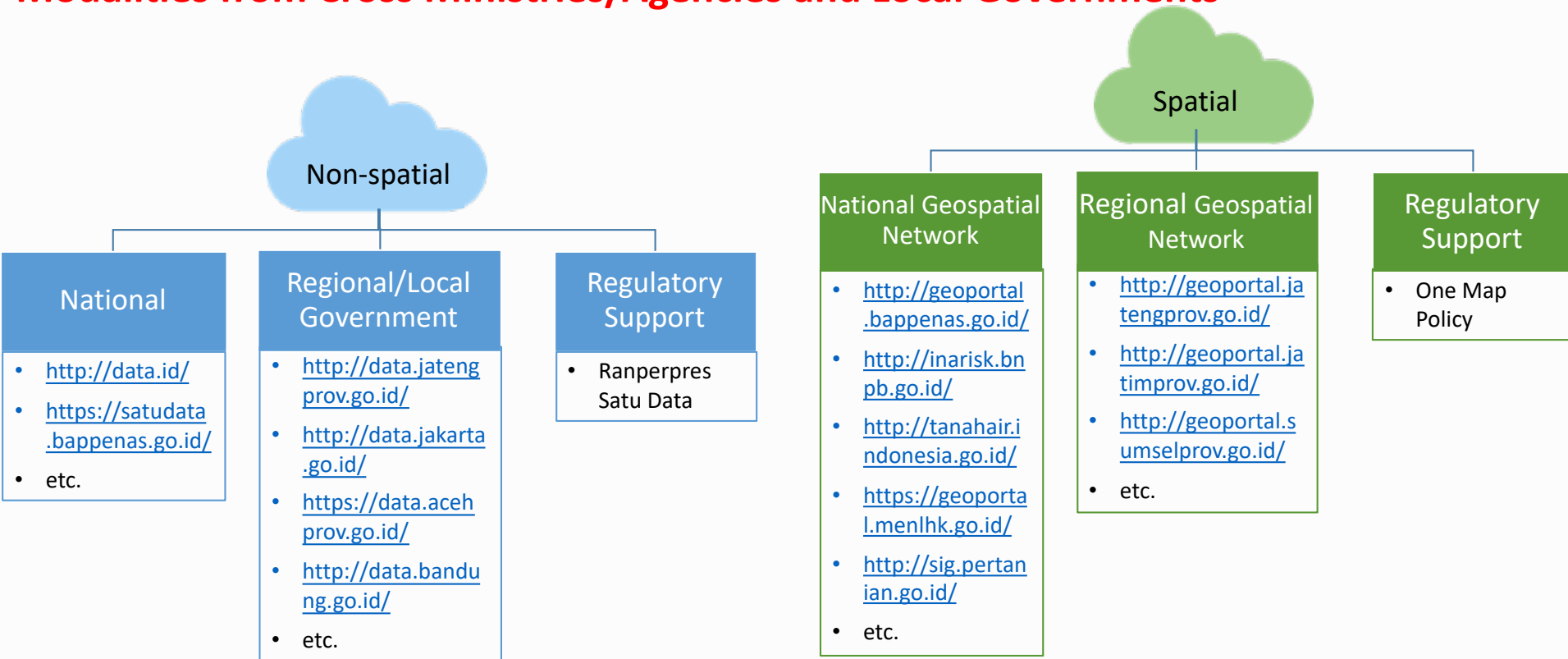


The Dynamic System

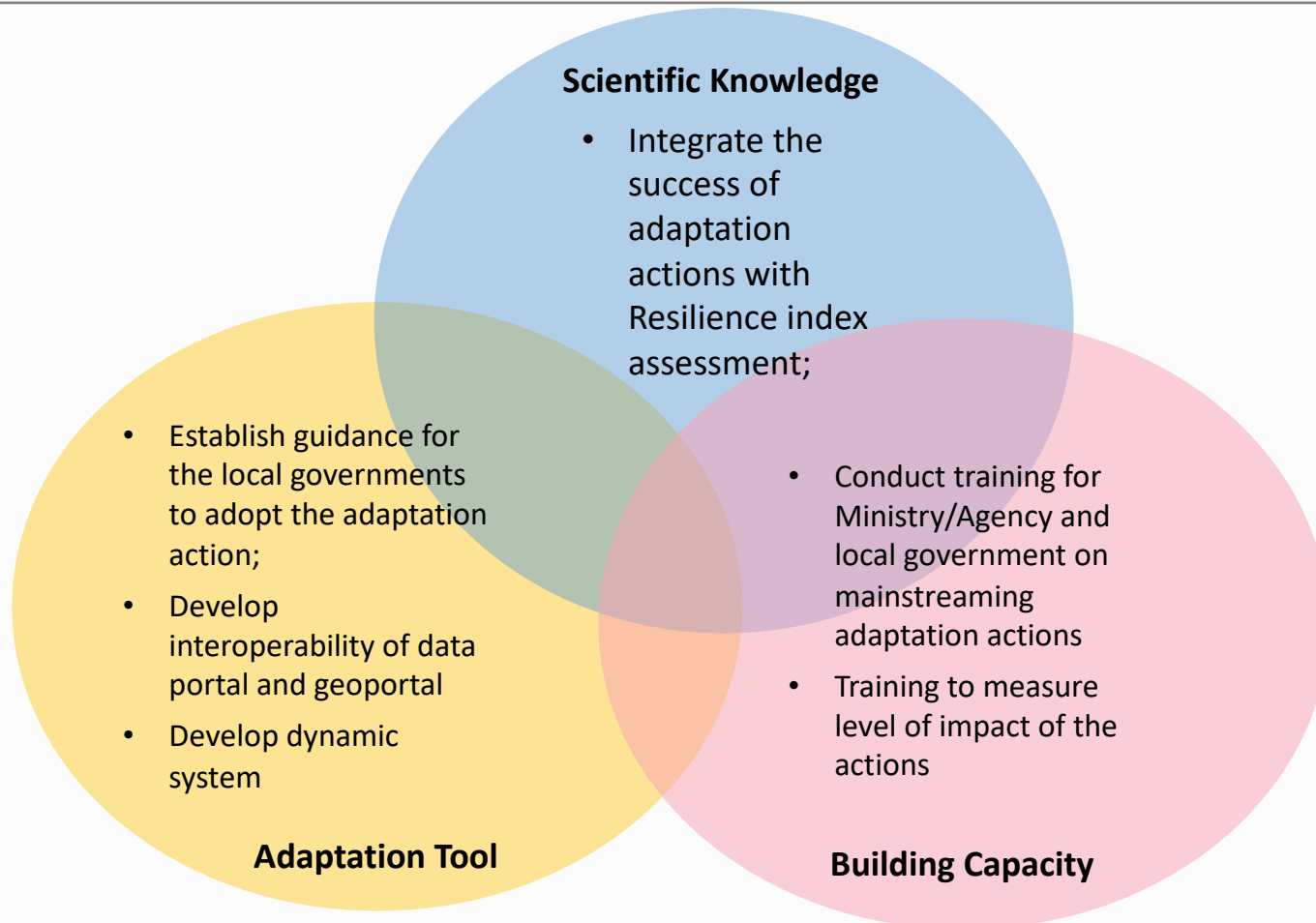


The Modalities

Modalities from Cross Ministries/Agencies and Local Governments



Expected further support



Development Plan

Knowledge Management Development

- Identification of the existing content
- Web portal design
- Web portal development
- Web portal content population

Data Portal Development

- Data identification
- Data portal design
- Data portal development
- Data portal content population

Dynamic System Development

- Identification “interoperable” data
- Thematic dashboard design
- Data integration from source system & data mart development
- Development of dashboard prototype

Thank you

RAN API Sekretariat
Lippo Kuningan Building Floor. 15
Jl. H.R. Rasuna Said Kav B12, Jakarta 12940
Email : putra@sekretariat-ranapi.org; admin@sekretariat-ranapi.org