

Adaptation and Resilience Building in the Hindu Kush Himalaya





AFGHANISTAN

PAKISTAN

CHINA

NEPAL

BHUTAN

INDIA

BANGLADESH

MYANMAR

- Hindu Kush Himalaya
- River basins

- 8 countries
- 240 million people in the HKH mountains and hills
- 1.65 billion people downstream

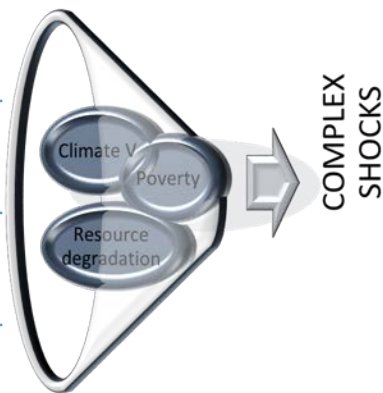
CHALLENGES

Poverty: Inequality; Marginality; Declining social capital

Governance: Lack of implementation; inefficient mechanisms

Resources: resource degradation; lack of capabilities; finance

Vulnerability: Disasters; CC & CV



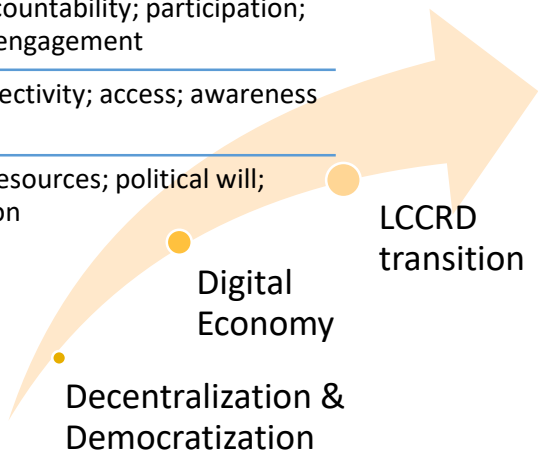
COMPLEX SHOCKS

OPPORTUNITIES

D&D: accountability; participation; political engagement

DE: connectivity; access; awareness

LCCRD: resources; political will; innovation



GENERATE EVIDENCE TO ENABLE DECISION MAKERS TO RESPOND TO COMPLEX RISKS & OPPORTUNITIES IN THE REGION

DESIGN SOLUTIONS FOR INCLUSIVE & SUSTAINABLE INVESTMENT IN RMS



Safety nets



Future fit enterprises



Nature based

STRENGTHEN CAPABILITIES OF COMMUNITIES & INSTITUTIONS TO IMPLEMENT & SCALE-UP RESILIENT MOUNTAIN SOLUTIONS

1. Policy & regulatory frameworks
2. Skills
3. Knowledge networks

INCLUSIVE INVESTMENT IN RMS

1. **Finance:** Investor networks; Financial services
2. **Markets:** Green products; Digital marketing; Capabilities (jobs/skills)

Adaptation & resilience building

Q&Q services

Enhanced ecosystems

MD

Reduced poverty

Enhanced resilience

Ecosystems, HH & local enterprises can absorb, adapt and transform in response to complex shocks & opportunities

Adaptation



Good opportunities for scaled up, inclusive and comprehensive climate change adaptation responses

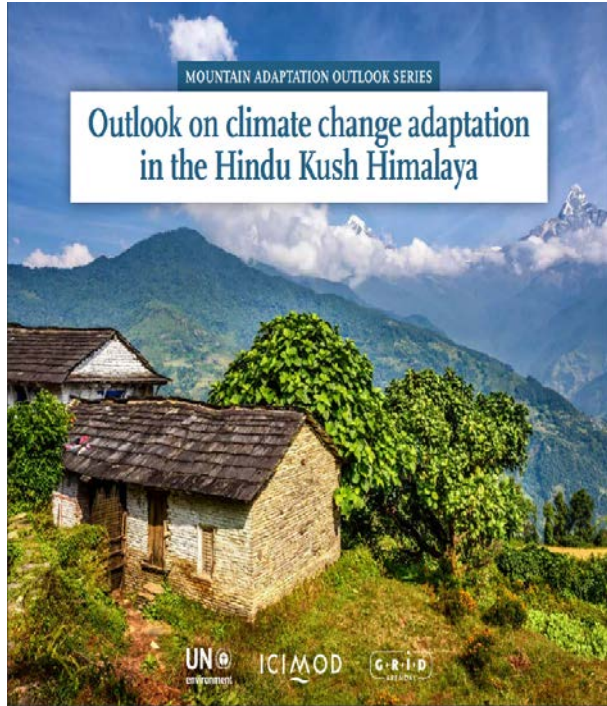
Future costs of adaptation highly speculative, but will be high and highly unlikely international finance will be sufficient

Adaptation becoming increasingly urgent for the HKH, while data, capacity, and resource gaps are a big challenge.

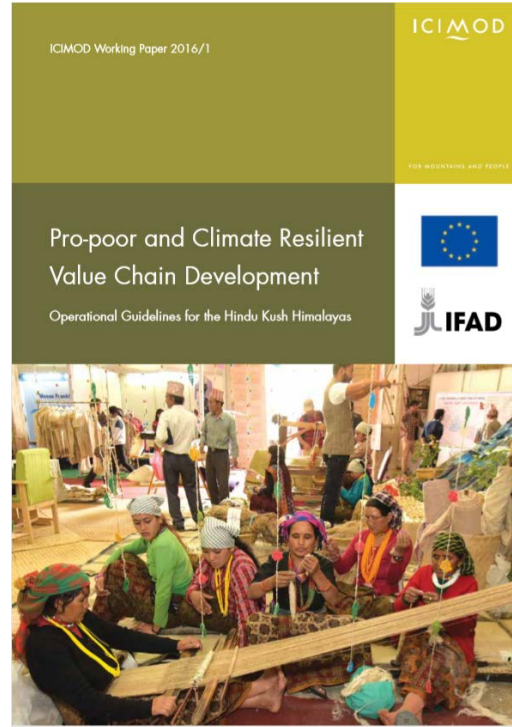
Climate change adaptation policies and practices must intensify in the HKH—and become transformative.

Policy and practice needs to focus more on the links between climate change adaptation, disaster risk reduction, and the Sustainable Development Goals.

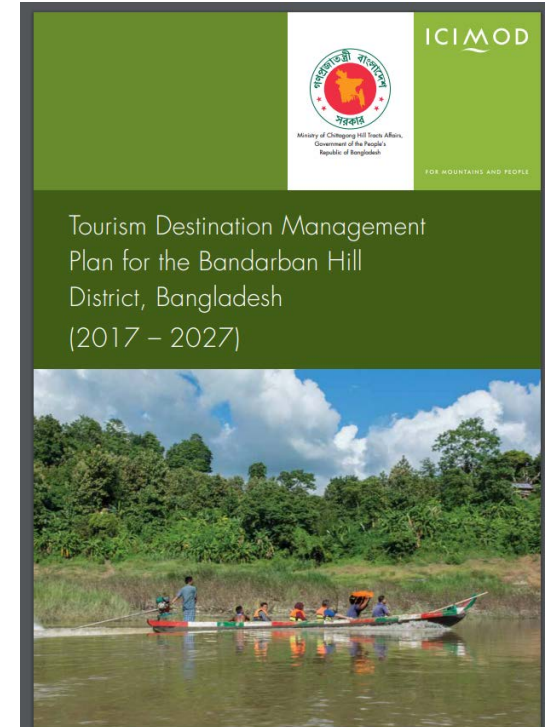
EVIDENCE



SOLUTIONS



CAPABILITIES



A wide-angle landscape photograph of a mountain valley. In the foreground, there are terraced fields with green crops and a white satellite dish. A small building is partially visible. In the middle ground, a village with various buildings, including a prominent white one with a red roof, is situated. The background features steep, rocky mountains under a blue sky with scattered white clouds. A wide river or valley floor is visible in the distance.

Thank you!