



ISAP 2020

International Forum for Sustainable Asia and the Pacific

IGES
Institute for Global
Environmental Strategies

Toward the Establishment of a Sustainable Society in Harmony with Nature - A Key for Redesign of Our Society in the Post-COVID Era

ISAP Thematic Track 6

*“Redesigning Local for Transformative Change:
Demonstration of Circulating and Ecological Sphere (CES)”*

11 November 2020

Prof. Kazuhiko Takeuchi

President, Institute for Global Environmental Strategies (IGES)

COVID-19 Pandemic and Unsustainable Development

Rapid Deforestation

Rapid Urbanization

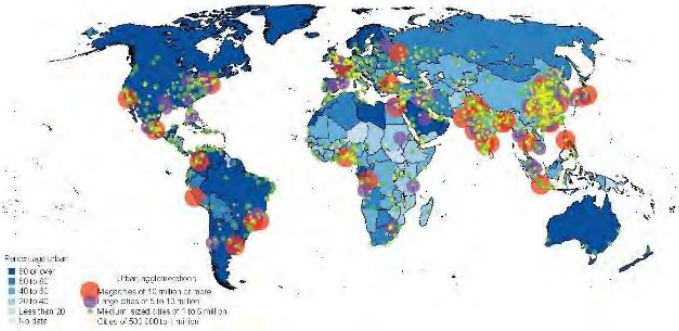
Massive Movement of People

MAP OF DEFORESTATION FRONTS

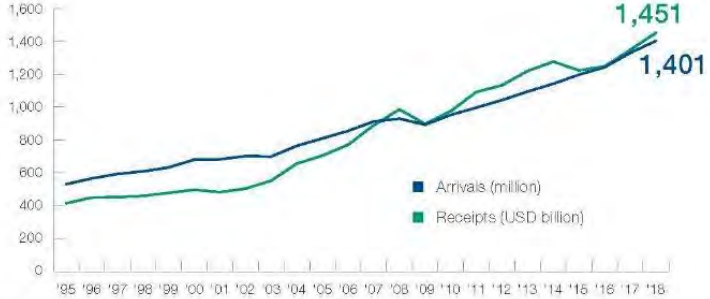


Mongabay News 27 Apr 2015

Map 1. Percentage urban and urban agglomerations with 500,000 inhabitants or more, 2018



UN World Urbanization Prospects 2018



International tourist arrivals (million) and tourism receipts (USD billion)
Source: World Tourism Organization (UNWTO), July 2019.

UNWTO Tourism Highlights 2019

Same unsustainable paths accelerate

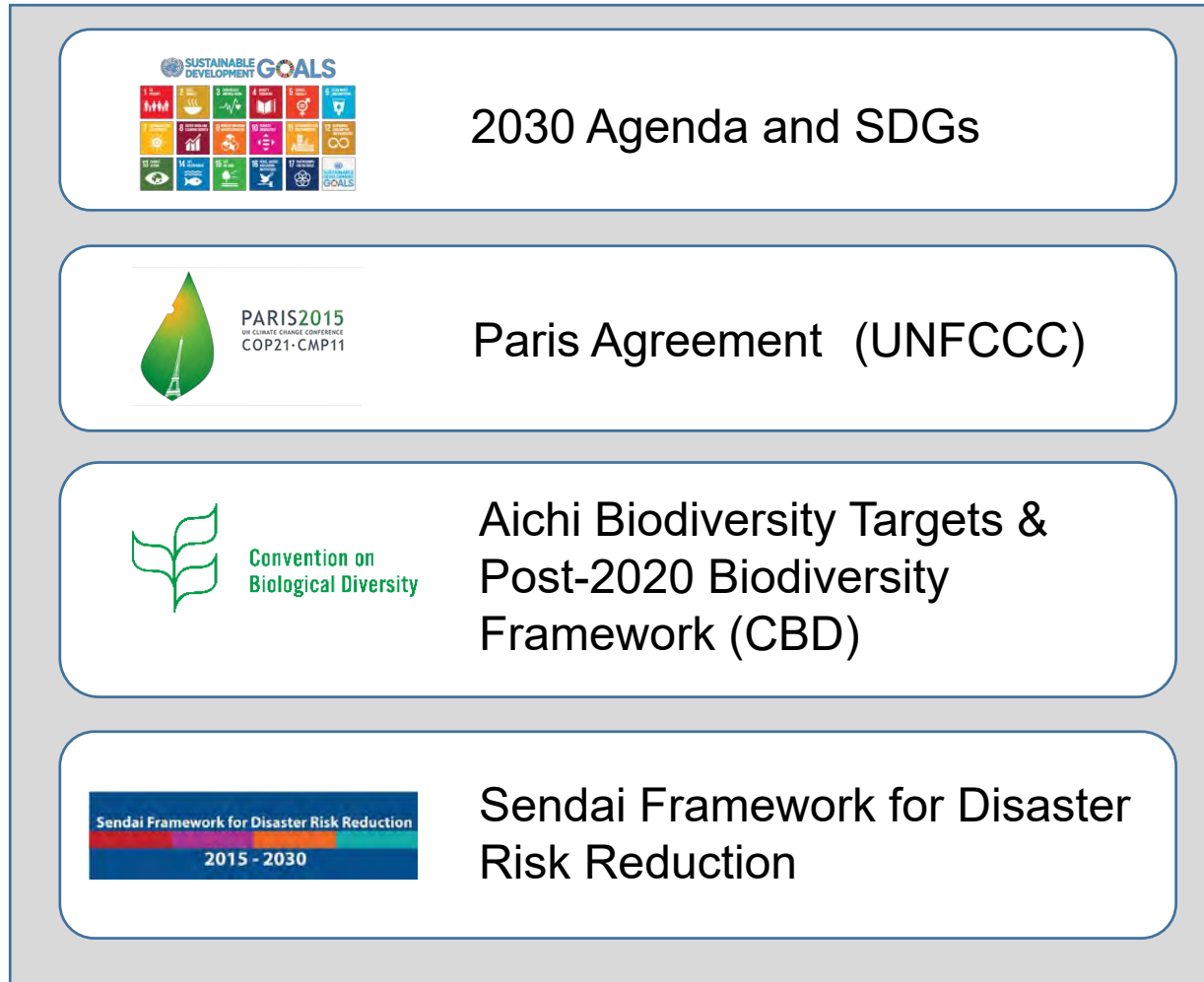
Biodiversity Loss

Climate Change

Disasters

Infectious Diseases

Global Agreements related to Sustainability

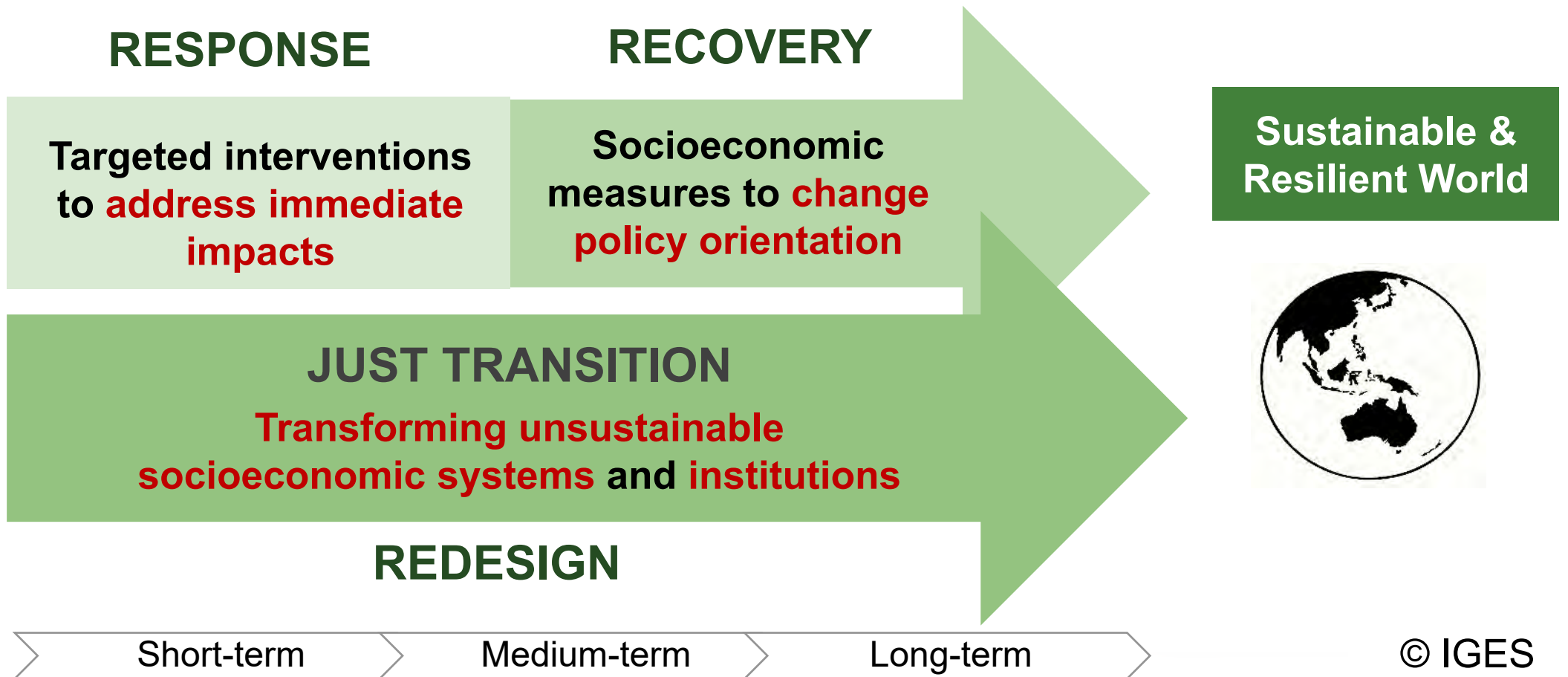


Need to realise **transformative change** in the Post-COVID19

Need to take **integrated actions** towards new sustainable society

Need to be **implemented locally, incorporated into lifestyles**

The “Triple R Framework” (Response-Recovery-Redesign)



“Adaptive Recovery” from Disasters

Responding to the crisis

- ◆ Emergency **humanitarian relief**
- ◆ Establishment and management of **evacuation centers** and **provisional housings**
- ◆ Removal of **disaster debris**

Recovery for more disaster-resilient society

- ◆ Flexible adaptation by using **ecosystem services** (EbA, Eco-DRR)
- ◆ Improvement of **infrastructure** and promotion of **effective land use**

Redesign the future of resilient society

- ◆ **Multi-sector/Multi-level cooperation** (*ko-jo, kyo-jo, ji-jyo*)
- ◆ Address **various other threats**, such as infectious diseases, heat stroke and earthquakes
- ◆ Promotion of **pre-disaster reconstruction** efforts

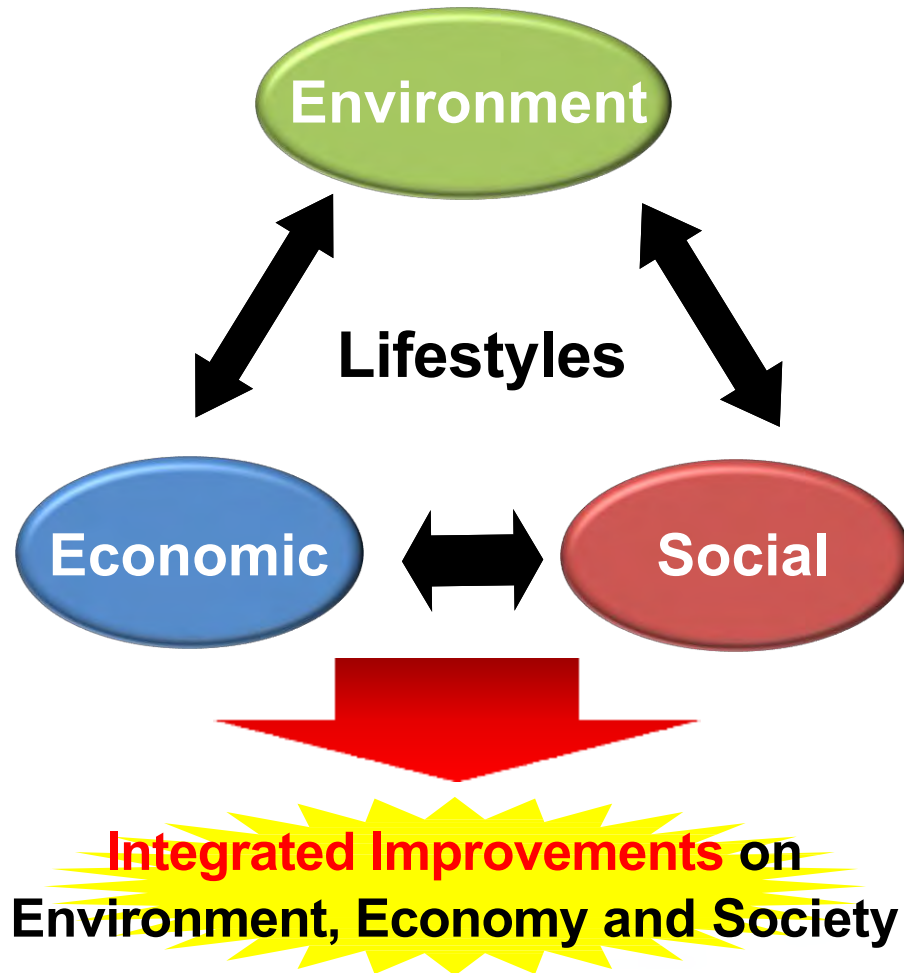
“**Adaptive Recovery**” is the new concept introduced by Japan. We must respond to disasters by implementing resilient measures including climate change adaptation.



Disaster prevention forests in Kesenuma Oshima, Japan

Japan's 5th Basic Environment Plan

Need for Integrated Approach



Basic Approach

- ◆ Utilizing the concepts of SDGs, realising the **Integrated Improvements on environment, economy and society**
- ◆ **Innovation of lifestyles** towards environmentally-friendly, healthy and high-quality life
- ◆ **Maximise the sustainable use of local resources** for improvements in economic and social activities
- ◆ Promoting **partnerships** with a wide range of stakeholders

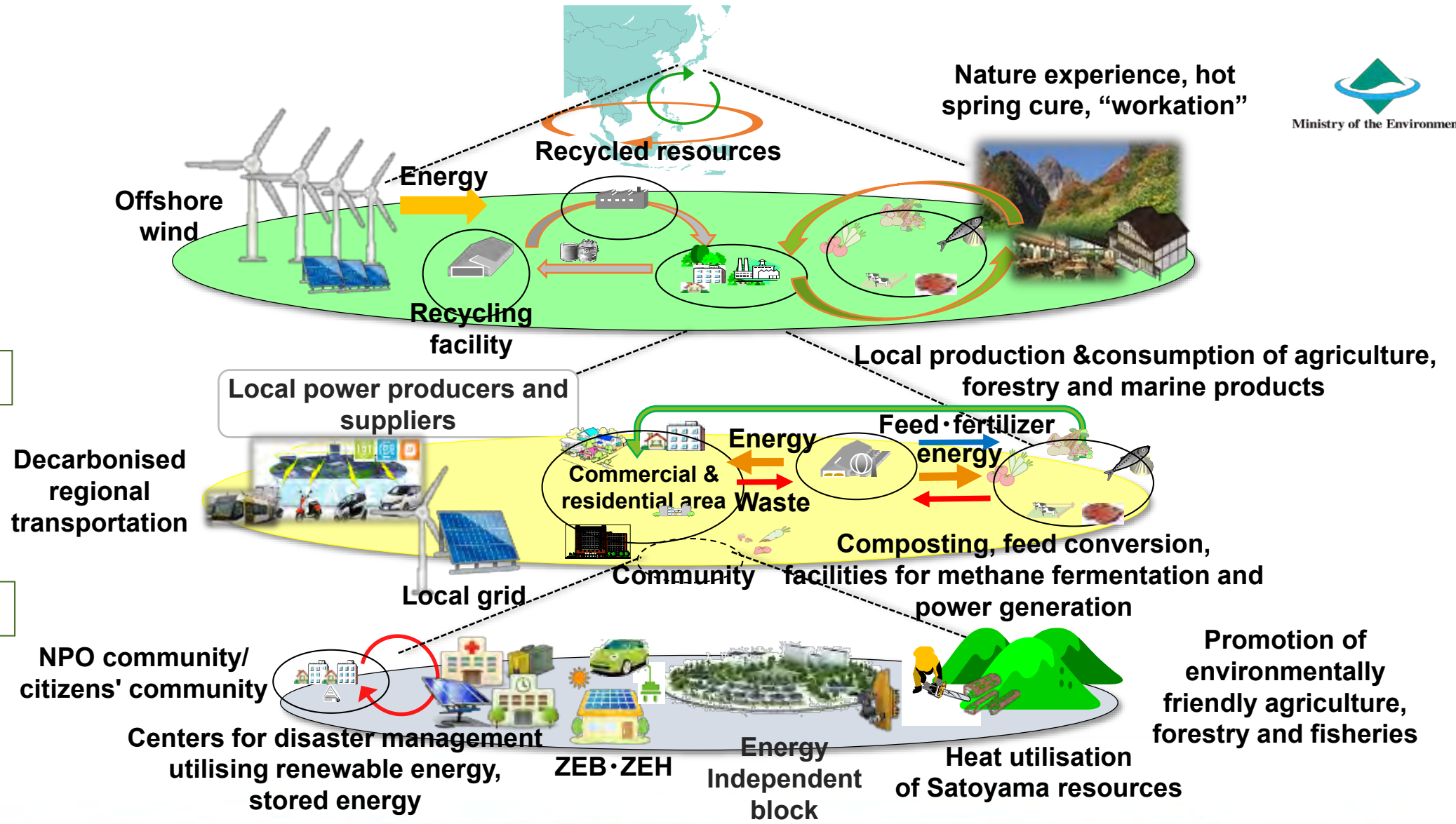
Multi-level Circulating and Ecological Sphere (CES)

Global

Regional

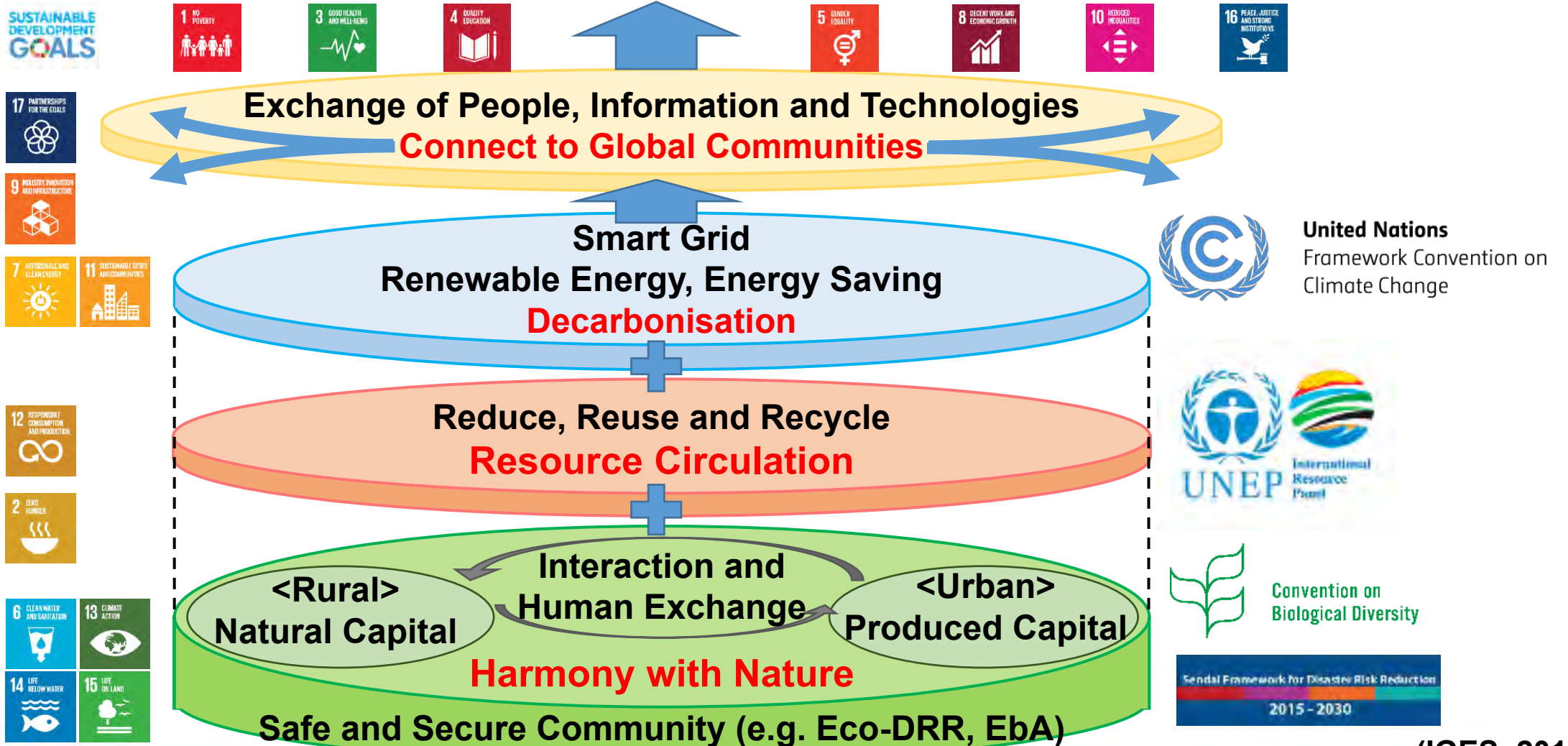
Local

Community

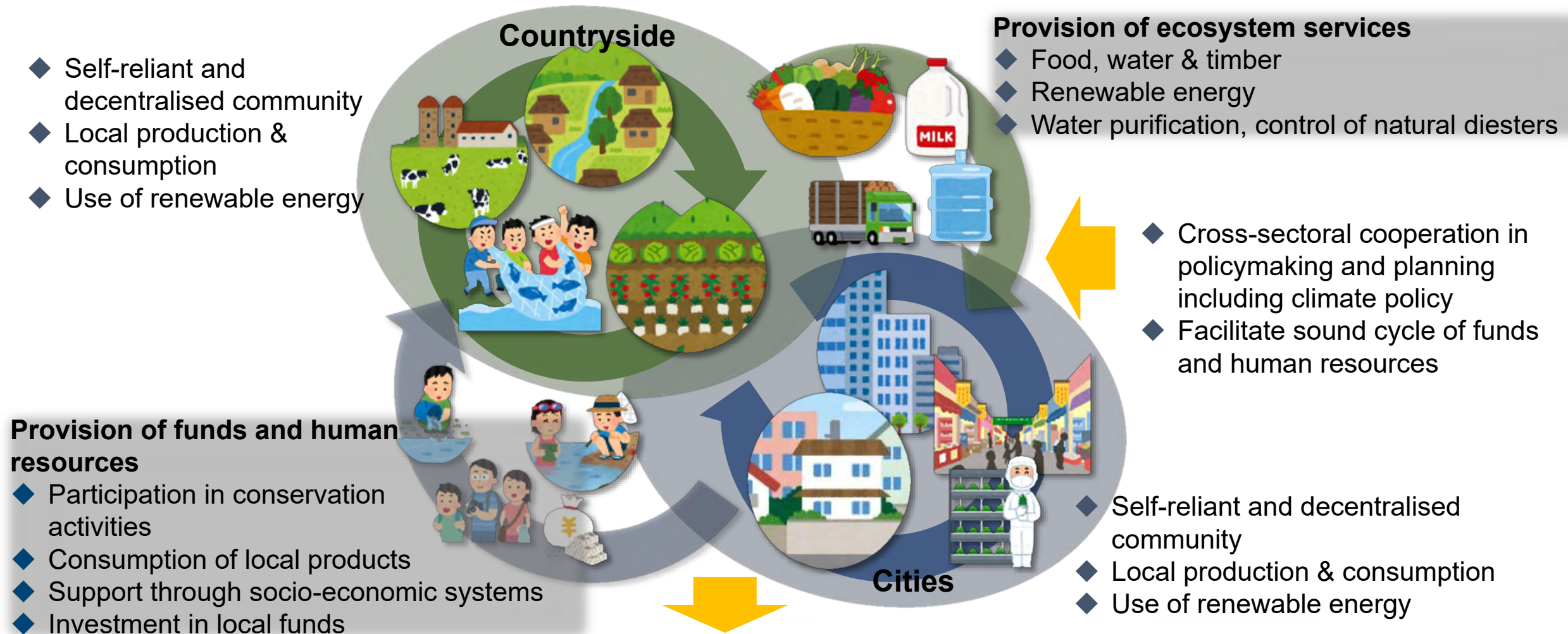


Circulating and Ecological Sphere (CES)

Integration of environmental, economic and social dimensions
 Integrated response to declining and aging population, Local revitalisation
CES to achieve *integrated solution* for those local issues



Local Circulating and Ecological Sphere (Local CES) (Localisation of SDGs)



Revitalisation of Decentralised, yet Connected Local Societies

GIAHS as a New Business Model

Globally Important Agricultural Heritage Systems (GIAHS)

- ◆ Started in 2002 by FAO, headquartered in Rome
- ◆ **Certification of sustainable agricultural systems that must be conserved** for future generations, e.g., farming methods that sustain biodiversity
- ◆ GIAHS looks ahead to the **future of agriculture** while looking back on the past
- ◆ In 2011, the *satoyama* of **Sado** (featuring the ibis) and the *satoyama* and the *satoumi* of **Noto** were designated as GIAHS.
- ◆ A further challenge is the **regional revitalization** through promotion of agriculture, forestry, and fisheries in ways that conserve biodiversity



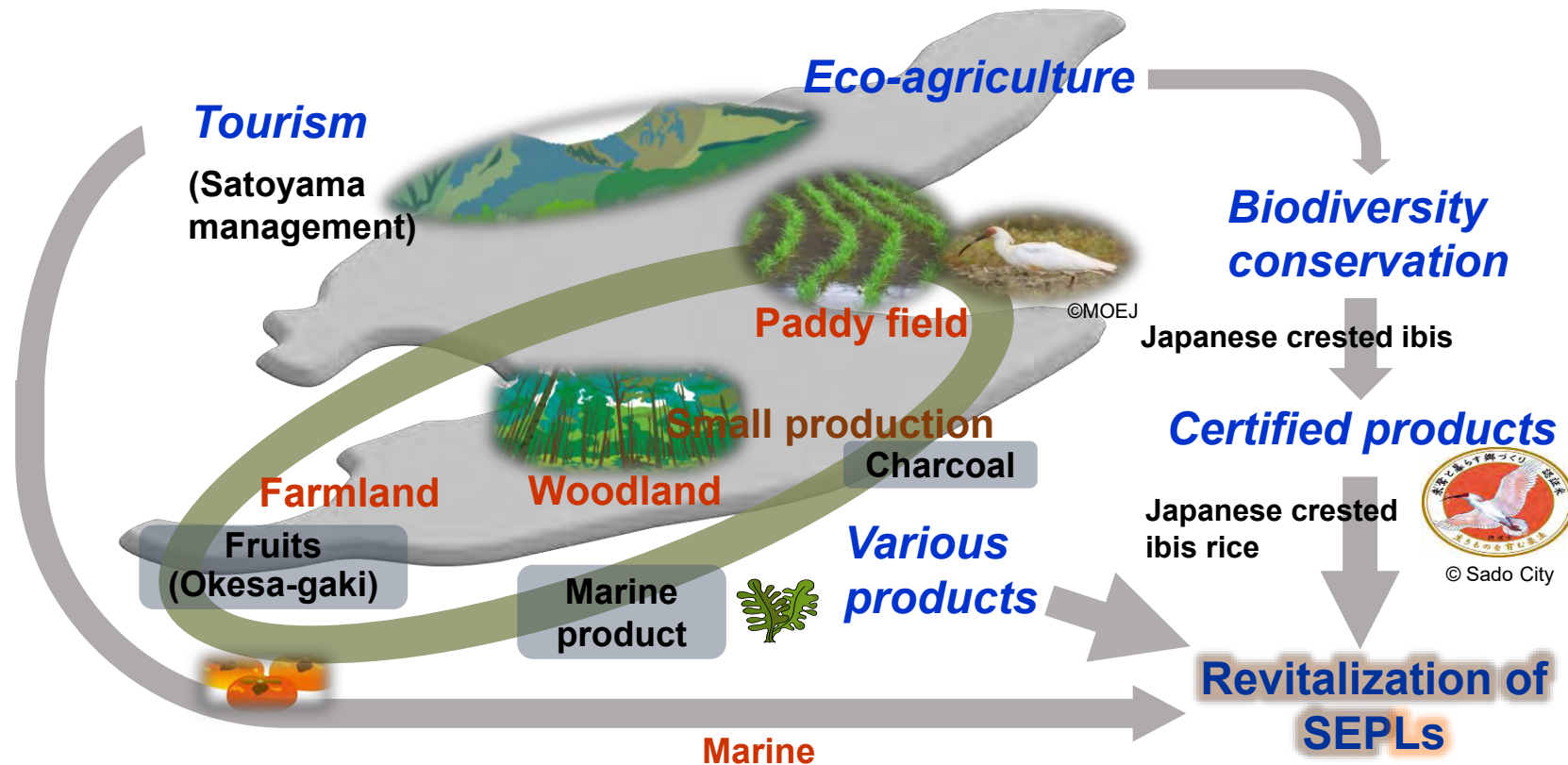
Takeuchi Mr. Takano Dr. Koohafkan
Former Mayor Director, Land and
Of Sado City Water Division FAO

Certification ceremony in Sado

New Commons and New Business Models

- ◆ The declining numbers and ageing of primary industry workers is a serious problem
- ◆ It is important to **promote regional complex industries** that go beyond previous efforts to link primary, secondary, and tertiary industries.
- ◆ A “**new commons**” that allows horizontal cooperation between a diversity of stakeholders is necessary.
- ◆ Models are needed which provide **added-value** to agricultural, forestry, and fisheries.
- ◆ These approaches should be developed not only in Japan but also more broadly and internationally.

New Business Model: The Case of Sado Island



- ◆ Add high value through production systems which sustain biodiversity
- ◆ Handle various goods collectively and establish access to markets
- ◆ Build synergies between tourism and bio-production industries

Thank You for Your Attention!

