

Practices and achievements of agriculture that nurtures and coexists with living things

ISAP2020 Thematic Session 6

Redesigning Local for Transformative Change:

Demonstration of Circulating and Ecological Sphere (CES)~

Toward the Establishment of a Sustainable Society in Harmony with Nature - A Key for Redesign of Our Society in the Post-COVID Era



**WATANABE Ryugo
Mayor of Sado City**

Restoring Toki to the wild again



**Toki reintroduction
experiment since 2008**
Challenges for
restoration

Feeding ground of toki
Paddy fields rich in
creatures, and shallow
swamps

**Extensive restoration of the habitat
throughout Sado Island is the key.**
Transform society where humans
and Toki coexist.

"Toki-to-kurasu-sato" (villages coexisting with toki) Rice certification initiative



Since 2007, before the reintroduction experiment



Create swales (or "e" in Japanese) to be dug around the paddy fields



Create biotopes

"Farming methods that nurture living creature"

**Agri.
Technologies**

**Restoration of
ecosystems**



Irrigate paddy fields in winter



Create fishways



✓ Established "agricultural methods that nurture living creatures" that not only protect the environment for biodiversity but also increase agricultural income, and extended the methods throughout Sado Island

Steady revival of the wild Toki population



Roadmap 2020 for Toki Return to the Wild (March 2016)

Goal: 220 toki in Sado Island living in the wild around 2020 to enable the birds to live in the natural environment

→ **Achieved the goal 2 years ahead of schedule.**

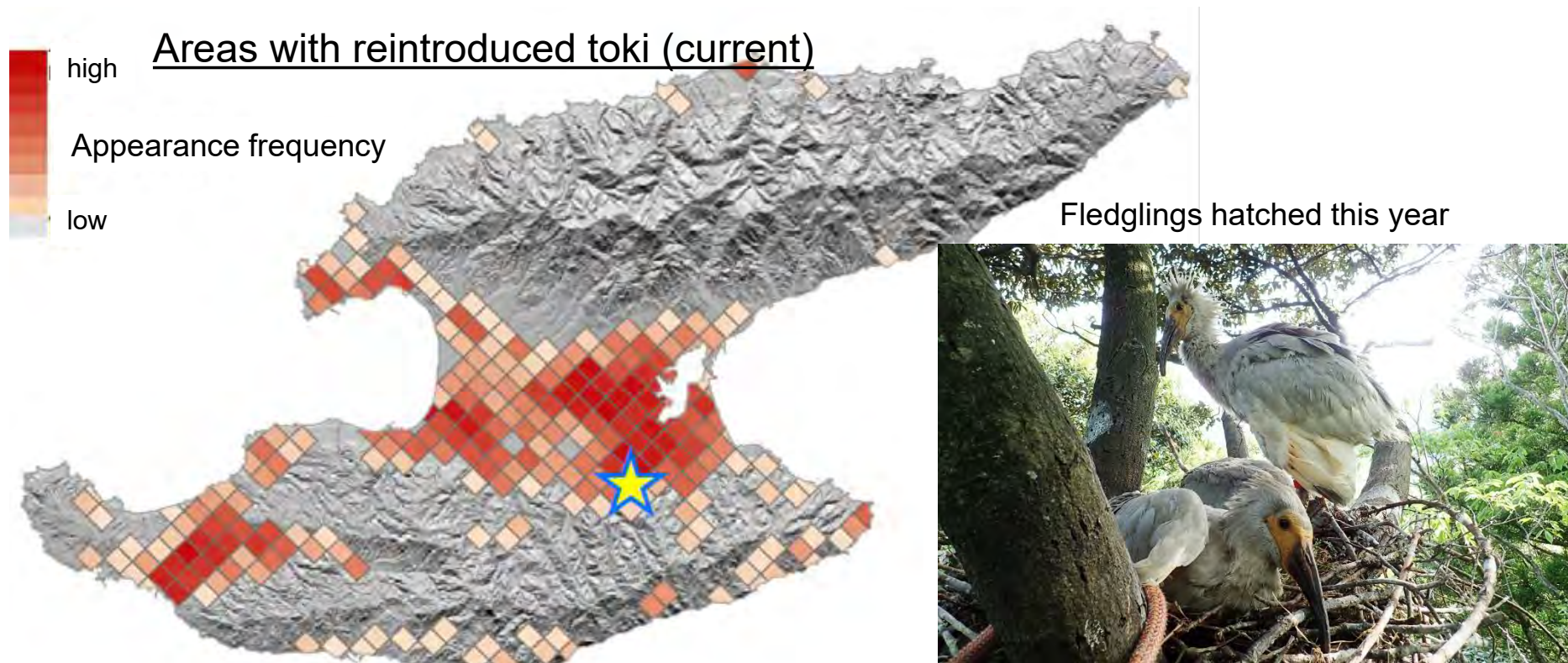


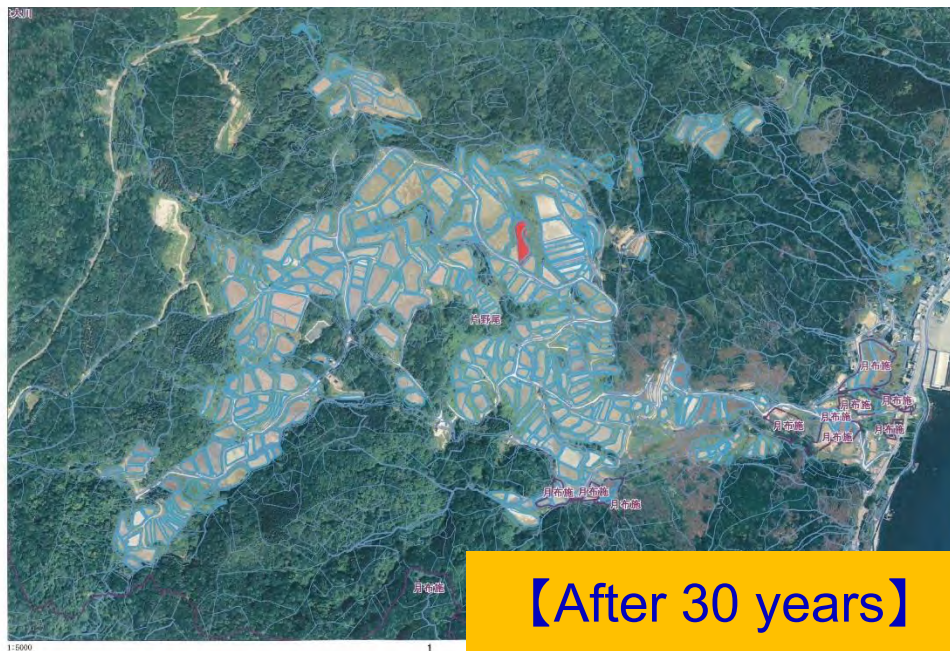
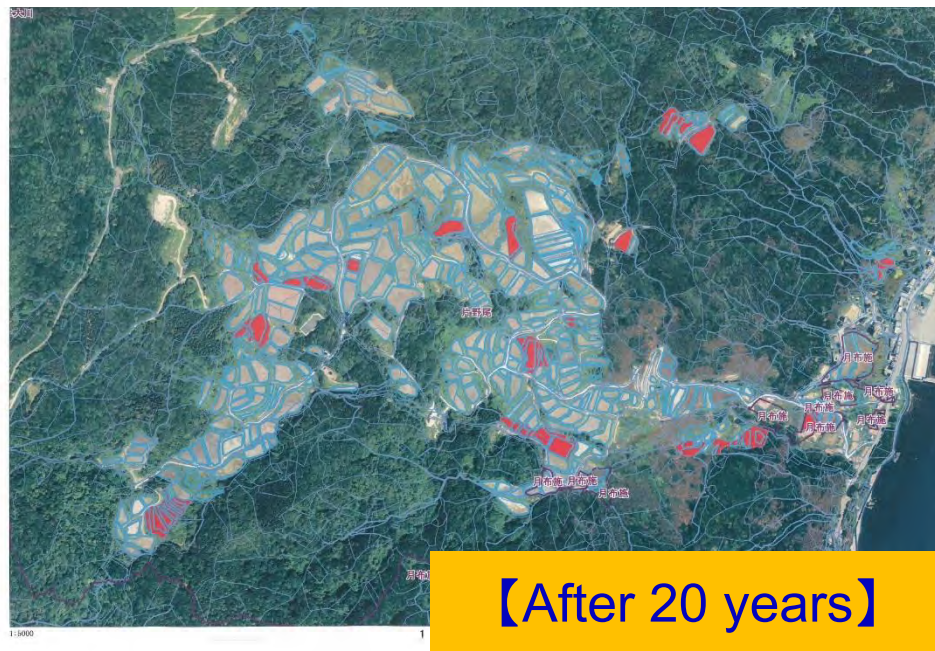
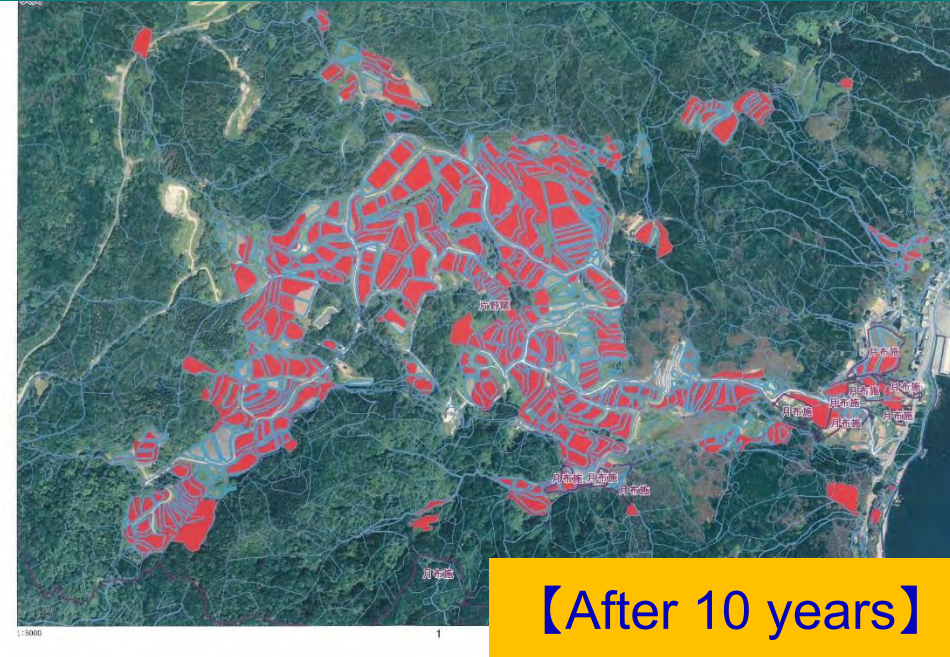
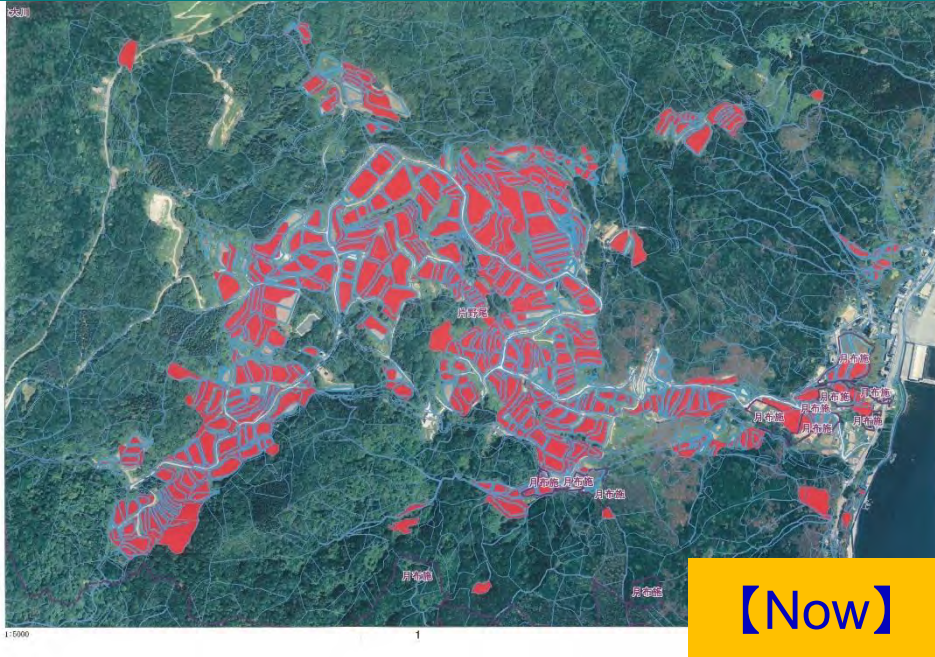
Photo: Sado Nature Protection Management Office, Ministry of the Environment, Japan

GIAHS Biodiversity, Nature, Culture, and Food

Recognising the value of tradition to coexist with nature



Ageing and decrease of birthrate



From a city facing **emerging challenges before others** to a **frontrunner in finding solutions**

Decline in young population,
Rapidly ageing society,
Decline in the working-age population

Loss of land and housing,
Lifeline crisis (hospitals, water, roads)

Loss of agricultural land and farming community.
Loss of local community
Loss of tradition and culture

Island depending on fossil fuels,
Shrinking economy,
Decline of small businesses

- Living coexisting with nature and living creatures
- Living with tradition, culture and historical townscape
- Caring for and preserving the environment
- Childcare friendly and secure living

To be a frontrunner in finding solutions

Well-being
Coexisting with nature

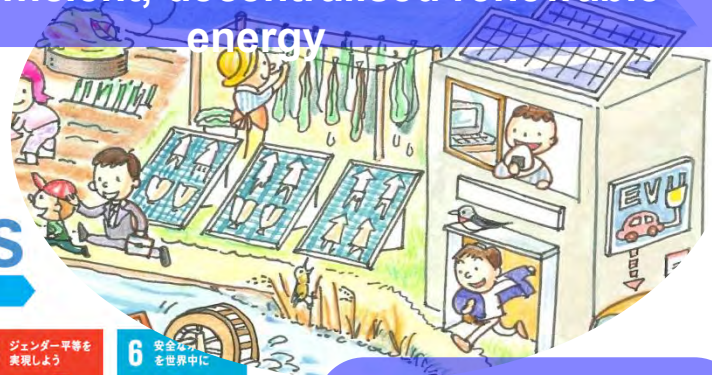
Challenges to creating local CES and becoming a SDGs Future City

- Establishing a sustainable island that is self-sufficient and decentralised ~

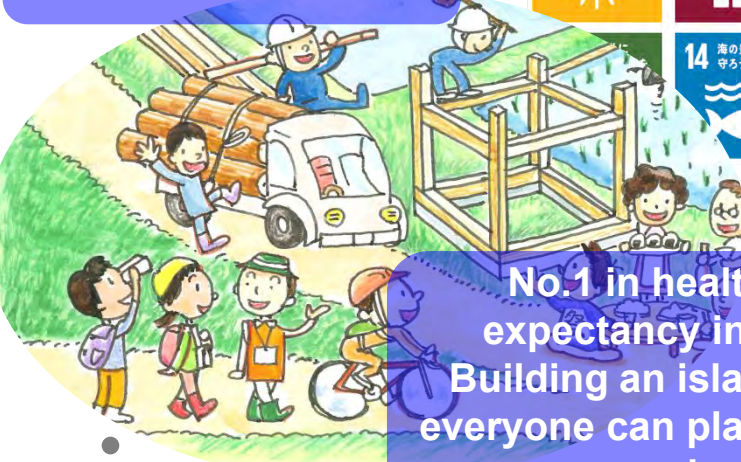
Coexisting with nature



Optimal energy mix
self-sufficient, decentralised renewable energy



Sustainable use of rich local resources



No.1 in healthy life expectancy in Japan,
Building an island where everyone can play an active role

Promotion of local consumption and production,
Food and nutrition education



Maintaining agricultural tradition and community