



---

# Regional Circulating and Ecological Sphere

---

November 2020  
Environmental Strategy Division, Minister's Secretariat,  
Ministry of the Environment, Japan

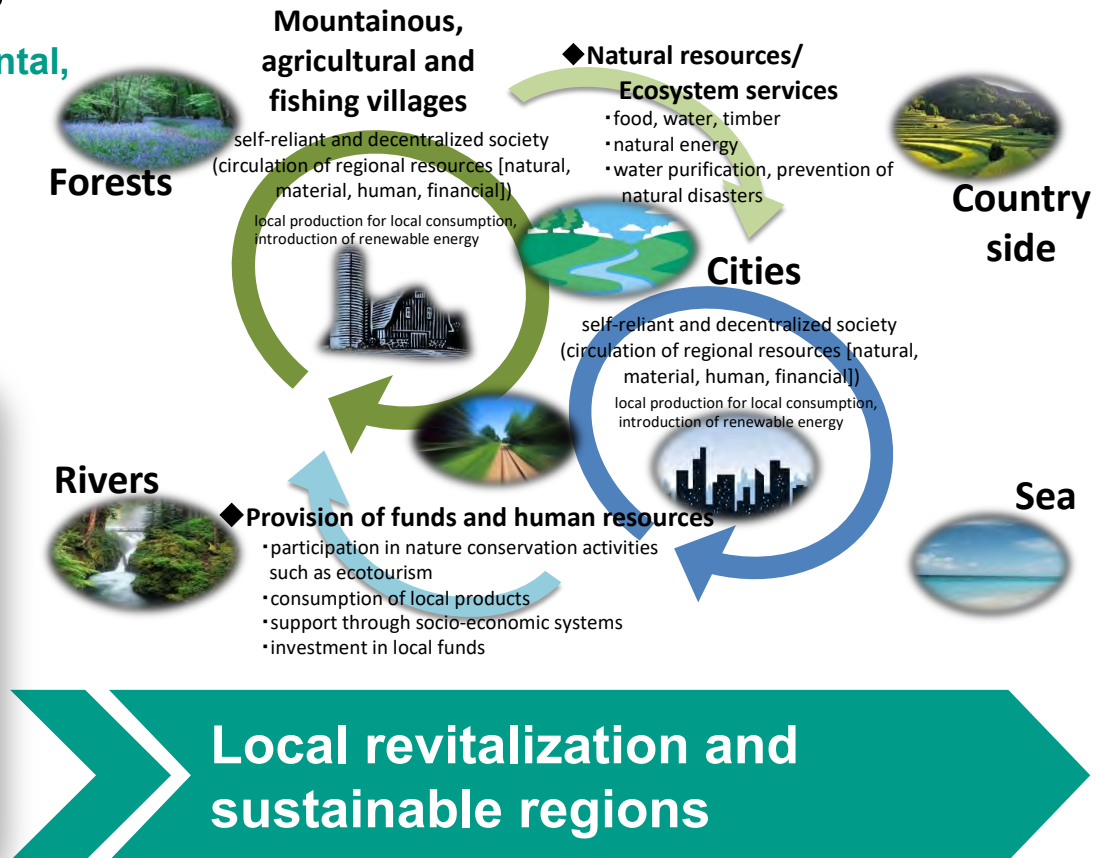
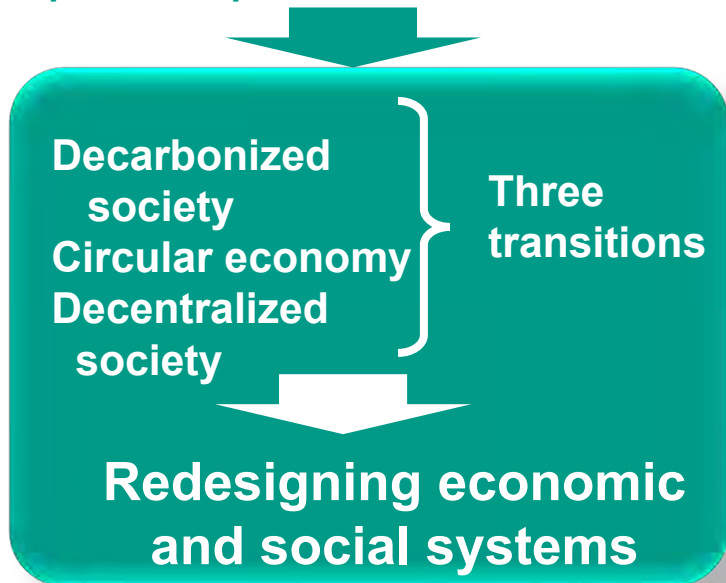


# Circulating and Ecological Sphere (CES) = Local SDGs

Aiming to make use of regional resources and strengths

- Form **self-reliant and decentralized societies** by utilizing regional resources of each region
- Complement and **support each other** according to the unique characteristics of each region.

- ✓ Integrated improvements on environmental, economic and social dimensions
- ✓ Innovation from every perspective
- ✓ Fulfill and strengthen wide range of partnerships

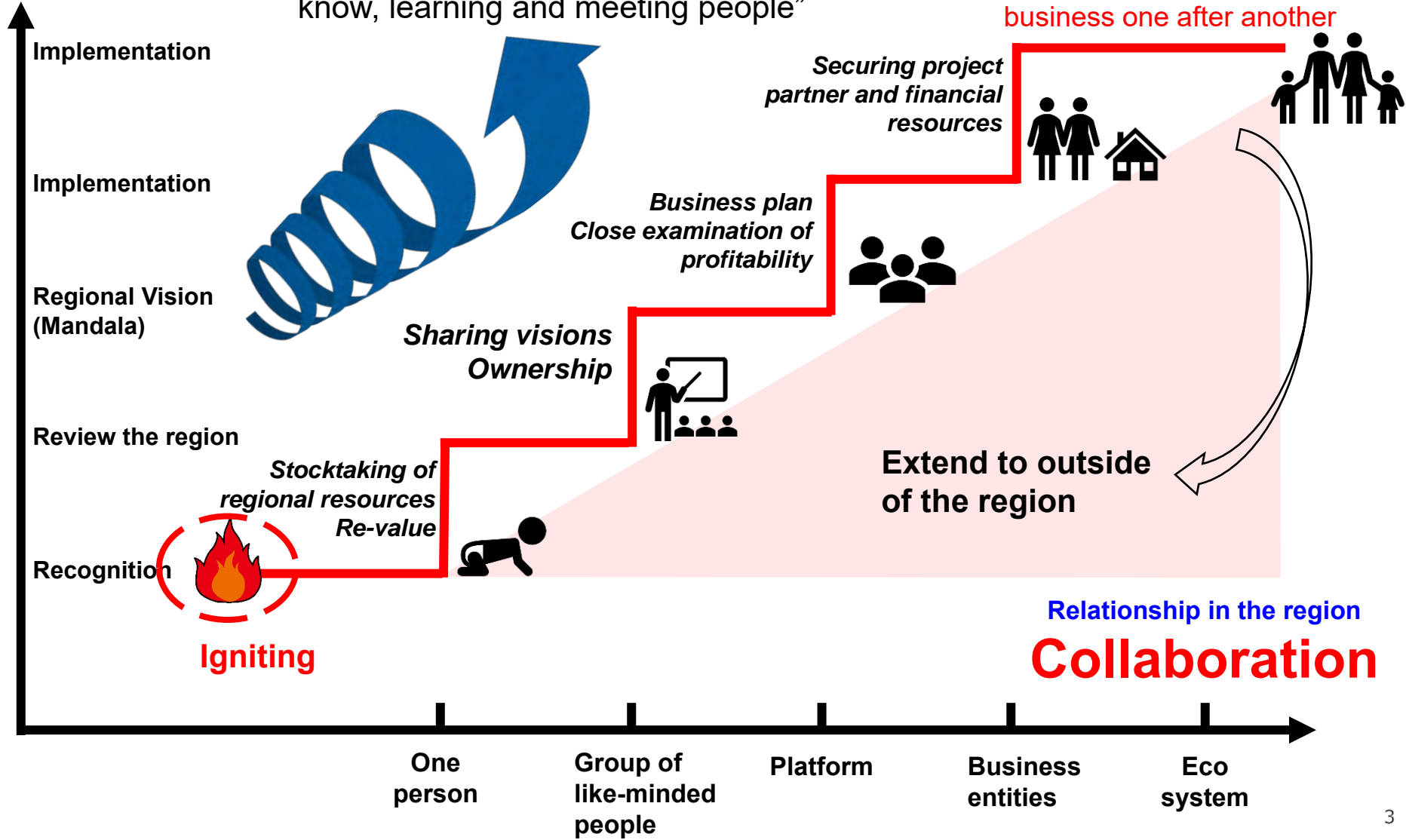


# Process to Develop CES

Level of project activities

Stepping up in the community by repeating the cycle of “getting to know, learning and meeting people”

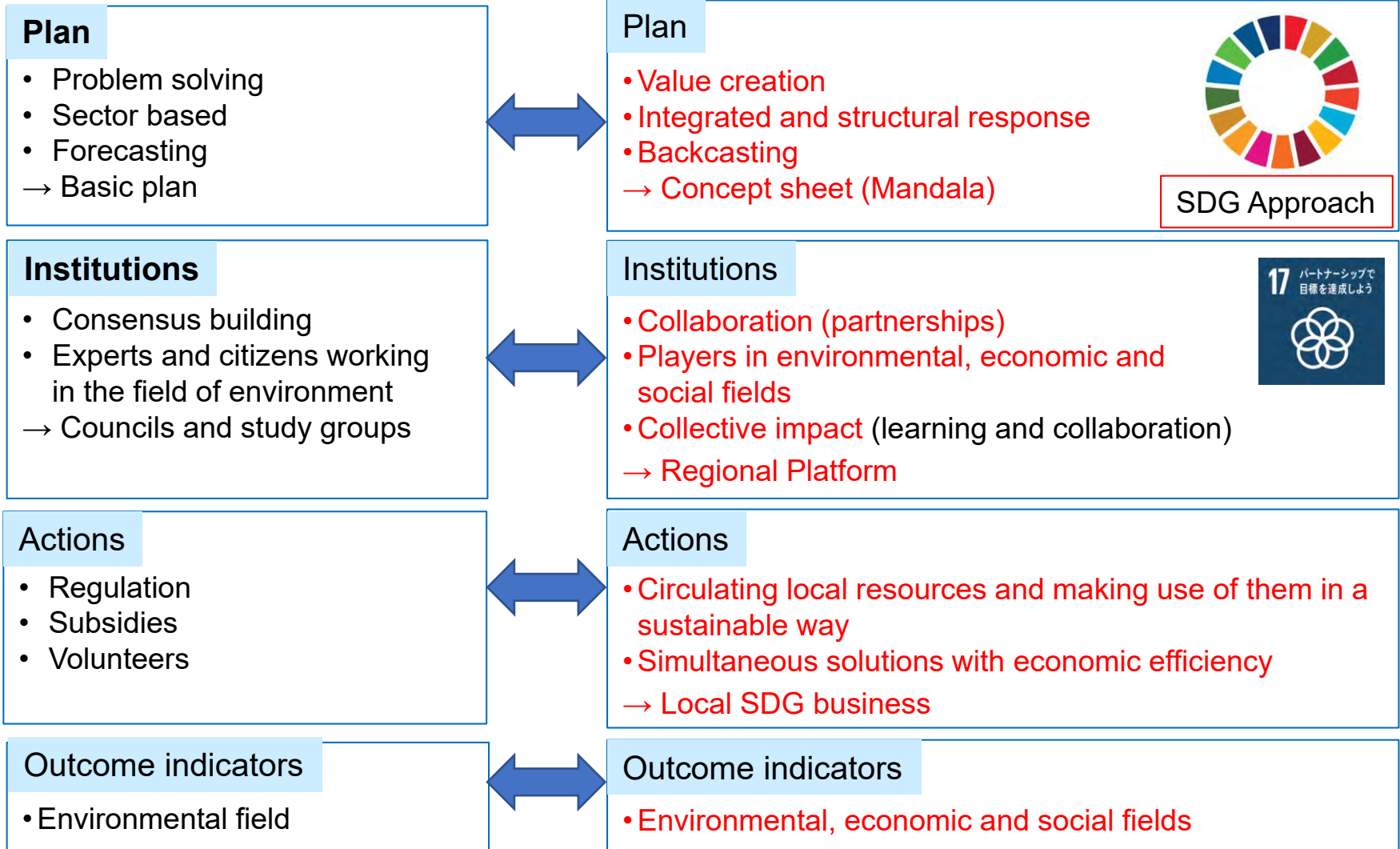
**CES Ecosystem**  
Creating environmental business one after another



# Process to Develop CES

## Reactive Traditional Approach

## Proactive Approach to Create CES



**Future environmental policy needs both approaches.**

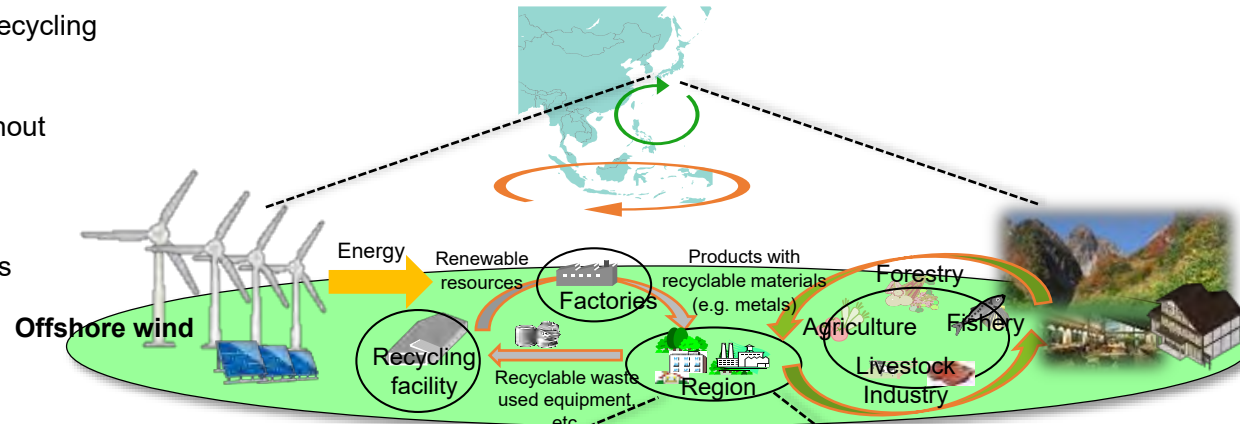
# Multi-level Circulating and Ecological Sphere (CES)

## International

- Recycling of materials that require advanced recycling technology, such as rare metals
- Exchange of inbound tourism
- Reduction of the environmental impact throughout the value chain

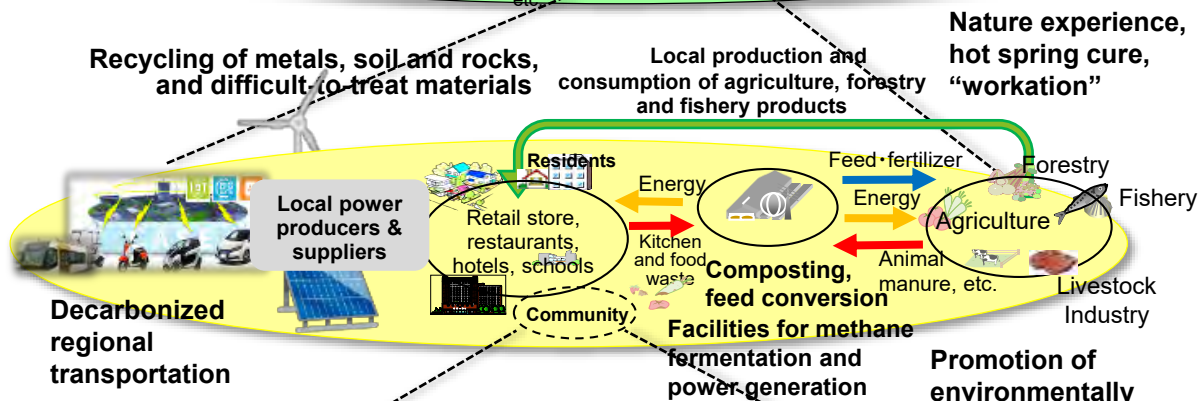
## Block, National

- Inter-regional use of renewable energy sources
- Recycling of metals, soil, stones, and difficult-to-process materials
- Interaction between cities and rural areas
- Interaction for a purpose in life and work
- Domestic consumption of agriculture, forestry and fishery products



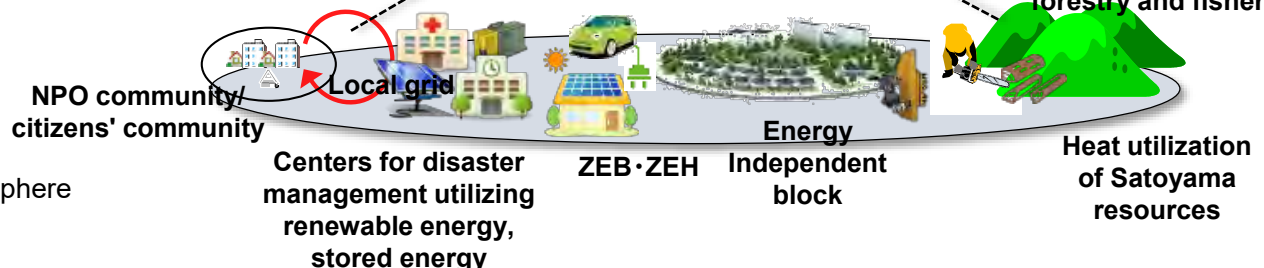
## Region (Local administration, basin)

- Local production and consumption of energy and local power companies
- Decarbonized regional transportation
- Use of biomass resources as energy
- Environmentally friendly agriculture
- Local production and consumption of agricultural, forestry and fishery products



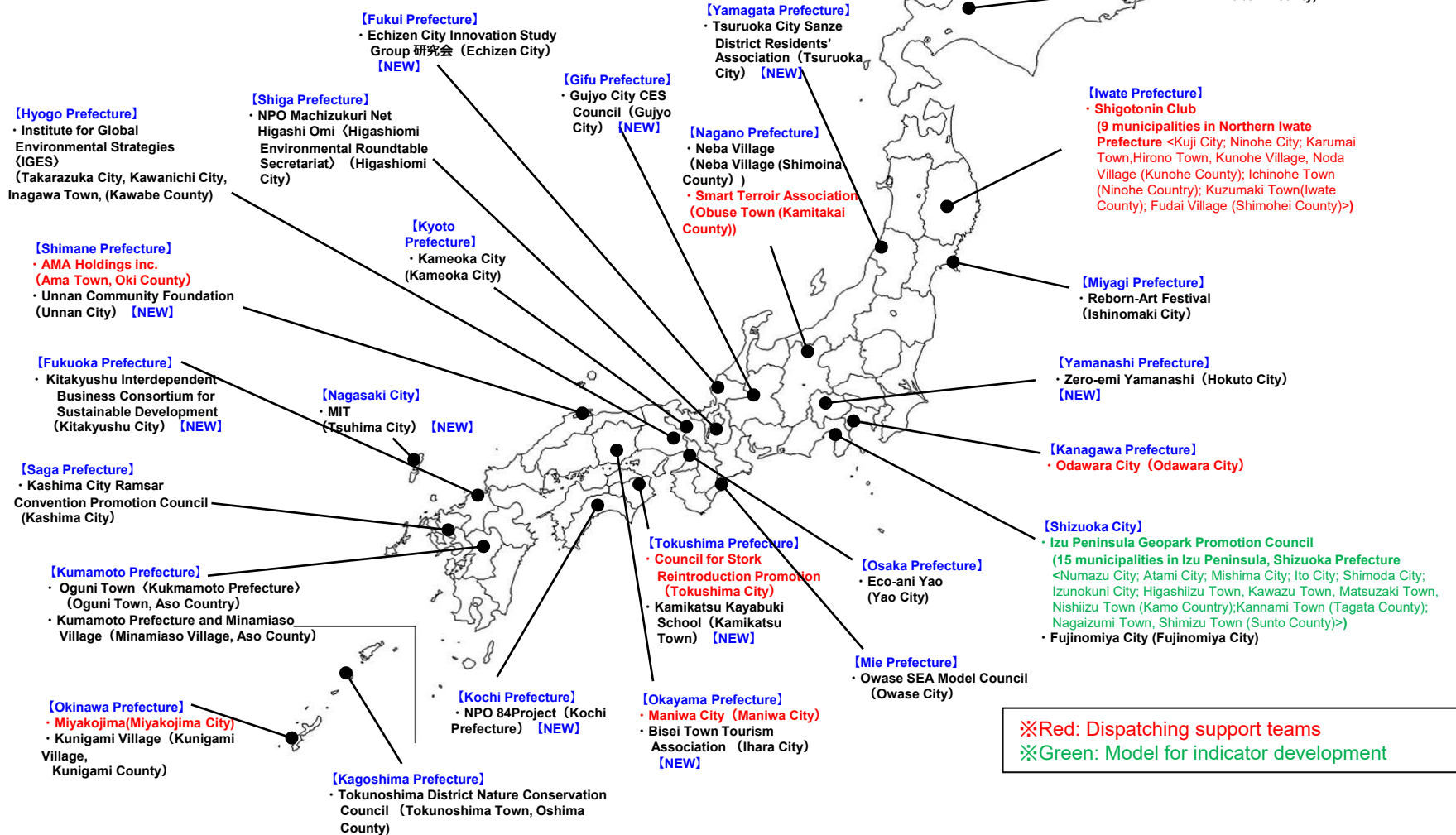
## Community (Village, school district)

- Energy independent block with private distribution line
- ZEB and ZEH
- Renewable energy and energy storage at disaster prevention centers
- Reuse, repair, recycling, etc. in the living sphere
- Biofuel from waste cooking oil
- Utilization of woody biomass of Satoyama



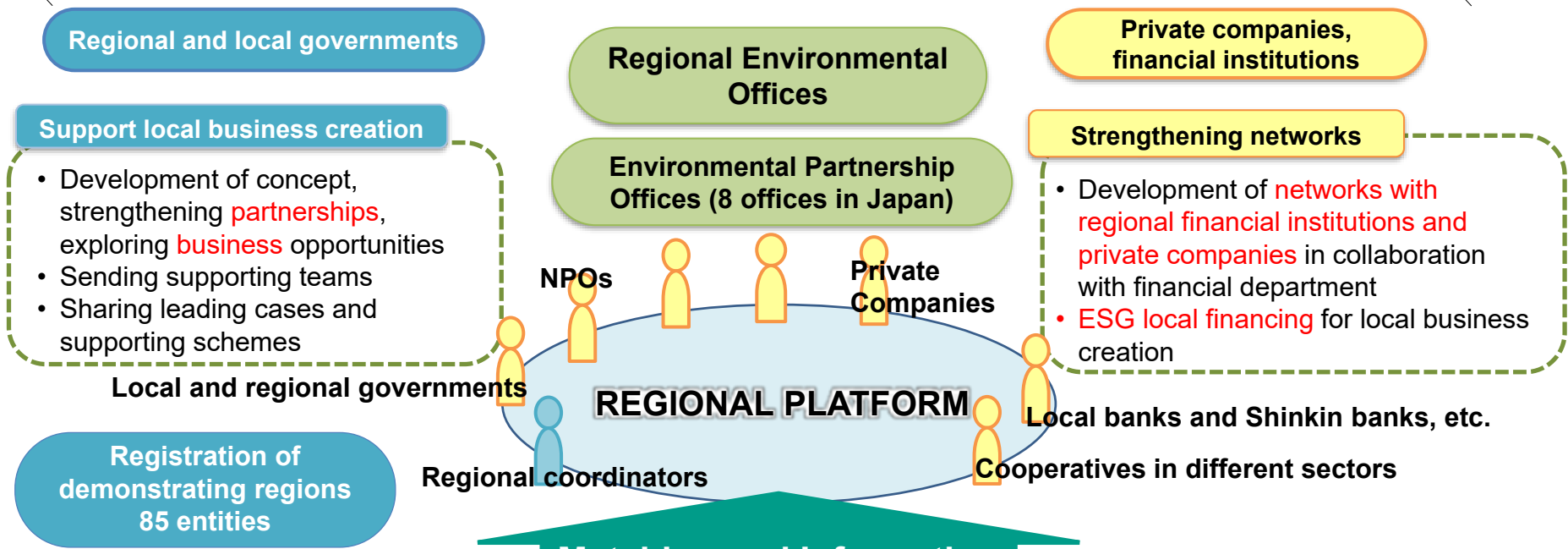
# Entities Working to Create CES under the CES Platform in 2020 (32 entities)

Creating enabling environment (new)	10
Creating enabling environment (on-going)	17
Dispatching support teams (including regions where local indicators are developed)	8



※Red: Dispatching support teams  
※Green: Model for indicator development

# Launching a Platform that Connects People, Goods, Money, and Skills



## Matching and Information

### National Level

<p><b>Ministries</b></p> <ul style="list-style-type: none"> <li>• Introduce supporting schemes available</li> <li>• Share information</li> <li>• Participation in forums and other events</li> </ul>	<p><b>Other networks to support local development, etc.</b></p> <ul style="list-style-type: none"> <li>• Work with other networks having complementary functions</li> <li>• Sharing functions appropriately</li> <li>• Share information networks, co-hosting events, etc.</li> </ul>	<p><b>ESG Finance</b></p> <ul style="list-style-type: none"> <li>• Promotion of ESC financing at local level</li> <li>• Green Fund</li> <li>• The 21st Century Financial Behavior Principles WG on Sustainable Regions</li> </ul>	<p><b>Registration system of companies</b></p> <ul style="list-style-type: none"> <li>• Call for registration of partner companies and other organizations that work together to realize CES</li> <li>• Registration by technology or solution is also possible.</li> <li>• Being a platform for open innovation to solve issues related to ESG and creation of business opportunities</li> </ul>
--	---	---	---



# MOEJ Local SDG Platform