

# Research Institute for Humanity and Nature (RIHN) 総合地球環境学研究所（地球研）

**Prof. Dr. Makoto Taniguchi**  
**Deputy Director-General**

Research Institute for Humanity and Nature (RIHN)

総合地球環境学研究所・副所長  
谷口真人



## 【RIHN vision】

To strive for the achievement of an **equitable, fair and sustainable society** by developing **the relationships between people and nature**, from the community to the global scale.

## 【RIHN mission】

To lead the way in the comprehensive study of the environment, aiming to solve global environmental problems and carry a fundamental and inclusive understanding of the mutual interaction of humans and nature. RIHN is capitalize on **interdisciplinary research** that fuses **humanities, social science and natural science** with **transdisciplinary research** that cooperates and collaborates with society.





### Flow of the RIHN Project Formation

Projects established under the Research Program and Strategic Program will continue to accumulate research while undergoing evaluation both within and outside of the Institute.

IS (Incubation Studies, Research Program only)  
 FS (Feasibility Studies)  
 PR (Pre-Research, Research Program only)  
 FR (Full Research)

Through the above stages, projects will deepen and refine the research content.

#### Project Formation for Research Projects



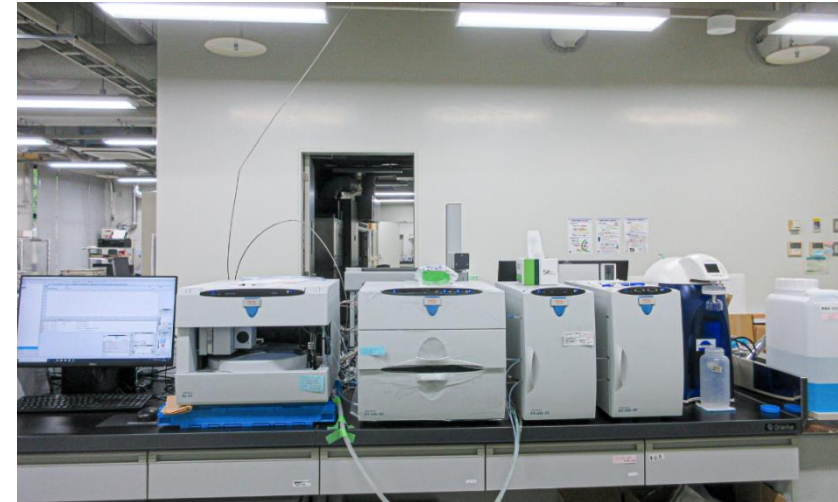
#### Project Formation for Strategic Projects



- RIHN is developing comprehensive research that transcends existing academic fields and disciplines through a “**Program–Project system**” that unites several research projects under a Program.
- The Programs consist of a **Research Program and Strategic Program**, with several research projects under each Program.
- The research projects follows the priority issues set for each Program.
- 39 research projects were completed by the fiscal year 2021, and 8 research projects are currently underway.

# Traceability to clarify the causality in environmental problems

- As an inter-university research institute corporation, RIHN maintains state-of-the-art laboratories with a central emphasis on stable-isotope analysis.
- In 2012, RIHN established the “Environmental Isotope Study” cooperative research program. This program promotes the utility of stable isotope analysis in contemporary environmental studies and enables collaboration with researchers from other universities and research institutes.
- RIHN’s laboratories are widely used by external researchers and students. Thus far, more than one hundred universities and research institutes within and outside of Japan have utilized our up-to-date isotope research facilities.





# RIHN as a research platform for global environment and sustainability research

RIHN is the secretariat for organizations that contribute to solving environmental problems,

➤ “**Future Earth** Japan National Committee (former Future Earth Asian Center)”



➤ TERRA School (Transdisciplinarity for Early career Researchers in Asia)

【Climate Change】

➤ “**University Coalition for Carbon Neutrality**” which includes 196 university/institutes in Japan.



➤ “**The Kyoto Climate Change Adaptation Center**”

【Biodiversity】



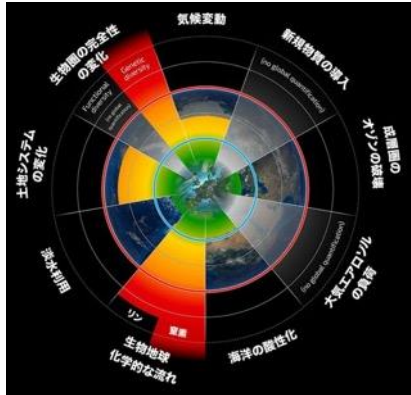
京都気候変動適応センター  
Kyoto Climate Change Adaptation Center

Research on biodiversity including food diversity, language diversity, and culture diversity, as well as various values

# Synergy of research on climate change and biodiversity



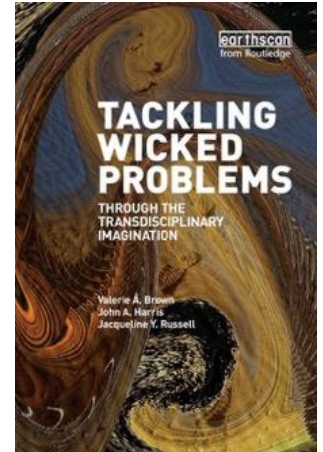
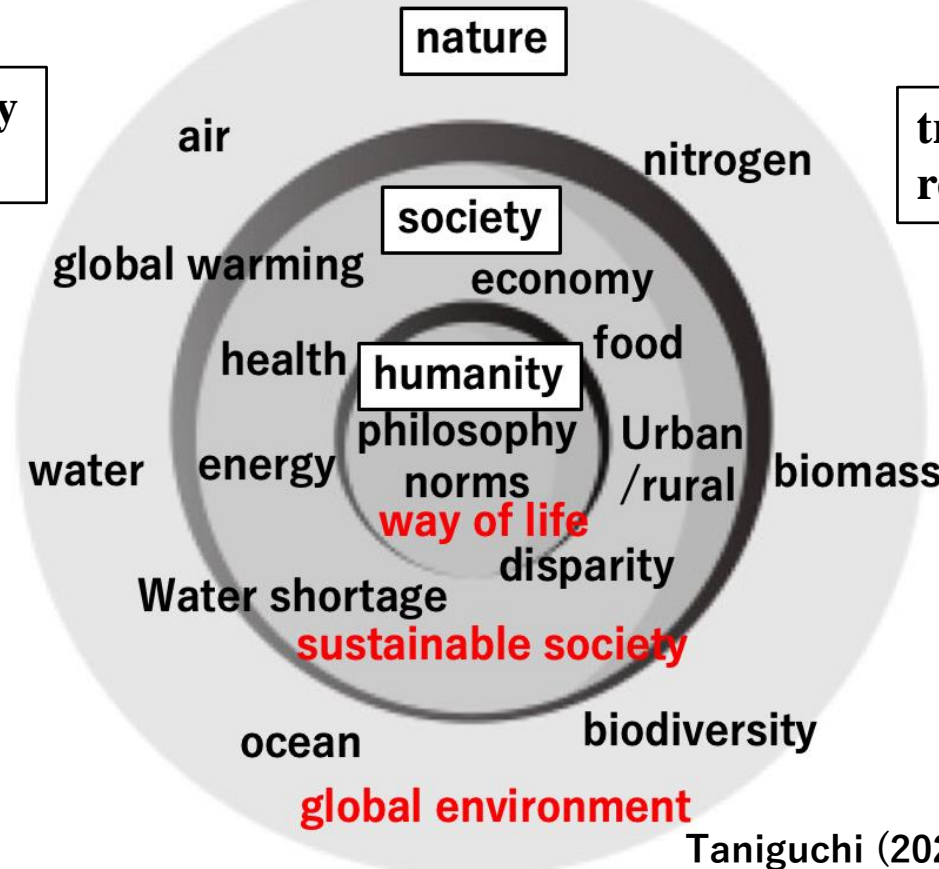
Research Institute for  
**Humanity and Nature**  
大学共同利用機関法人 人間文化研究機構 総合地球環境学研究所



**Planetary Boundary**  
(Rockström et al. 2009)

**interdisciplinary  
research**

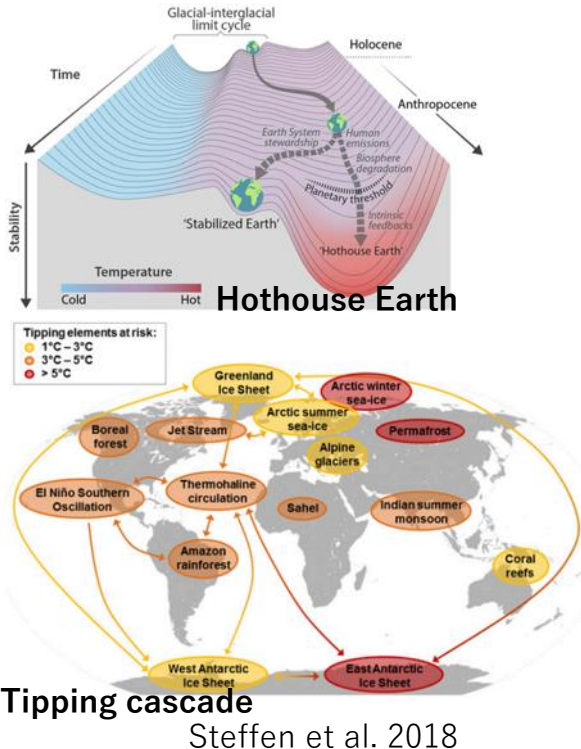
**transdisciplinary  
research**



Brown et al. (2010)



Jiji Press (2022)

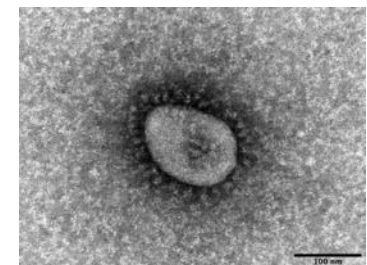


Steffen et al. 2018

**Develop Relationship between People and Nature**

**Sustainable Society**

**Global Environmental Issues**



SARS-CoV-2 Variant of Concern, Lineage B.1.1.529, Omicron