



## **Yokohama City's Actions to Tackle with Climate Change**

Dr. TAKAHASHI Kazuaki (he/him)  
Executive Director for Planning and Coordination Department  
Climate Change Policy Headquarters, City of Yokohama, JAPAN



## 1. Energy Transition under Urban Condition

Decarbonization Leading Area (Minato Mirai 21 district)

Renewable Energy Generation outside the Area

## 2. Demand-side Approach for Attractive Lifestyle under Net-Zero

Difficulty in GHG Reduction at Household Sector

Creating Attractive Lifestyle in an Integrated Way

# Our Challenges for Achieving Net-Zero associated with Electric Consumption by FY2030

明日をひらく都市  
OPEN X PIONEER  
YOKOHAMA

## MM21 District: Leading Business & Tourist district in Japan

About 10% of energy consumption by the business sector in Yokohama comes from the MM21 district, while it accounts for only 0.4% (186 ha) of the whole city area.

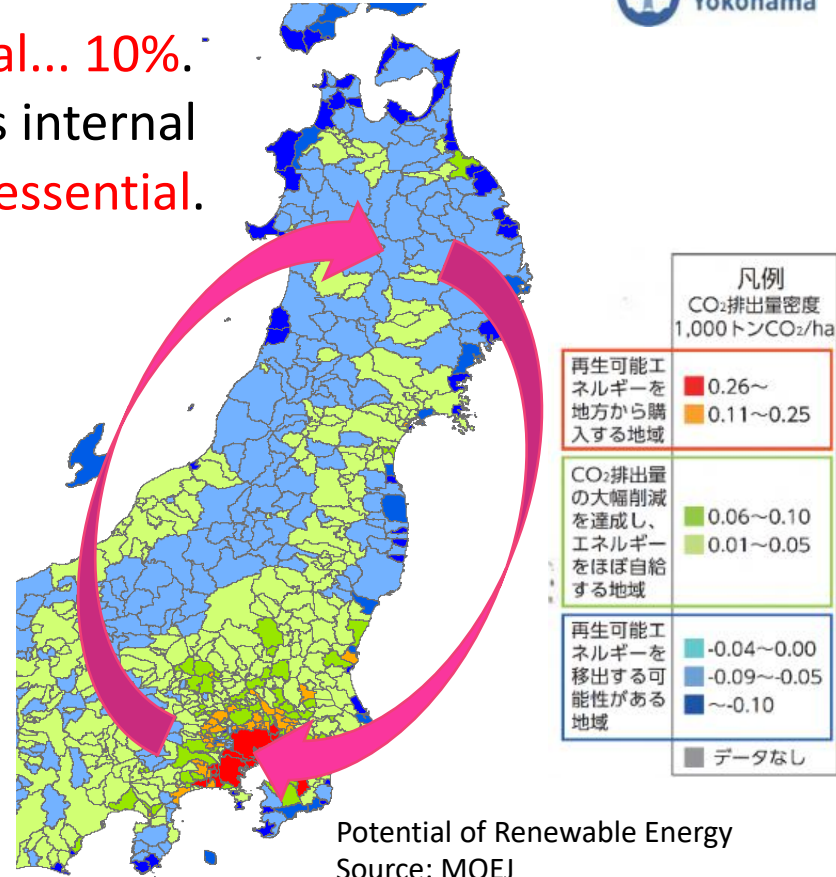
- **Employed population :**  
**130,000** (year 2021)
- **Number of visitors :**  
**66.8 million** (year 2021)
- **CO2 emissions from MM21 :**  
**approx. 290,000 tons** per year



# Yokohama City's Inter-Regional Cooperation Efforts



- Yokohama City's **renewable energy potential... 10%.**  
⇒ At the same time as developing the city's internal power supply, **supply from outside the city is essential.**





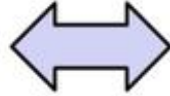
# Yokohama City's Inter-Regional Cooperation Efforts

Renewable Energy in Tohoku

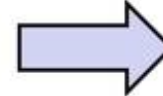


 横浜町	 二戸市
 久慈市	 葛巻町
 菅代村	 八峰町
 野田村	 九戸村
 洋野町	 一戸町
 郡山市	 会津若松市

Collaboration Agreement  
On Renewable Energy

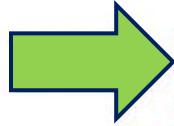


City of Yokohama



Collaboration Agreement  
On Renewable Energy

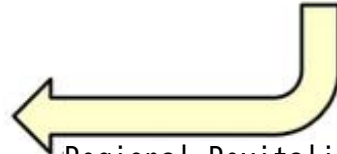
Electricity



Wholesale



Retail



Regional Revitalization Fund



Bid



Businesses

# Yokohama City's Inter-Regional Cooperation Efforts



- Regional Specialty Fair
- Inter-Regional Exchange Between Youths



## 1. Energy Transition under Urban Condition

Decarbonization Leading Area (Minato Mirai 21 district)

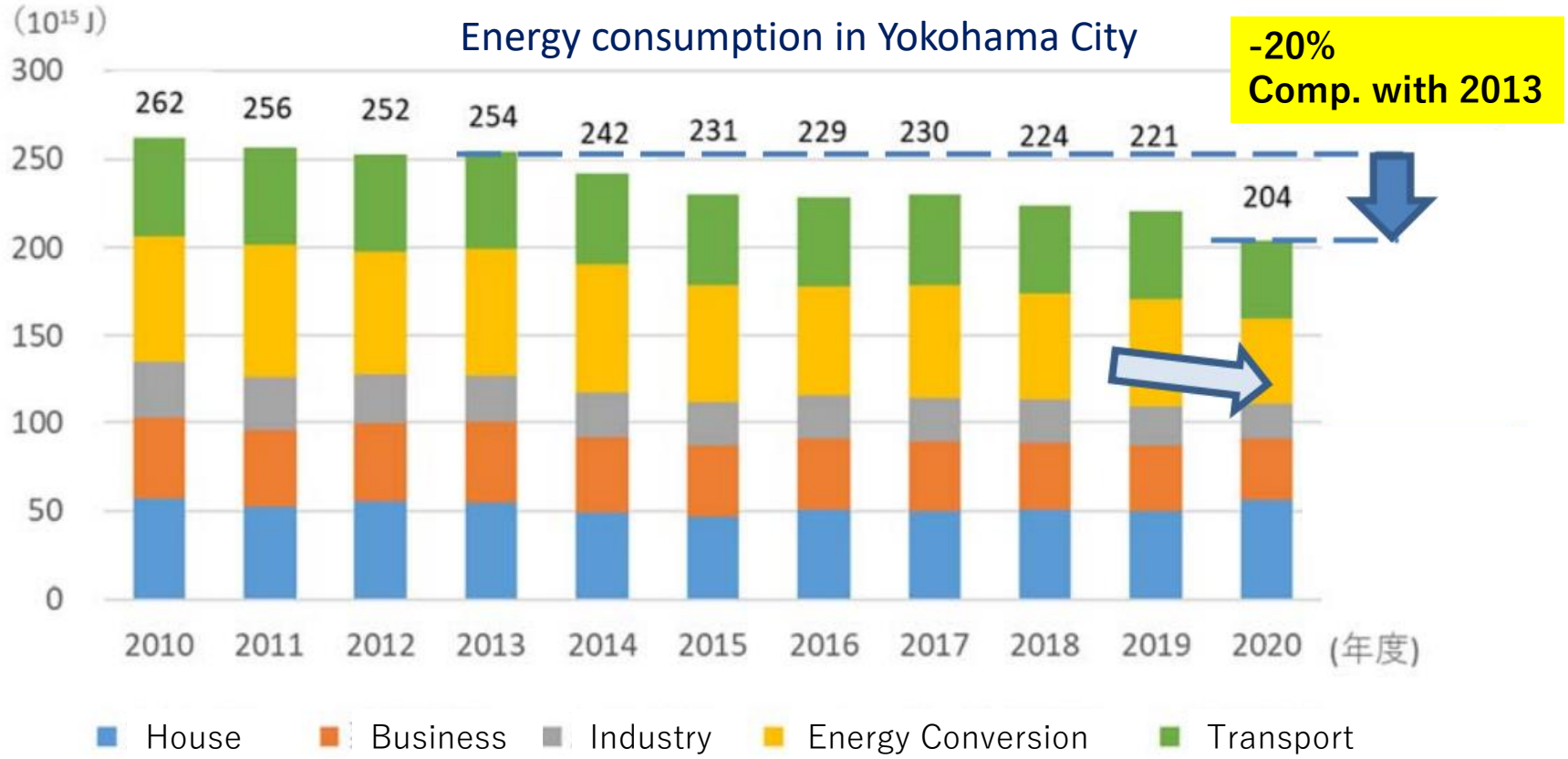
Renewable Energy Generation outside the Area

## 2. Demand-side Approach for Attractive Lifestyle under Net-Zero

Difficulty in GHG Reduction at Household Sector

Creating Attractive Lifestyle in an Integrated Way

# Demand-side Approach for Attractive Lifestyle under Net-Zero Difficulty in GHG Reduction at Household Sector





# Demand-side Approach for Attractive Lifestyle under Net-Zero Difficulty in GHG Reduction at Household Sector

Difficult to understand each effect on climate  
Difficult to contribution on climate change mitigation  
Little attractive for climate change mitigation  
Little idea on climate action for climate change mitigation

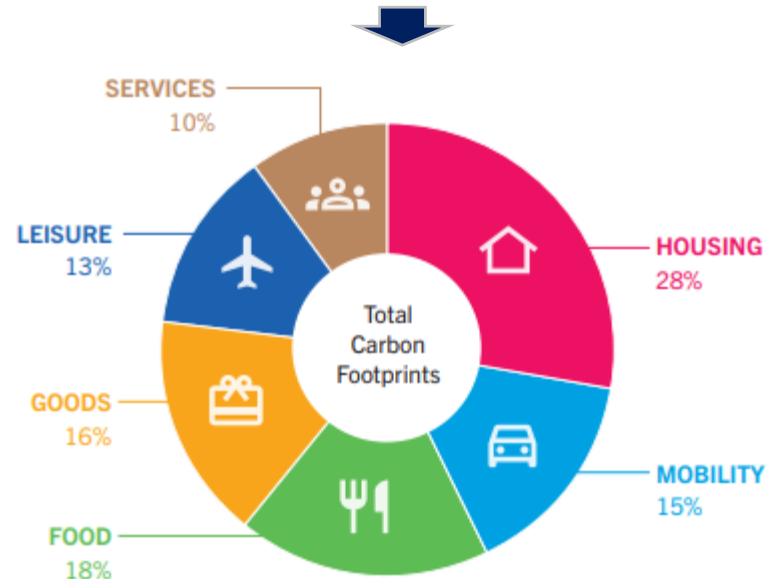



Fig. Distribution of carbon footprint in six domain (Yokohama in 2030 Envisioning 1.5-Degree Lifestyles (IGES, 2021))

Any Idea?

# Demand-side Approach for Attractive Lifestyle under Net-Zero

## Creating Attractive Lifestyle in an Integrated Way

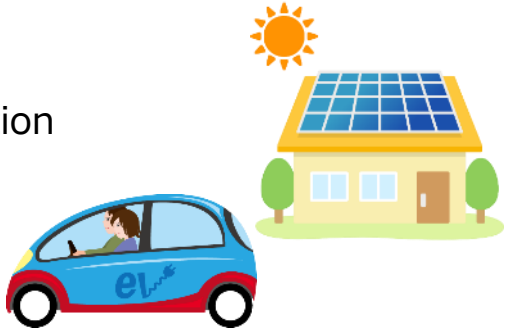
Convenient, Healthy, etc.



Low Cost  
Little Reduction

Sharing economy/  
Local Production and Consumption

Resilient, Thermal Comfort, etc.



High Cost  
High Reduction

PV/EV/VtoH ZEH/ZEB  
Installation

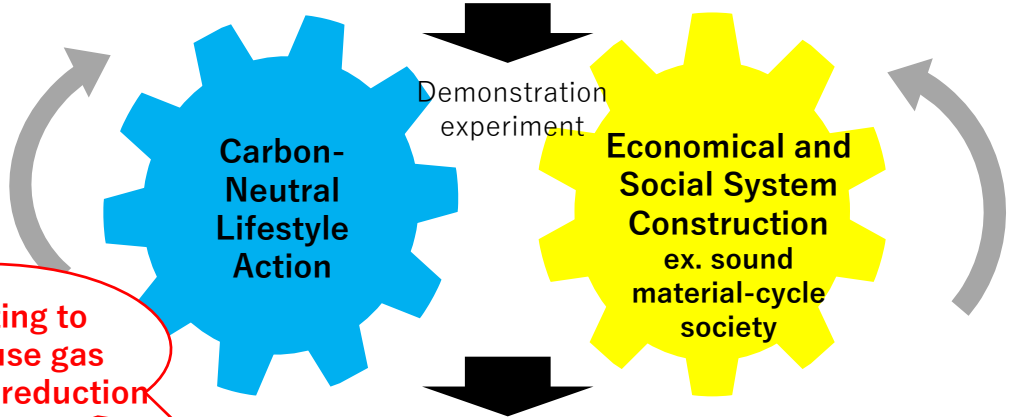


Visualizing Effects of Climate Action  
Providing Information directly  
By digital application

# “Attractive” Lifestyle under Carbon-Neutral Society



## Idea Generation



**Aim to integrate Carbon-Neutral Society, Sound Material-Cycle Society, Society in harmony with Nature And Sustainable Development**

**Contributing to Greenhouse gas emission reduction**

**Innovation of Business/Local Model related to Sustainable and Pioneer Lifestyle**

**Spread of “Attractive” Lifestyle under Carbon-Neutral Society**

# GREEN × EXPO 2027

Botanical Restoration



Renewable Energy



Urban Development



Health & Food



Nature-based Technology



Lifestyle



# Hope to work together to make Carbon Neutrality true!

<http://www.city.yokohama.lg.jp/ondan/>



Zero Carbon  
Yokohama

SUSTAINABLE  
DEVELOPMENT GOALS

世界を変えるための17の目標