

Biodiversity Assessment

Linking Global to Local

ISAP 2024

Plenary 2

National

TERRESTRIAL

22%
of 458
ecosystem types
Threatened

26%
of 458
ecosystem types
Well Protected

25%
of 458
ecosystem types
Not Protected

13%
of 22 667
taxa assessed
Threatened

69%
of 3 050
taxa assessed
Well Protected

9%
of 3 050
taxa assessed
Not Protected



- 1 Habitat loss
- 2 Overutilisation of rangelands
- 3 Altered fire regimes
- 4 Biological invasions
- 5 Climate change

INLAND AQUATIC

222 river ecosystem types
64%
Threatened

135 inland wetland ecosystem types
79%
Threatened

of 501 taxa assessed
68%
Well Protected

13%
Well Protected

6%
Well Protected

of freshwater fishes
18%
Well Protected

42%
Not Protected

61%
Not Protected

of 658 taxa assessed
17%
Threatened



- 1 Changes to the hydrological regime
- 2 Pollution
- 3 Habitat loss
- 4 Biological invasions
- 5 Climate change

ESTUARINE

86%
of 22
ecosystem types
Threatened

18%
of 22
ecosystem types
Well Protected

14%
of 22
ecosystem types
Not Protected

27%
of 66
taxa assessed
Threatened



- 1 Freshwater flow modification
- 2 Overfishing and bait collection
- 3 Pollution
- 4 Habitat loss
- 5 Climate change
- 6 Biological invasions

MARINE

50%
of 150
ecosystem types
Threatened

31%
of 150
ecosystem types
Well Protected

13%
of 150
ecosystem types
Not Protected

18%
of 376
taxa assessed
Threatened



- 1 Fishing
- 2 Ports and harbours
- 3 Freshwater flow modification
- 4 Mining
- 5 Pollution
- 6 Climate change
- 7 Biological invasions

COAST

60%
of 186
ecosystem types
Threatened

24%
of 186
ecosystem types
Well Protected

13%
of 186
ecosystem types
Not Protected



- 1 Fishing
- 2 Habitat loss
- 3 Freshwater flow modification
- 4 Pollution
- 5 Mining
- 6 Biological invasions
- 7 Climate change

SUB-ANTARCTIC

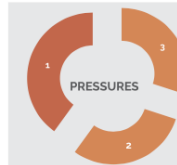
21%
of 29
ecosystem types
Threatened

34%
of 29 marine
ecosystem types
Well Protected

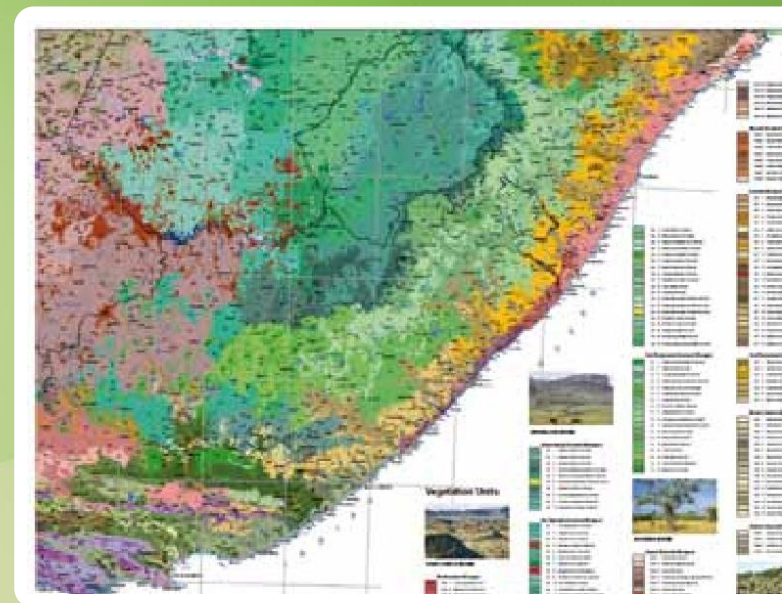
100%
terrestrial
ecosystem types
Well Protected

5
ecosystem types
Not assessed

14%
of 29 marine
ecosystem types
Not Protected

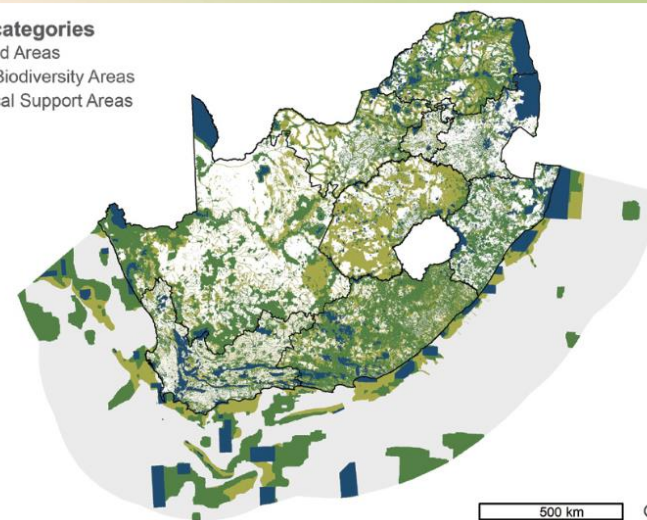


- 1 Invasive house mouse
- 2 Patagonian Toothfish fishery
- 3 Climate change



CBA Map categories

- Protected Areas
- Critical Biodiversity Areas
- Ecological Support Areas





Local

Global

- Busan (2010): “an intergovernmental science-policy platform for biodiversity and ecosystem services should be established to strengthen the science-policy interface for biodiversity and ecosystem services...”
- Panama City (2012) resolution adopted to form IPBES
- Objective 1: assessing knowledge

